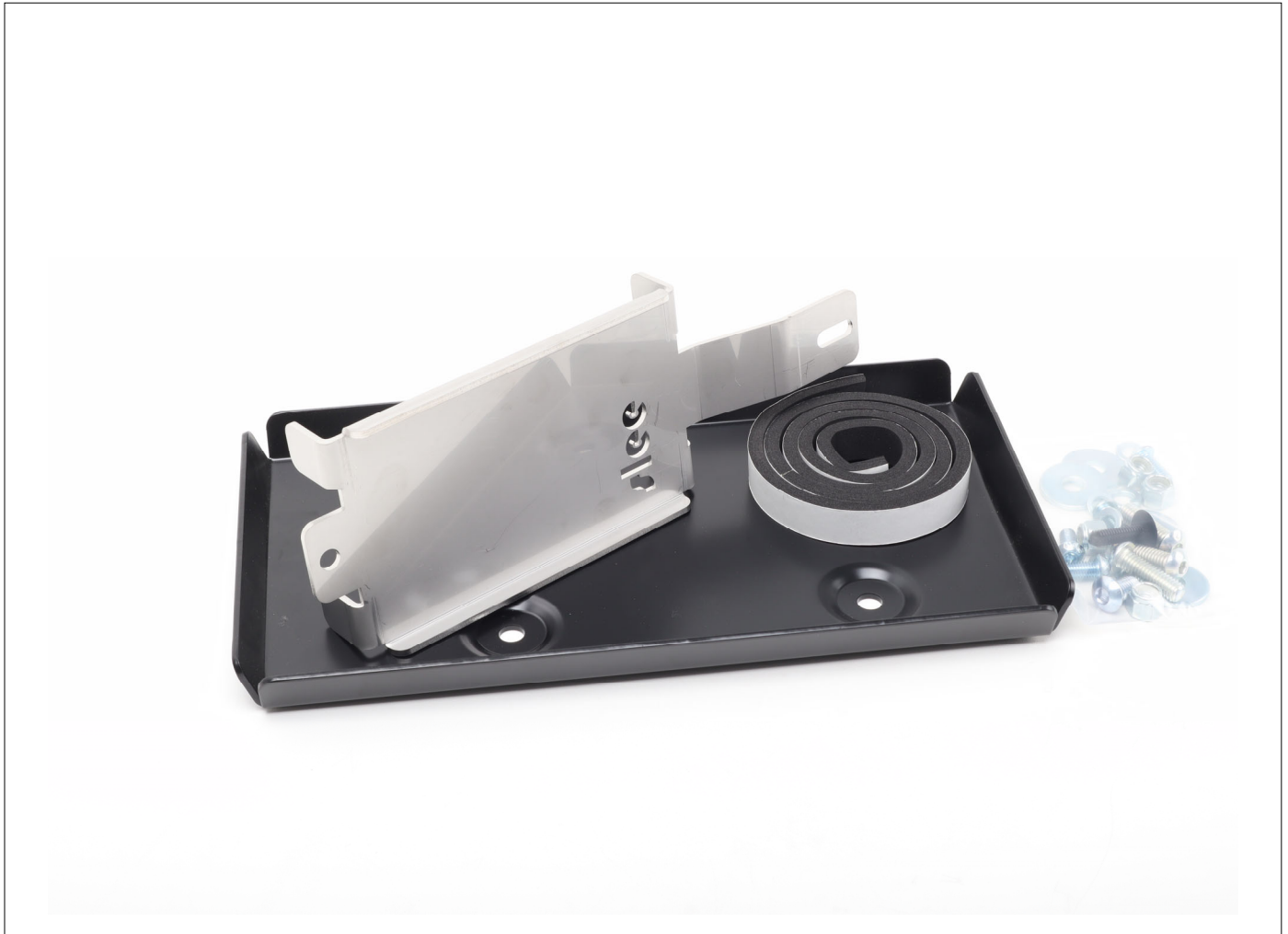




700 Pine Ridge Road Golden CO 80403 Tel (303) 278 8287 1(888) 4X4 SLEE Fax (303) 278 7182

Slee Off-Road – [200 Series Primary Battery Tray] (SOK0017) – Installation instruction 1



Thank you for your purchase from Slee Off-Road! If you should you have any questions or concerns, please do not hesitate to contact us immediately at 1 888 4X4 SLEE or at sales@sleeoffroad.com.

Slee Off-Road strives to provide comprehensive installation instructions. However, in some circumstances minor inconsistencies may be encountered with instructions and or provided parts. If you encounter such an inconsistency, please notify us, as your input is important.

Slee Off-Road guarantees all parts free from defects for one year from the original purchase date. Slee Off-Road and Slee & Co under no circumstances will be held liable for any damages or injuries to the users of this product(s) and or their equipment as a result of the use of this information or parts obtained from Slee Off Road.

Slee Off-Road – [200 Series Primary Battery Tray] (SOK0017) – Installation instruction 2

QTY	Parts Included
1	Battery tray
1	Battery tie down bracket
3	3/8" x 1-1/4" Button head bolt
3	3/8" Nylock nut
3	3/8" Thick washer
1	40" foam strip, adhesive backed

Tools Required
Metric Tools
SAE Tools
Drill
Stepped drill bit (unibit)
Center punch or similar

NOTE: The Slee SOK0017 Primary Battery Tray is compatible with Group 31P batteries, such as the Interstate 31P-MHD, 31P-AGM7 or Odessey ODX-AGM31A or equivalent.

The kit requires extended battery terminals, such as the Slee SOK20002 Billet Terminal set.

1 Organize the work area and verify all parts to the SOK0017 kit are present. Disconnect the battery before performing any other steps.



Disconnect the battery. (Step 1)

2 Remove the battery and retain the J-bolt and nuts for re-use.



Remove the J-bolt and keep for reuse. (Step 2)

3 Place the Slee battery tray in place to mark one hole for drilling.

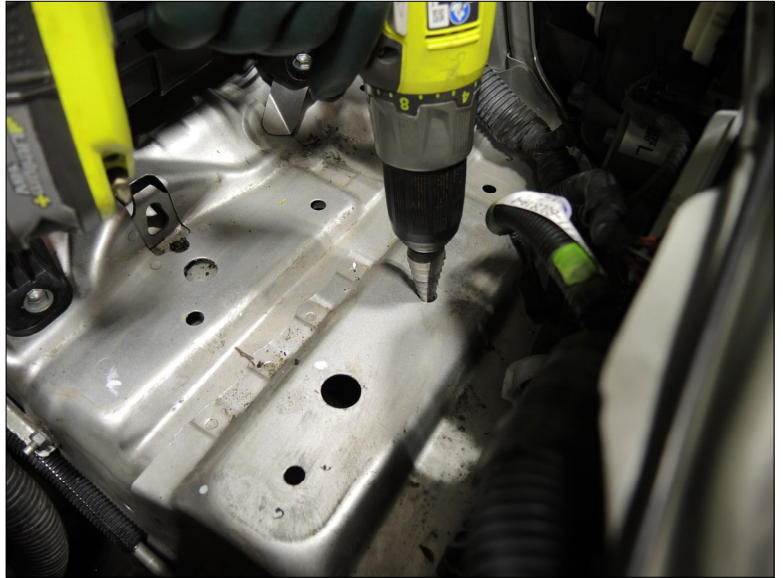
Hint: Use a centerpunch for accurate hole placement.



Mark the inner fender for drilling. (Step 3)

4 Remove the tray and drill the hole for the additional fastener.

Hint: The hardware used is 3/8", drilling slightly oversized can help with fitment or misalignment if the hole is not perfectly centered.



Drill a hole for the 3/8" fastener. (Step 4)

5 Obtain access to the underside of the battery tray by removing the fender skirt. Remove the torx screws and hardware at the driver front lower portion of the bumper. Keep the hardware for re-install later.



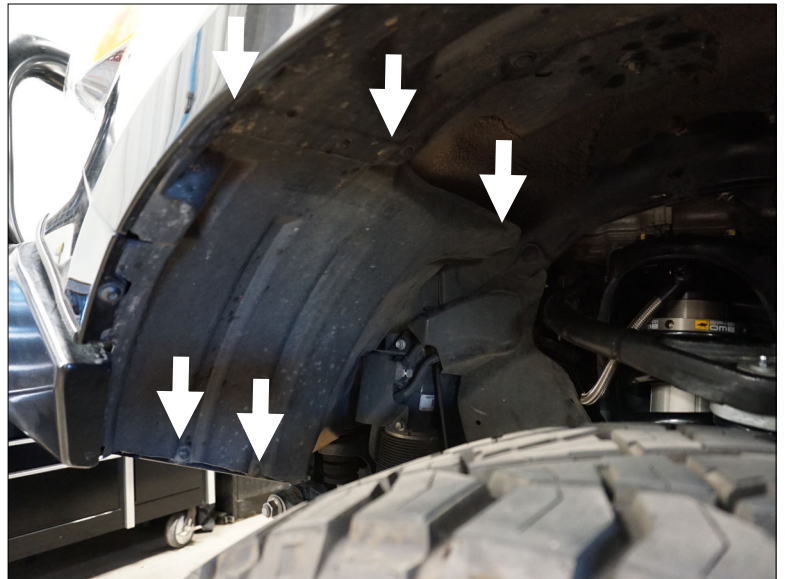
Remove the torx fasteners on the fender skirt. (Step 5)



Remove the hardware on the fender skirt. (Step 5)

6 Remove the front fender liner by pulling the indicated push rivets and bolts. Set the liner aside.

All but one of the plastic push rivets will be reused.



Remove the front fender liner. (Step 6)

7 Install the battery tray by bolting it into place. Access the nuts on the inside of the fender.

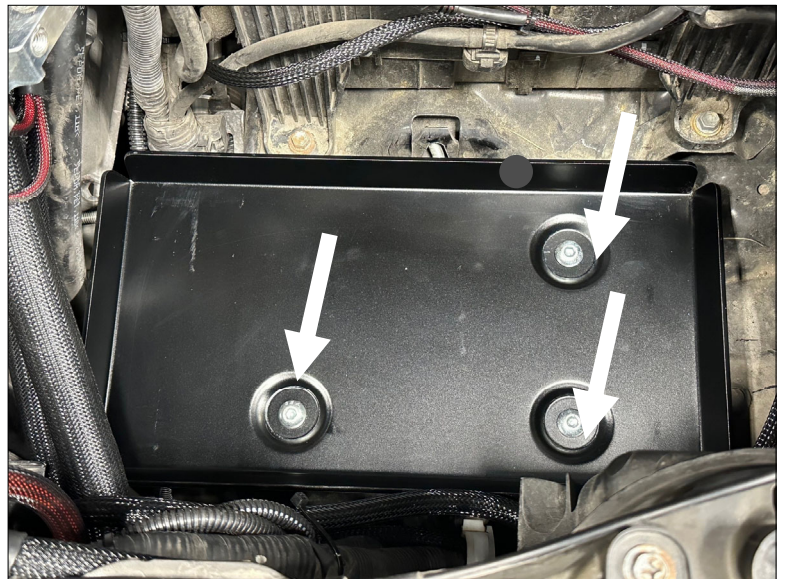
Note: Trays may have 4 holes, however only the (3) indicated are used.

Hardware:

(3) 3/8" x 1-1/4" button head bolt

(3) 3/8" nylock nuts

(3) 3/8" thick washer



Install the battery tray with hardware as shown. (Step 7)

8 Reinstall the front fender liner using the existing hardware and using the new push-rivet as shown.

Hardware:

(1) plastic push-rivet

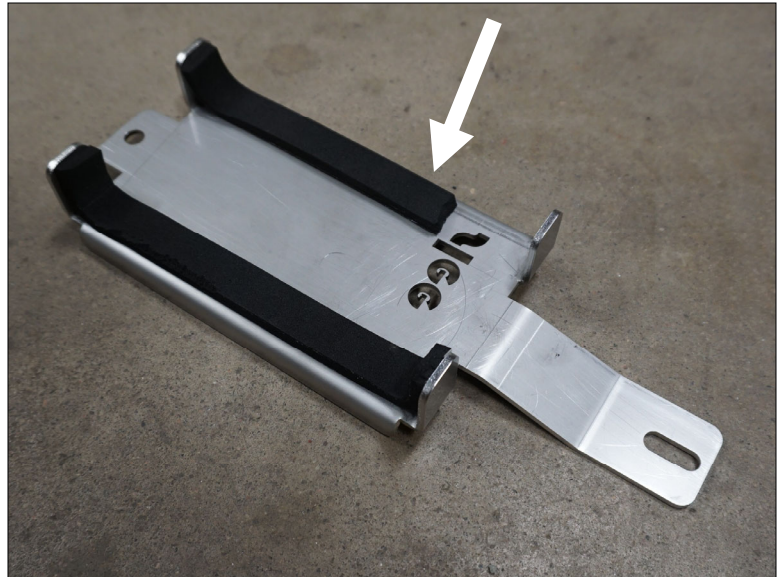


Use the new plastic push-rivet in this location. (Step 8)

9 Test fit the battery. If needed, line the tray and hold down with the included foam strip. If not needed, install the battery.

Hardware:

(1) 40" foam strip



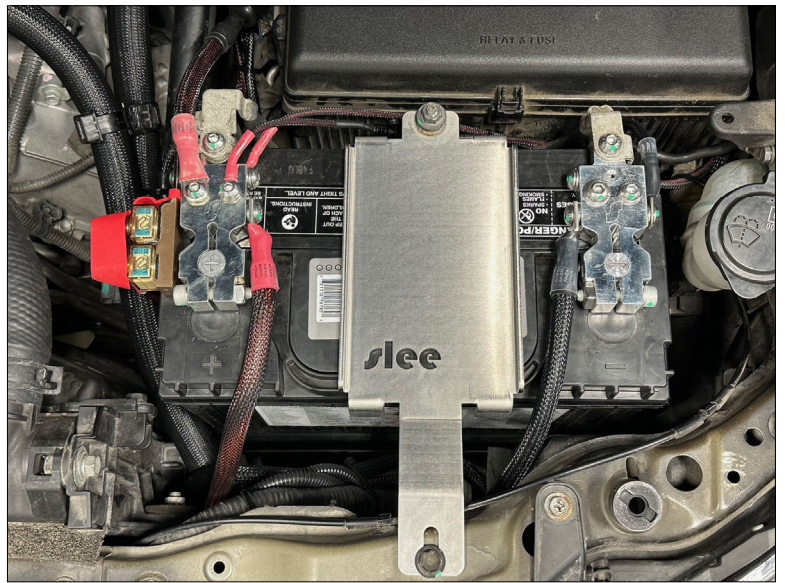
Install the foam onto the battery tiedown. (Step 9)

10 If fitting the optional battery terminals, do so at this point. Follow the instructions provided with the terminals.

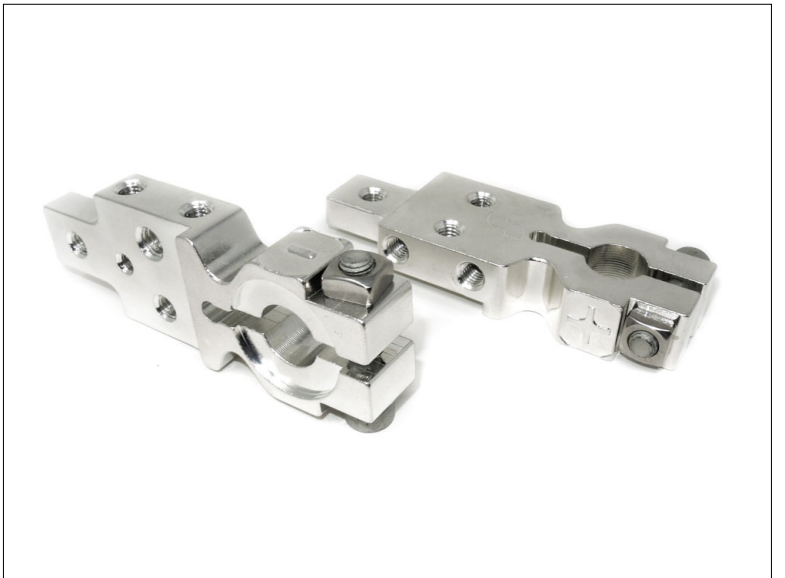
Hint: Be aware that handling battery components such as terminals exposes you to lead. Wash hands thoroughly after handling.

11 Verify all hardware is tight and installed. Verify the battery is secured in place. Re-connect the power to the battery. Extended battery terminals are required. The SOK20002 Billet Terminals are designed for this application.

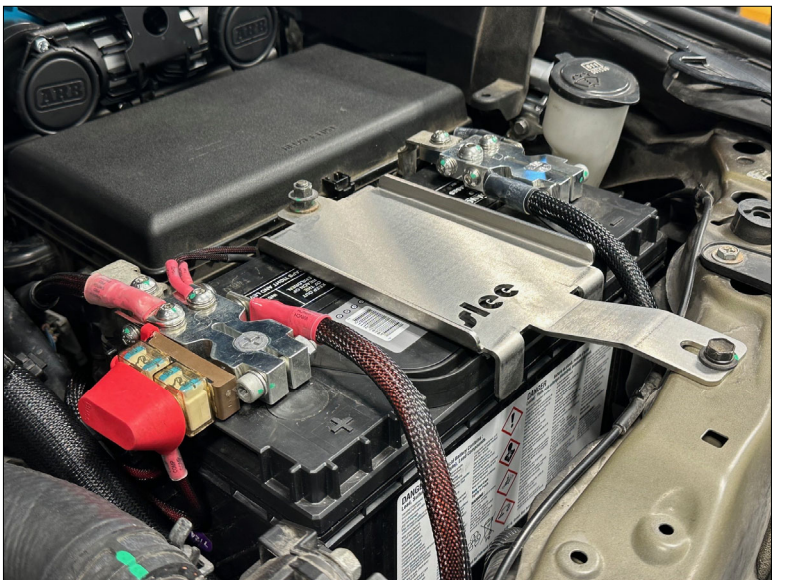
This completes the installation of the Slee 200 series primary battery tray.



Reinstall the battery. (Step 9)



Install the optional battery terminals. (Step 10)



Billet Terminals Installed and wiring connected (Step 11)