



700 Pine Ridge Road Golden CO 80403 Tel (303) 278 8287 1(888) 4X4 SLEE Fax (303) 278 7182

**Slee Off-Road – 2005-15 Tacoma Rear Bumper with Tire Carrier (SOK014) - Installation Instructions**

<b>Qty</b>	<b>Part Description</b>	<b>Tools Required / Other</b>
1	<b><i>Slee Tacoma Rear Bumper with Spindle</i></b>	Basic Metric & Standard Tools / Sockets
2	Slee Bumper Wing Caps (driver & passenger)	Pneumatic Impact
6	10-32 Nylock Flange Nuts (Wing Caps)	Thread Taps or Chase
2	Frame Brackets (Passenger and Driver)	Painters Tape
2	1/2" x 1 3/4" Bolt - Grade 8 (driver wing support)	Wheel Bearing Grease (Tire Carrier)
4	1/2" USS Washer - Grade 8	1/8" Drill Bit (pre-drill) Step 18C
2	1/2" Lock Washer - Grade 8	
2	1/2" Nut - Grade 8	
8	1/2" x 2" Bolt - Grade 8 (driver and passenger frame brackets / receiver)	
16	1/2" USS Washer - Grade 8	
8	1/2" Lock Washer - Grade 8	
8	1/2" Nut - Grade 8	
4	1/4"-20 Phillip Screws (License Plate)	
2	1/4"-20 Black Oxide Button Head Allen (7-Pin Round)	
2	1/4"-20 Nylock Flange Nut (7-Pin Round)	
2	LED Light Cover Plate	
8	1/4"-20 Black Oxide Button Head Allen	
1	License Plate LED Light (with two flange head nuts)	
2	Butt Connectors with Glue (heat to create seal)	
1	<b><i>Slee Tire Carrier</i></b> * (Pin assembly, grease zerker and two shock mounting studs with ball are pre-installed for your convenience)	
1	Slee Aluminum Hard Anodized Latch with Catch	
8	5/16" x 1" SS - Low Socket Cap Screw (Latch & Catch)	
1	Shock - Tire Carrier	
1	Tire Carrier Bracket	
1	Tire Carrier Mount with three studs	
3	Lug Nut	
9	3/8" Bolt - Grade 5	

**Slee Off-Road – 2005-15 Tacoma Rear Bumper with Tire Carrier (SOK014) - Installation**  
 Instructions - 2 of 18

12	3/8" Washer - Grade 5	
6	3/8" Large Thick Washer	
9	3/8" Nylock	
1	Slee Aluminum Latch with catch (pre-assembled)	
1	Nylon Pad Bracket	
1	Nylon Pad (with hole for pin)	
1	Hard Rubber Rectangular Pad	
2	10-32 SS Button Head Screw (for Rubber Rectangular Pad)	
2	10-32 Nylock Nut (for plastic pad)	
2	3/8" x 1" SS Countersink Screws	
2	3/8" Nylock Nut	
1	Spindle Cap - Slee Logo (includes seal)	
2	Wheel Bearings	
1	Hub Seal	
1	Large Thick Spindle Washer	
1	Spindle Castle Nut	
1	Spindle Cotter Pin	
1	Rubber Bump Stop - 5/16" thread	
1	5/16" x 3/4" Bolt - Grade 5	
1	5/16" Lock Washer - Grade 5	
1	5/16" Washer - Grade 5	
2	10-16 x 3/4" Hex Self-Drilling Screw (for wire clips)	
2	Aluminum Wire Clips	
1	Camera Bracket (uses 3/8" hardware)	
1	Rubber Plug - Black (carrier arm)	
	<b><i>Rotopax Mounting System</i></b>	
2	Slee Rotopax Mounting Plates	
2	1/2" x 1 3/4" Allen Bolts	
1	Allen Key	
4	1/2" SAE Washer	
2	1/2" Lock Washer	
2	1/2" x 1 3/4" Barrel Nut	
2	1/2" x 1 1/4" Bolt	
	<b><i>Hi-Lift Bracket</i></b>	
1	Slee Hi-Lift Bracket with two 3/8" mounting stud	
1	Hard Rubber Rectangular Pad	
2	10-32 SS Button Head Screw (for Rubber Rectangular Pad)	
2	Slee Hi-Lift Clamps	
3	3/8" Bolt	
8	3/8" Washer	
3	3/8" Nylock Nut	
2	3/8" Barrel But (Hi-Lift Clamp)	
2	3/8" Lock Washer (Hi-Lift Clamp)	

Thank you for your purchase from Slee Off-Road! If you should you have any questions or concerns, please do not hesitate to contact us immediately at 1-888-4X4-SLEE or at [info@sleeoffroad.com](mailto:info@sleeoffroad.com).

Slee Off-Road strives to provide comprehensive installation instructions. However, in some circumstances minor inconsistencies may be encountered with instructions and or provided parts. If you encounter such an inconsistency, please notify us, as your input is important. Slee Off-Road guarantees all parts free from defects for one year from the original purchase date.

Slee Off-Road and Slee & Co under no circumstances will be held liable for any damages or injuries to the users of this product(s) and or their equipment as a result of the use of this information or parts obtained from Slee Off-Road.

1. Get organized and verify all parts are present.

Remove License Plate.

Disconnect harness from two connectors (Step 1A), twist out license plate lights and remove harness along with 7-Pin round trailer connector.

**Compatibility;** bumper must be installed with OE rated receiver.



Disconnect and remove harness (step 1A)

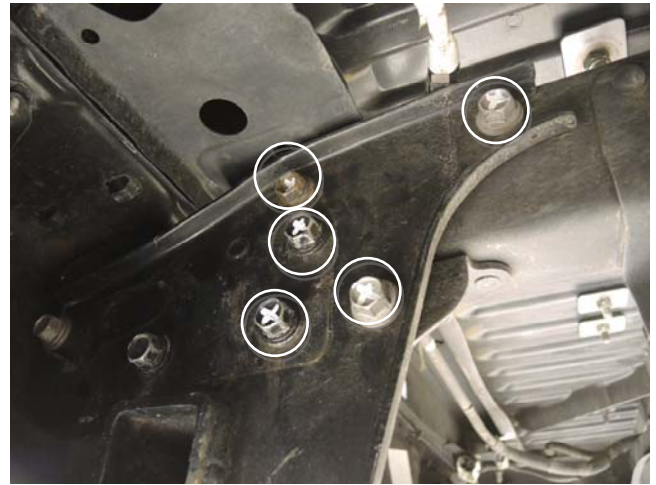


Harness removed (step 1B)

2. Remove five bolts driver and passenger side as indicated (Step 2A).  
Remove rear bumper (two people are recommended). Lift entire bumper along with receiver up and over locating tabs (Step 2B & 2C).

Separate the rear bumper and receiver (Step 2D).

**Hint;** apply blue painters to vehicles painted surfaces on driver and passenger sides. This can be removed after Slee bumper has been installed to avoid any potential damage(s).



Remove five bolts driver and passenger side (step 2A)



Locating tab (step 2B)



Locating tab frame side shown (step 2C)



Separate receiver from bumper (step 2D)

3. Prep Slee Rear Bumper for installation.  
Install LED license plate light.

**Hardware;**

1 x License Plate LED Light (with two flange head nuts)



Install LED license light (step 3A)



Install LED license light (step 3B)



4. Install Bumper Wing Caps.

**Hardware;**

- 2 x Slee Bumper Wing Caps
- 6 x 10-32 Nylock Flange Nut



Install Bumper Wing Caps (step 4)

5. Install Nylon Pad, Plastic Pad and Bracket with hardware.

**Hardware;**

- 1 x Plastic Pad
- 1 x Nylon Pad (with hole for pin)
- 1 x Nylon Pad Bracket
- 2 x 3/8" x 1" SS Countersink Screws
- 2 x 3/8" Nylock Nut
- 2 x 10-32 Button Head Screws
- 2 x 10-32 Nylock Nut



Assemble and install Nylon Pad with Bracket (step 5)

6. Install receiver using OE bolts removed in Step 2. Do not tighten hardware.

Install Driver and Passenger Frame Brackets with bolts removed in Step 2. Do not tighten hardware.

Install Bumper channel to frame brackets. Do not tighten hardware.

**Note;** bolts circled in photo are OE bolts

**Hardware;**

- 2 x Frame Brackets
- 6 x 1/2" x 2" Bolt
- 16 x 1/2" Washer



Driver side Frame Bracket detail (step 6A)

**Slee Off-Road – 2005-15 Tacoma Rear Bumper with Tire Carrier (SOK014) - Installation**  
Instructions - 7 of 18

8 x 1/2" Lock Washer  
8 x 1/2" Nuts  
2 x 1/2" x 1 3/4" Bolt (*Step 6C*)

*Receiver mounting (Step 6D);*  
2 x 1/2" x 2" Bolt  
4 x 1/2" USS Washer - Grade 8  
2 x 1/2" Lock Washer - Grade 8  
2 x 1/2" Nut - Grade 8



Passenger side Frame Bracket detail (**step 6B**)



Passenger side support for wing detail (**step 6C**)



Receiver installed with bumper detail (**step 6D**)

7. Verify fitment; bumper wing to body / taillight tolerances. Once proper tolerances are achieved tighten all hardware.



Verify bumper to body line (step 7)

8. Install OE 7-Pin Trailer Connector. Connector is mounted from the "inside" of the Slee Bumper.

**Hardware;**

- 2 x 1/4"-20 Black Oxide Button Head Allen
- 2 x 1/4"-20 Nylock Flange Nut



Install 7-Pin Round (step 8)

9. Connect LED license plate light to OE wiring. Verify operation.

**Hardware;**

- 2 x Butt Connectors with glue (heat to create seal) once crimped

**Hint;**

- Connect Green (vehicle side) to Brown (LED light side) - *Running Light 12v+*
- Connect White with Black trace (vehicle side) to White (LED light side) - *Ground*



10. Install LED light covers unless installing LED lights.

\* *LED Lights sold separately.*

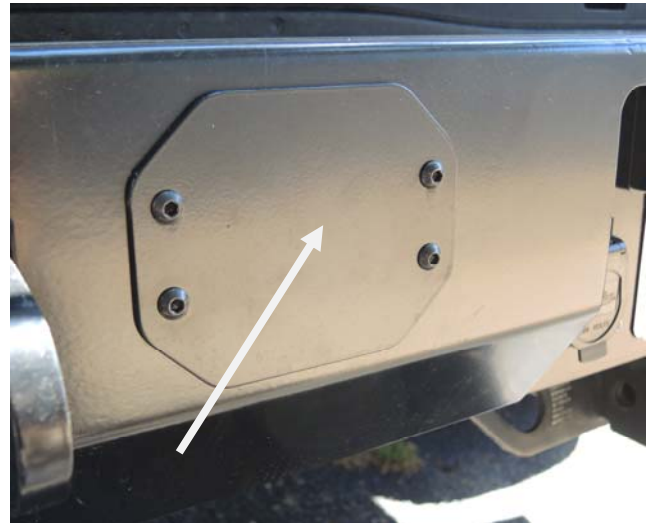
**Hardware;**

8 x 1/4-20 x 3/4" Black Oxide Button Head Allen

**Hint;**

12v+ reverse trigger underneath taillight in split loom (Step 9B).

- Reverse 12V+ - Red (vehicle side)
- Ground - White with Black Trace (vehicle side)



LED Light Location / covers installed (step 10A)



LED Light reverse trigger location (step 10B)

11. Re-connect harnesses unplugged in Step 1.  
Verify clips are fully engaged on plugs.

12. Install License plate.

**Hardware;**

4 x 1/4"-20 Phillip Screws



Optional LED Lights installed (step 12)

13. Prepare Tire carrier for installation on spindle.

- Verify power coat is clear of hub seal area and carefully sand if necessary. Grease bearing; install bearing and Hub Seal by gently tapping Seal into place. Excessive force will damage Hub Seal (Step 13A)
- Install Rubber Bump Stop on carrier (Step 13B)

**Hardware;**

1 x Slee Tire Carrier

1 x Wheel Bearing

1 x Hub Seal

1 x Rubber Bump Stop - 5/16" thread

1 x 5/16" Bolt - Grade 5

1 x 5/16" Lock Washer - Grade 5

1 x 5/16" Washer - Grade 5



Install hub seal (step 13A)



Install Rubber Bump Stop (step 13B)

14. The Slee Latch is pre-assembled. Mount to Tire Carrier Arm.

Install Tire Carrier to Spindle. Carefully slide Carrier Hub over spindle without damaging Hub Seal installed in pervious Step. Install greased bearing, washer, castle nut and set proper bearing preload. Install cotter pin as shown in Step 14B.

Install Slee Aluminum threaded spindle cap with seal and pump a small amount of grease into hub through the pre-installed grease zerk.

**Hardware;**

- 1 x Slee Aluminum Hard Anodized Latch with Catch
- 8 x Low Socket Cap Screws
- 1 x Wheel Bearing
- 1 x Large Thick Spindle Washer
- 1 x Spindle Castle Nut
- 1 x Spindle Cotter Pin
- 1 x Spindle Cap w/ seal - Slee Logo



Pre-assembled Slee latch (step 14A)



Install Carrier on Spindle (step 14B)



Install Carrier on Spindle (step 14C)



15. Install Tire Carrier shock (shock studs with ball are pre-assembled for your convenience). Completely remove the retaining clips to allow the shock end of the "socket" engage over the ball. Replace clip and ensure the shock ends are fully engaged over the ball properly.

**Operation;** red tab locks arm into place once carrier is opened and must be "pressed" to close carrier arm.

**Hardware;**

1 x Shock - Tire Carrier



Install Carrier shock (step 15)

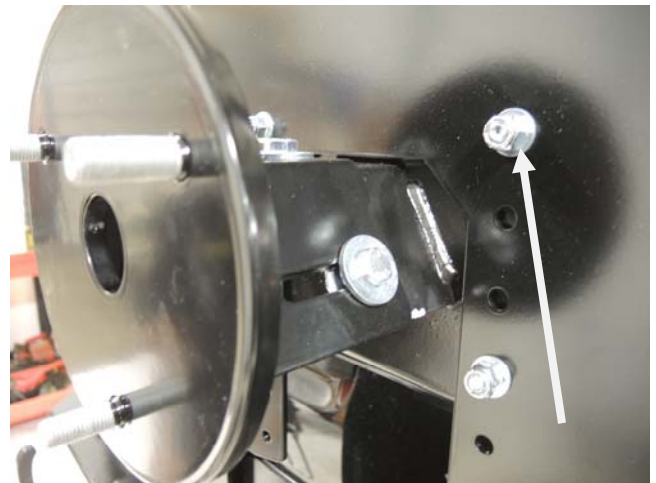
16. Install Tire Carrier Bracket to Swing arm tighten hardware.

Relative to wheel backspacing and tire size install the Tire Mount with Studs to bracket and test fit with wheel / tire. Achieving the appropriate amount 'preload' between the tire and the carrier will eliminate rattles (Step 16B). Tighten all hardware.

**Hardware;**

1 x Tire Carrier Bracket  
4 x 3/8" Bolt  
4 x 3/8" Nylock  
8 x 3/8" Washer

1 x Tire Carrier Mount with Studs  
3 x 3/8" Bolt  
3 x 3/8" Nylock  
6 x 3/8" Large Thick Washer  
3 x Lug Nut



Install Tire Bracket (step 16)



Adjust tire mount to set proper preload (step 16B)

17. If equipped with OE back up camera and relocation is desired proceed with Step 17.  
*Otherwise advance to Step 19.*

Remove Torx screws from tailgate cover, remove cover and unbolt backup camera held in with two M6 bolts. Remove two Phillip screws and separate backup Camera from bracket. Remove harness and retain all parts.

Re-install bracket and tailgate cover.



Remove tail gate cover (step 17)



Remove Camera (step 17B)



Remove Camera from bracket (step 17C)





Remove harness (step 17B)

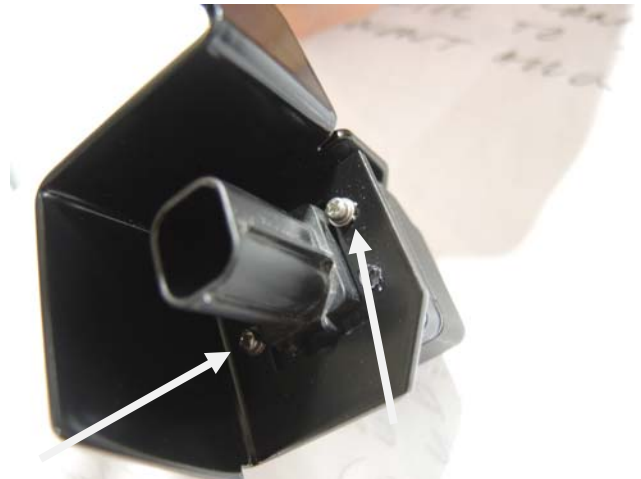
18. Install Camera with OE screws to Slee Camera Bracket.

**Hint;** in some cases powder coat may be build up in small holes - drill if necessary.

Mount Camera Bracket to Slee Carrier. Plug in Camera Harness and route along the inside of carrier arm and through the opening at the Bumper Hub and clip in plug. Using self-taping screw and clip secure to the swing arm. Verify functionality.

**Hardware;**

- 1 x Slee Camera Bracket
- 2 x 3/8" Bolt
- 4 x 3/8" Washer
- 2 x 3/8" Nylock
- 2 x Aluminum Wire Clips
- 2 x 10-16 x 3/4" Hex Self-Drilling Screw



Install Camera to Slee Bracket (step 18A)



Install Camera to Slee Bracket (step 18B)

Slee Off-Road – 2005-15 Tacoma Rear Bumper with Tire Carrier (SOK014) - Installation  
Instructions - 15 of 18



Secure camera harness with supplied clip and screw (**step 18C**)

19. Install plug in Tire Carrier arm.

**Hardware;**  
1 x Rubber Plug - Black

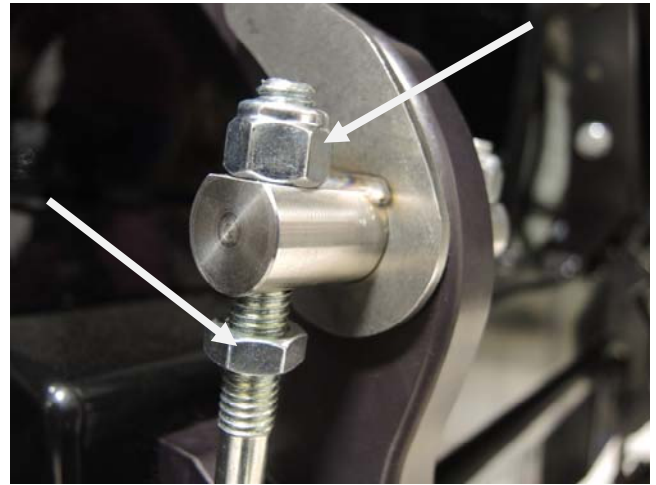


Install plug (**step 19**)

20. Verify final operation of Tire Carrier by opening and closing several times. Adjust latch as necessary (See Photo) to create the proper amount of preload to latch catch. Once proper adjustment has been achieved tighten nuts to secure adjustment.

**Important;** additional adjustment available within the Slee Aluminum Hard Anodized Latch. See attached document at the end of these instructions to adjust. Once Tire Carrier operation has been verified, confirm all hardware has been tightened properly and all functions are operational (such as LED license plate light, etc.).

*Proceed to the next Step if installing a Rotopax Container and or a Hi-Lift Jack. If not proceed to Step 23.*



Final Latch adjustments (step 20)

21. Prepare to install the Rotopax Container(s). Install hardware to mount the container(s) to the inside of the carrier.

**Hardware;**

- 4 x 1/2" SAE Washer
- 2 x 1/2" Lock Washer
- 2 x 1/2" x 1 3/4" Barrel Nut
- 2 x 1/2" x 1 1/4" Bolt

**Compatibility;** Rotopax are sold separately. Mounting is provided with your Slee Bumper purchase.

The Tire carrier will accept;  
1 x 4 gal. **or**  
2 x 2 gal. Rotopax container(s)



Install hardware to carrier (step 21A)



Install hardware to carrier (**step 21B**)

22. Mount the Rotopax container(s) and tighten hardware to secure as shown.

**Hardware;**

2 x Slee Rotopax Mounting Plates  
2 x 1/2" x 1 3/4" Allen Bolts

**Supplied Tool;**

1 x Allen Key



Mount Rotopax (**step 22A**)



Mount Rotopax (**step 22B**)

23. Prepare to install the *Hi-Lift* Bracket. Mount Bracket to Tire Carrier on the spindle side of the carrier. Properly secure the Hi-Lift Jack to the bracket using the 3/8" Hardware.

**Hardware;**

- 1 x Slee Hi-Lift Bracket with two 3/8" mounting stud
- 1 x Hard Rubber Rectangular Pad
- 2 x Slee Hi-Lift Clamps
- 3 x 3/8" Bolt
- 8 x 3/8" Washer
- 3 x 3/8" Nylock Nut
- 2 x 3/8" Barrel But (Hi-Lift Clamp)
- 2 x 3/8" Lock Washer (Hi-Lift Clamp)

If a Hi-Lift bracket isn't used - installed the two 10-32 SS Screws into the swing arm.



Install Hi-Lift Bracket, if not used install two 10-32 screws into swing arm (**step 23**)

24. Complete a final inspection of the bumper, Tire Carrier functionality and installation.

Installation complete!

Thank you for your purchase from Slee Off-Road! Visit us at [www.sleeoffroad.com](http://www.sleeoffroad.com) or email us at [info@sleeoffroad.com](mailto:info@sleeoffroad.com). Follow us on Facebook and Instagram! Use #sleeoffroad and @sleeoffroad

