



700 Pine Ridge Road Golden CO 80403 Tel (303) 278 8287 1(888) 4X4 SLEE Fax (303) 278 7182

Slee Off-Road Primary Battery Upgrade Tray (SOK0019) - Toyota Land Cruiser / Lexus LX470 1998-2007 – Installation Instructions



Qty	Parts Included	Tools
1	Slee Battery Tray	Basic Hand Tools
1	Slee Battery Tie Down Bracket	Drill and 3/8" Bit
3	Aluminum Spacer	Scissors/ Utility Knife
3	Button Head Allen Bolt	
3	Washer	
3	Nylock Nut	
1	40" Strip Adhesive Padding (to be cut)	
1	Military Terminal - Pair (Positive / Negative)	
4	M8 x 20 Button Head Allen Bolt	
2	Aluminum Battery Terminal Extension	
4	M8 Lock Washer	
2	3/8" Lock Washer (For Military Terminals)	

Thank you for your purchase from Slee Off-Road! If you should you have any questions or concerns, please do not hesitate to contact us immediately at 1-888-4X4-SLEE or at info@sleeoffroad.com.

Slee Off-Road strives to provide comprehensive installation instructions. However, in some circumstances minor inconsistencies may be encountered with instructions and or provided parts. If you encounter such an inconsistency, please notify us, as your input is important. Slee Off-Road guarantees all parts free from defects for one year from the original purchase date.

Slee Off-Road Primary Battery Upgrade Tray (SOK0019) - Toyota Land Cruiser / Lexus LX470 1998-2007 – Installation Instructions - 2 of 6

1. Get organized and verify all parts are present.
Remove the original battery, tray and retain all hardware.

Note; installation was performed on a 2004 Toyota Land Cruiser. Recommend battery Interstate 31P-AGM7.



Remove Battery (**Step 1**)

2. Remove bolts that mount the reservoir in the fender well.

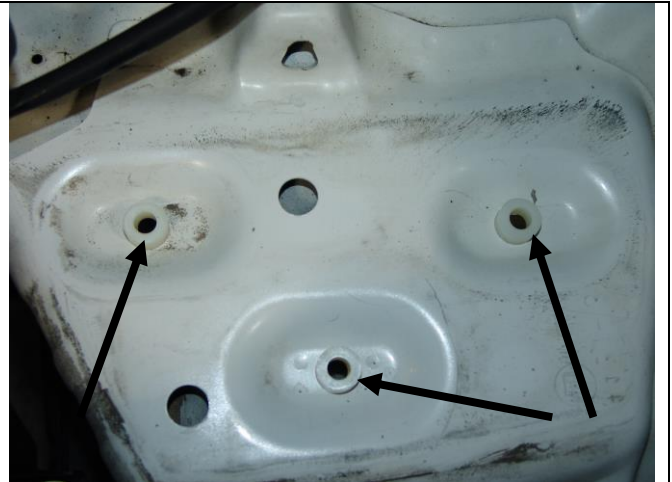


Remove hardware on reservoir (**Step 2**)

3. Enlarge the three holes under the battery tray to 3/8". Place supplied aluminum spacers over holes as shown.

Hardware;
3 x Aluminum Spacers





Drill and install spacers (**Step 3B**)

4. First, install two strips of the adhesive padding on the battery tray (photo 4A). Second, install the J-Bolt retained from step 1 (photo 4B).

Install tray using bolts, washers and Nylock nuts (photo 4C).

Re-install washer bottle removed in step 2.

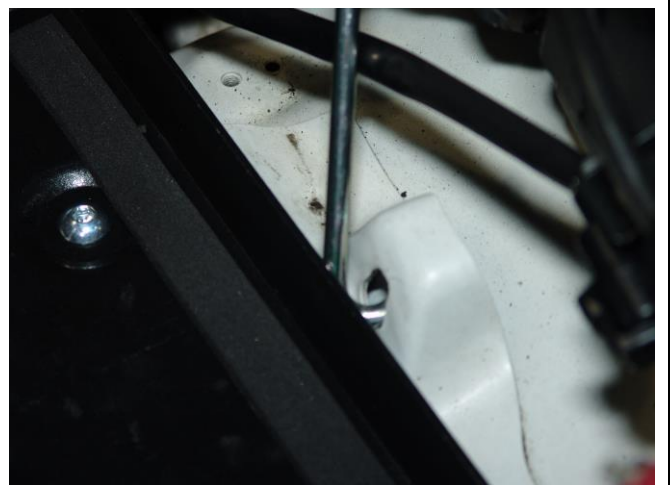
Hardware;

- 1 x Slee Battery Tray
- 1 x 40" Strip Adhesive Padding (to be cut)
- 3 x Button Head Allen Bolt
- 3 x Washer
- 3 x Nylock Nut

Hint; verify the spacers don't move from the installed location from previous step.



Install Adhesive Pads (**Step 4A**)



Install J-Bolt (**Step 4B**)

Slee Off-Road Primary Battery Upgrade Tray (SOK0019) - Toyota Land Cruiser / Lexus LX470 1998-2007 – Installation Instructions - 4 of 6



Note washer locations **(Step 4C)**

5. Install the supplied adhesive padding to underneath side of the Battery Tray Tie down bracket (as shown) using the remaining foam from the previous step.



Install adhesive pads **(Step 5)**

6. Install the battery and Tie Down bracket using original bolt (support side) with J-Bolt and two nuts.

Note; recommend battery Interstate 31P-AGM7



Install battery and tie down bracket **(Step 6)**

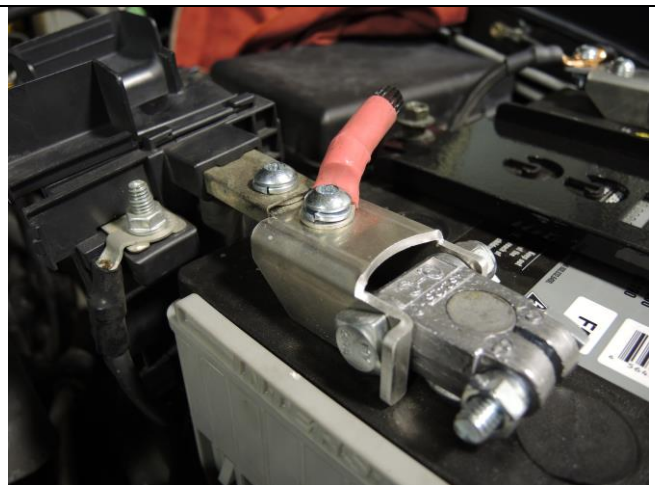


Double Nut on J-Bolt (**Step 6B**)

7. Install the supplied Military Terminals and terminal extensions. Connect battery.

Hardware;

- 1 x Aluminum Battery Terminal Extension
- 1 x Military Terminal - Pair (Positive / Negative)
- 2 x 3/8" Lock Washer (For Military Terminals)
- 4 x M8 Lock Washer
- 4 x M8 x 20 Button Head Allen Bolt
- 2 x Aluminum Battery Extension



Positive shown (**Step 7A**)



Negative shown (**Step 7B**)

8. Installation complete.

Disclaimer; The Slee Off Road Battery tray is designed to fit an Interstate 31P-AGM7. If another battery type or size is installed, validate the battery posts will not touch the hood once closed.



Installation complete (**Step 8**)

Thank you for your purchase from Slee Off-Road! Visit us at www.sleeoffroad.com or email us at info@sleeoffroad.com. Follow us on Facebook and Instagram!

