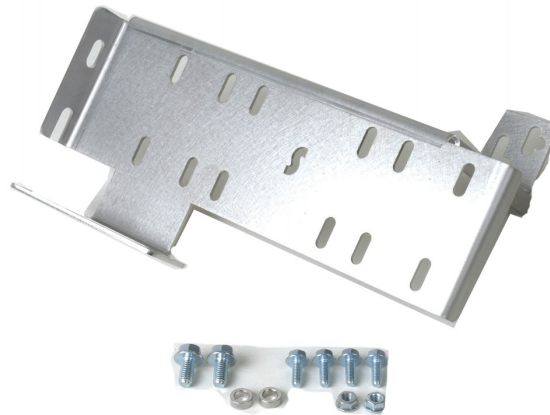




700 Pine Ridge Road Golden CO 80403 Tel (303) 278 8287 1(888) 4X4 SLEE Fax (303) 278 7182

**Slee Off-Road – 2010-2019 4Runner / 2010+ Lexus GX460
Single or Dual Compressor Bracket (SOK0027) - Installation Instructions**



Note: Instructions contained herein depict a powder-coated compressor bracket, however instructions remain applicable to new stainless-steel variant

Qty	Part Description	Tools Required
1	Slee Compressor Bracket	Basic Metric Tools / Sockets
4	M6 x 16 Flange Head Bolt	
2	M8 x 16 Flange Head Bolt	
2	M6 Flange Nut	
2	Aluminum Spacer (Lexus GX470 Application only)	

Thank you for your purchase from Slee Off-Road! If you should you have any questions or concerns, please do not hesitate to contact us immediately at 1-888-4X4-SLEE or at info@sleeoffroad.com.

Slee Off-Road strives to provide comprehensive installation instructions. However, in some circumstances minor inconsistencies may be encountered with instructions and or provided parts. If you encounter such an inconsistency, please notify us, as your input is important. Slee Off-Road guarantees all parts free from defects for one year from the original purchase date.

Slee Off- Road and Slee & Co under no circumstances will be held liable for any damages or injuries to the users of this product(s) and or their equipment as a result of the use of this information or parts obtained from Slee Off Road.

Slee Off-Road – 2010+ 4Runner / 2010+ Lexus GX 460 Single or Dual Compressor Bracket (SOK0027) - Installation Instructions - 2 of 6

1. Get organized and verify all parts are present.

Note; use ARB supplied instructions for wiring the ARB compressor.

For 2020 model year refer to addition instructions in step 5 before proceeding.

Compatibility; ARB CKMTA12 Twin Compressor / ARB CKMA12 Compressor.

2. Using the four bolts, lock washers and washers (supplied with the ARB compressor) mount the compressor to the Slee Bracket.

Note; if installing a twin compressor and lockers the ARB Compressor manifold must be mounted to the bracket using the hardware listed in this step (Step 2B). Disregard this if only using a Single or Dual Air Compressor for an air source *only*.

Hardware;

2 x M6 x 16 Flange Head Bolt
2 x M6 Flange Nut



Mount Compressor to bracket **(step 2A)**

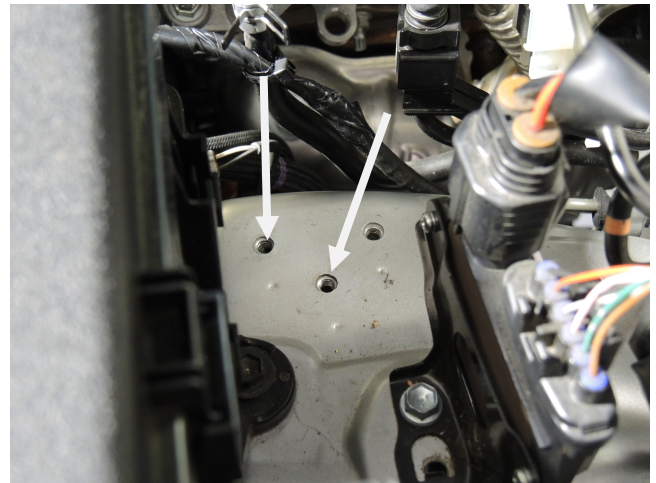


Mount manifold to bracket if necessary **(step 2B)**

Slee Off-Road – 2010+ 4Runner / 2010+ Lexus GX 460 Single or Dual Compressor Bracket (SOK0027) - Installation Instructions - 3 of 6

3. Locate a total of four threaded holes on the driver's side fender and in the engine bay that will be used to mount the compressor bracket.

Note; the M6 Hardware will be installed in location Step 3A. The M8 hardware will be installed in location Step 3B.



Mounting locations identified (step 3A)



Mounting locations identified (step 3B)

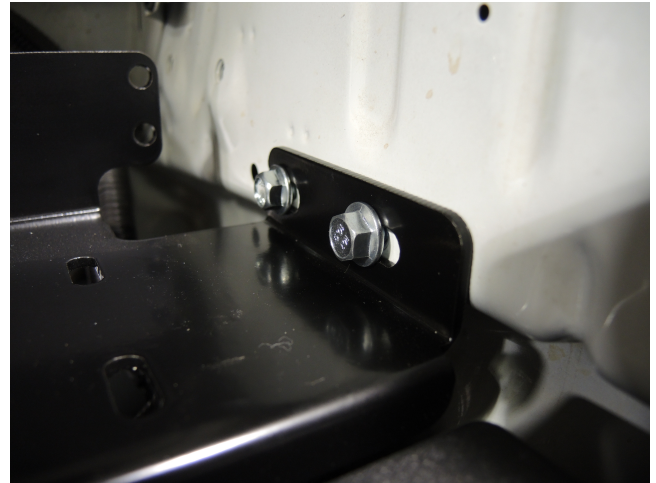
Slee Off-Road – 2010+ 4Runner / 2010+ Lexus GX 460 Single or Dual Compressor Bracket (SOK0027) - Installation Instructions - 4 of 6

4. If installing Bracket for a 2010+ 4Runner proceed with Step 4, if installing on a *Lexus GX470 please skip to step 5.*

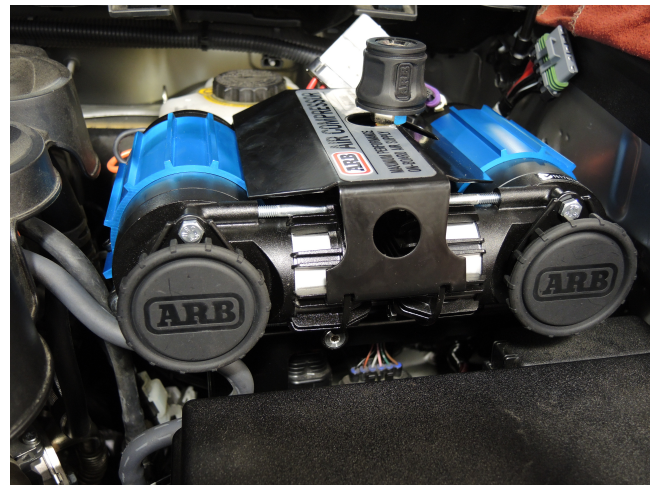
Install the bolts and tighten.

Hardware;

- 2 - M6 x 16 Flange Head Bolt
- 2 - M8 x 16 Flange Head Bolt



Install bracket (**step 4**)



5th Gen 4Runner Installation complete (**step 4B**)

5. Remove bolt on the OE bracket for wiring harnesses as shown. Install bolt and spacer, but do not tighten as shown in Step 5A.

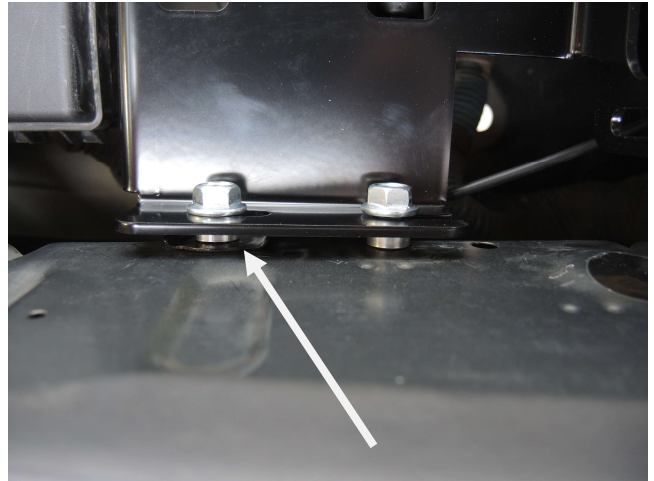
Slide bracket into place using slotted hole, install remaining bolt and aluminum spacer. Install one M6 bolt at the support leg (reference Step 3A if necessary). Tighten all hardware.

Hardware;

- 1 - M6 x 16 Flange Head Bolt
- 2 - M8 x 16 Flange Head Bolt
- 2 – Aluminum Spacers



Remove bolt from bracket, install bolt with spacer – do not tighten (**step 5A**)



Move bracket into place using slotted hole – install remaining bolt and spacer, note orientation of spacers **(step 5B)**



2003-2009 Lexus GX470 installation complete **(step 5C)**

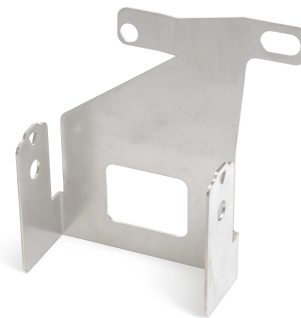
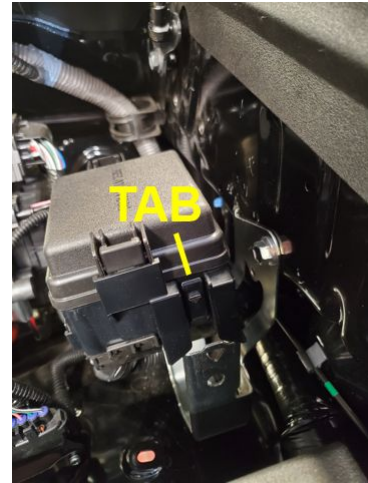
6. Installation - 2020 4runner Relay Box Relocation – Optional Part – Purchased Separate

- Release the 2 tabs holding the box to original mount. Pull the box out of the mount and set it aside.
- Remove the 2- 8mm bolts holding the bracket to the wheel well. The 2- 8mm factory bolts will be reused to mount the new bracket.



Slee Off-Road – 2010+ 4Runner / 2010+ Lexus GX 460 Single or Dual Compressor Bracket (SOK0027) - Installation Instructions - 6 of 6

- Slide the relay box into the new mounting brackets until it clicks into place.
- The new location for the box is located under the lift strut on the driver side. The wire harness is stiff but will allow the box to move into position. Secure the mount with the 2 factory 8mm bolts removed earlier.



New Bracket

Thank you for your purchase from Slee Off-Road! Visit us at www.sleeoffroad.com or email us at info@sleeoffroad.com. Follow us on Facebook and Instagram! Use #sleeoffroad and @sleeoffroad

