



700 Pine Ridge Road Golden CO 80403 Tel (303) 278 8287 1(888) 4X4 SLEE Fax (303) 278 7182

**Slee Off-Road 1998-07 Land Cruiser / LX470 (\* Requires AHC Removal) - Second Battery Tray with Single or Twin ARB Compressor Mounting Kit (SOK0037) - Installation Instructions** NOTE: Main Tray and Support Brackets now Passivated Stainless Steel





Qty	Parts Included	Suggested Tool List
1	Slee Second Battery Tray / Compressor Mount	Metric and Standard Wrenches / Sockets
1	Reservoir Mounting Tab	Utility Knife
2	Tray Support Bracket	Drill & Bit(s)
1	Battery Hold Down Bracket	
2	J-Bolt	
4	5/16" Nut Grade 8 ZY	
2	5/16" SAE Flat Washer ZY	
8	5/16" USS Flat Washer ZY	
3	5/16" Nylon Lock Nut - Grade 8 ZY	
3	5/16" x 3/4" Bolt - Grade 8 ZY	
1	M8 x 12mm 1.25 Flange Bolt	
1	M8 x 35 1.25 Flange Bolt	
4	M6 x 16 1.0 Flange Bolt	
4	M6 x 1.0 Smooth Flange Nut	
1	Aluminum Spacer 3/4" OD	
1	#10 Self Drilling Screw (not in photo)	

Thank you for your purchase from Slee Off-Road! If you should you have any questions or concerns, please do not hesitate to contact us immediately at 1-888-4X4-SLEE or at [info@sleeoffroad.com](mailto:info@sleeoffroad.com).

**Slee Off-Road 1998-07 Land Cruiser / LX470 (\* Requires AHC Removal) - Second Battery Tray with Single or Twin ARB Compressor Mounting Kit (SOK0037) - Installation Instructions \* Requires AHC removal**  
- 2 of 11

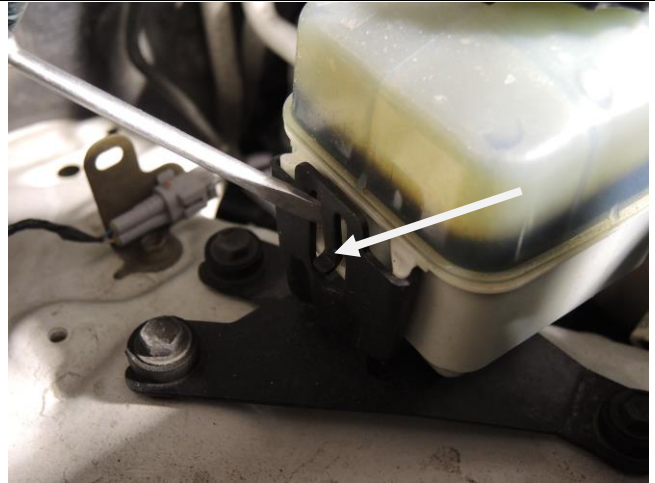
Slee Off-Road strives to provide comprehensive installation instructions. However, in some circumstances minor inconsistencies may be encountered with instructions and or provided parts. If you encounter such an inconsistency, please notify us, as your input is important. Slee Off-Road guarantees all parts free from defects for one year from the original purchase date.

Slee Off-Road and Slee & Co under no circumstances will be held liable for any damages or injuries to the users of this product(s) and or their equipment as a result of the use of this information or parts obtained from Slee Off-Road.

<p>1. Get organized and verify all parts are present.</p> <p><b>Compatibility;</b> designed for Interstate MT7-75DT AGM Battery.</p>	
<p>2. Remove DRL resistor if equipped. Unclip Harness as shown and set aside.</p>	 <p>Remove DRL Resistor if equipped (<b>Step 2A</b>)</p>  <p>Unclip harness set aside if applicable (<b>Step 2B</b>)</p>

**Slee Off-Road 1998-07 Land Cruiser / LX470 (\* Requires AHC Removal) - Second Battery Tray with Single or Twin ARB Compressor Mounting Kit (SOK0037) - Installation Instructions \* Requires AHC removal**  
- 3 of 11

3. Inspect the two Power Steering hoses that go to the reservoir. If hoses are brittle it may be necessary to replace. Carefully remove the power steering reservoir by unclipping as shown.



Remove Power Steering Reservoir (**Step 3**)

4. Unplug mass air flow sensor at intake. Loosen hose clamp and remove air box and filter. The bottom of the air box requires removal of three bolts as shown in Step 4C.

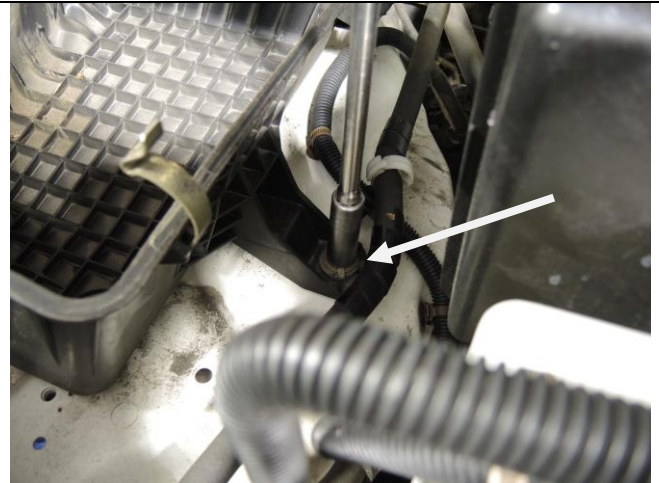


Unplug MAF (**Step 4A**)



Loosen bolt at intake (**Step 4B**)

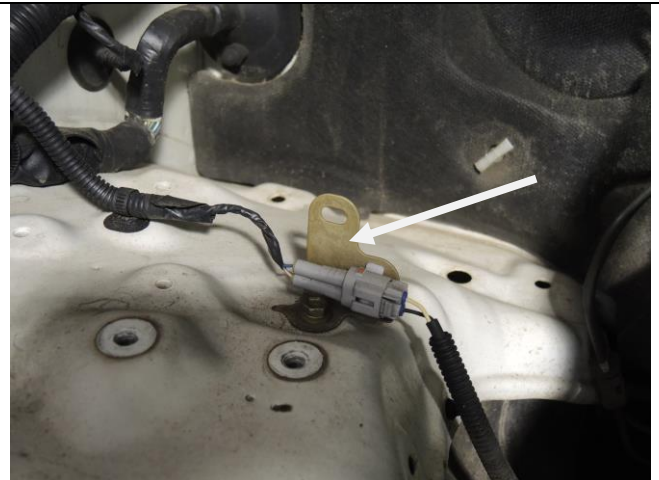
**Slee Off-Road 1998-07 Land Cruiser / LX470 (\* Requires AHC Removal) - Second Battery Tray with Single or Twin ARB Compressor Mounting Kit (SOK0037) - Installation Instructions \* Requires AHC removal**  
- 4 of 11



Remove air box (**Step 4C**)

5. Locate ABS harness bracket and bend as shown in Step 5B.  
Remove clip that retains ABS harness as shown in Step 5C and 5D.

**Note;** on a LX470 the AHC harness (not pictured) will need to be secured neatly as not to impede battery tray fitment.



Locate ABS Harness bracket (**step 5A**)



Bend ABS Harness bracket as shown (**Step 5B**)



**Slee Off-Road 1998-07 Land Cruiser / LX470 (\* Requires AHC Removal) - Second Battery Tray with Single or Twin ARB Compressor Mounting Kit (SOK0037) - Installation Instructions \* Requires AHC removal**  
- 5 of 11



Locate and disengage clip (**Step 5C**)

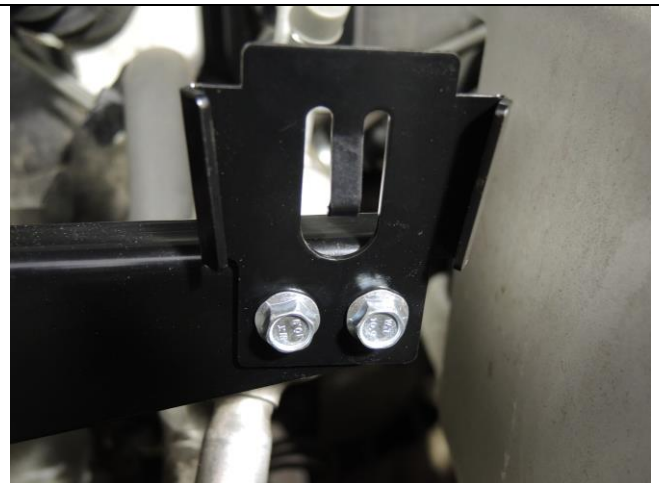


Clip removed from harness (**Step 5D**)

6. Mount Reservoir Mounting Tab to battery tray.

**Hardware;**

- 2 x M6 x 16 1.0 Flange Bolt
- 2 x M6 x 1.0 Smooth Flange Nut
- 1 x Reservoir Mounting Tab



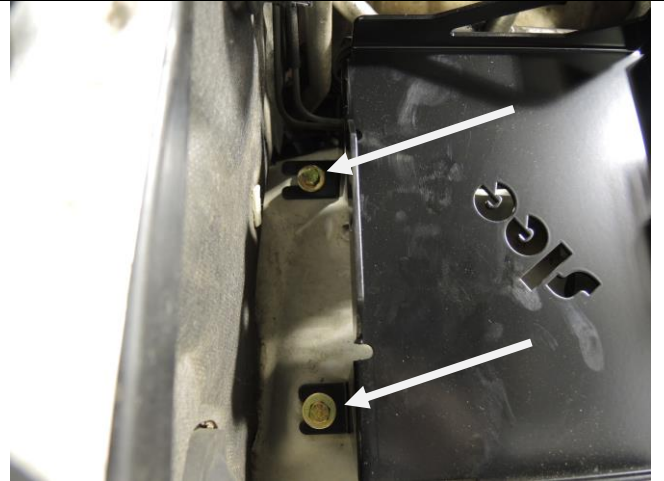
Front Driver Side leg installed (**Step 6A**)

**Slee Off-Road 1998-07 Land Cruiser / LX470 (\* Requires AHC Removal) - Second Battery Tray with Single or Twin ARB Compressor Mounting Kit (SOK0037) - Installation Instructions \* Requires AHC removal**  
- 6 of 11

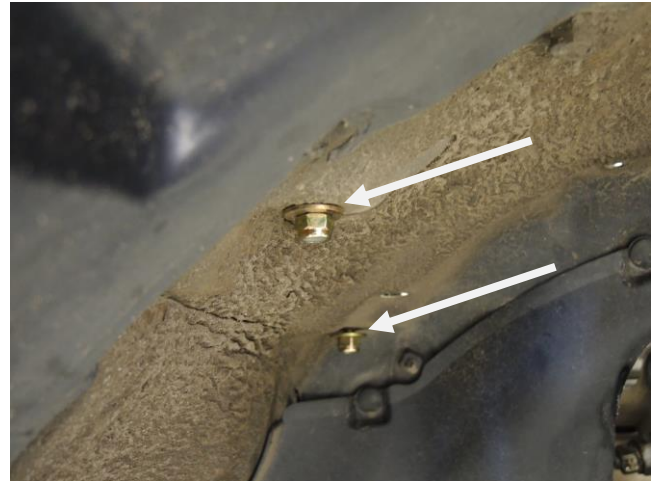
7. Place tray and install hardware as shown. Do not tighten.

**Hardware;**

- 4 x 5/16" USS Flat Washer ZY
- 2 x 5/16" Nylon Lock Nut - Grade 8 ZY
- 2 x 5/16" x 3/4" Bolt - Grade 8 ZY
- 1 x Slee Second Battery Tray with Compressor Mount



Place tray and hardware (**Step 7A**)

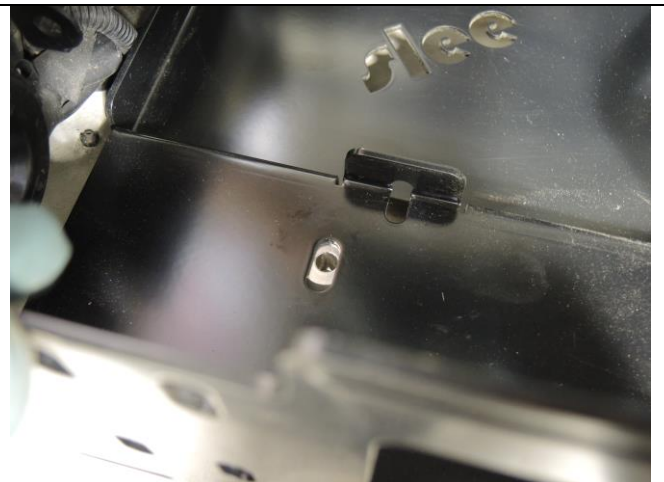


Detailed view of hardware orientation (**Step 7B**)

8. Place Aluminum spacer under tray and install metric bolt. Do not tighten.

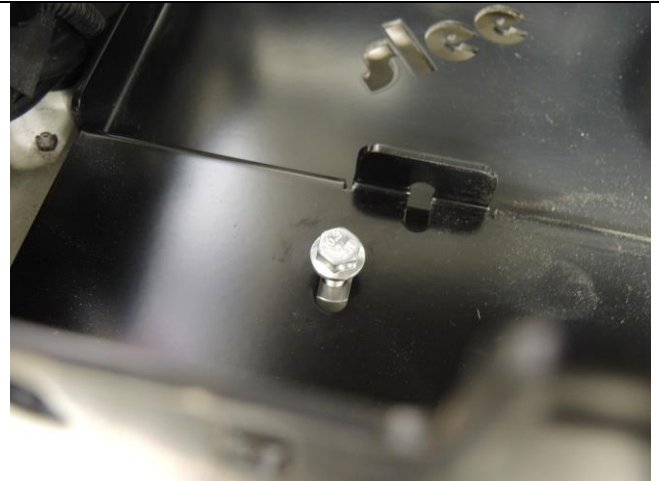
**Hardware;**

- 1 x M8 x 35 1.25 Flange Bolt
- 1 x Aluminum Spacer 3/4" OD



Place aluminum spacer into position (**Step 8A**)

**Slee Off-Road 1998-07 Land Cruiser / LX470 (\* Requires AHC Removal) - Second Battery Tray with Single or Twin ARB Compressor Mounting Kit (SOK0037) - Installation**  
Instructions \* Requires AHC removal  
- 7 of 11



Install M8 Bolt (**Step 8B**)

9. Install leg to tray as shown.

**Hardware;**

- 1 x M8 x 12mm 1.25 Flange Bolt
- 1 x M6 x 16 1.0 Flange Bolt
- 1 x M6 1.0 Smooth Flange Head Nut
- 1 x Tray Support Bracket

**Note;** if ARB twin compressor is being installed do not use Slee supplied hardware. Use the supplied metric bolt from ARB to secure the leg through the tray and into the compressor.



Install leg (**Step 9**)

10. Install leg to tray as shown. Mark fender, remove leg, drill hole to accept 5/16" Bolt. Reinstall leg and hardware.

**Hardware;**

- 2 x 5/16" USS Flat Washer ZY
- 1 x 5/16" Nylon Lock Nut - Grade 8 ZY
- 1 x 5/16" x 3/4" Bolt - Grade 8 ZY
- 1 x M6 x 16 1.0 Flange Bolt
- 1 x M6 1.0 Smooth Flange Head Nut
- 1 x Tray Support Leg


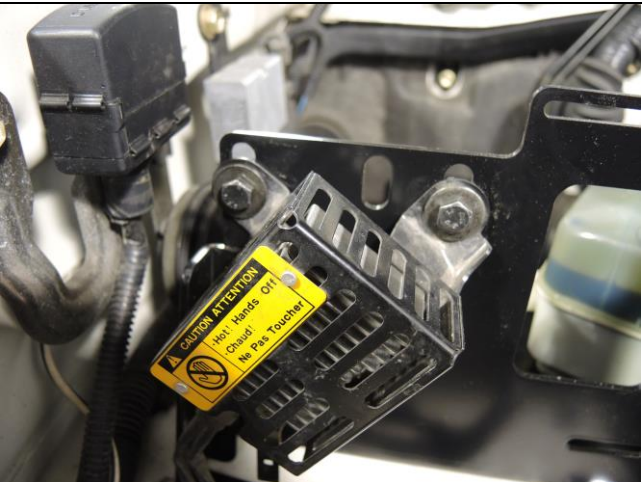
**Note;** if ARB single or twin compressor is being installed do not use Slee supplied hardware at the tray. Use the supplied metric bolt from ARB to secure the leg through the tray and into the compressor.



Install leg closet to fender (**Step 10**)



**Slee Off-Road 1998-07 Land Cruiser / LX470 (\* Requires AHC Removal) - Second Battery Tray with Single or Twin ARB Compressor Mounting Kit (SOK0037) - Installation Instructions \* Requires AHC removal**  
- 8 of 11

<p>11. Tighten all hardware.</p>	
<p>12. Trim Power Steering Reservoir as indicated by arrows. Gently slide the Power Steering reservoir on to Slee bracket until retention clip fully engages. Verify hose to engine cover clearance and move hose(s) if necessary.</p> <p><b>Hint;</b> it may be necessary to release tension on hose clamps to position rubber lines at reservoir correctly.</p>	 <p>Trim reservoir and mount (<b>Step 12</b>)</p>
<p>13. Install DRL resistor removed in Step 2. Photo 13A shows mounted to tray if ARB compressor was installed (using ARB supplied hardware). Photo 13B shows DRL mounted to fender if necessary. If fender option is necessary remove and reinstall bolt as shown along with self-Drilling screw.</p> <p><b>Hardware;</b> 1 x #10 Self Drilling Screw</p>	 <p>DRL mounted - Option A (<b>Step 13A</b>)</p>



**Slee Off-Road 1998-07 Land Cruiser / LX470 (\* Requires AHC Removal) - Second Battery Tray with Single or Twin ARB Compressor Mounting Kit (SOK0037) - Installation Instructions \* Requires AHC removal**  
- 9 of 11



DRL mounted - Option B (**Step 13B**)

14. Install battery, tie down and hardware.

**Hardware;**

- 1 x Battery Hold Down Bracket
- 2 x J-Bolt
- 4 x 5/16" Nut Grade 8 ZY
- 2 x 5/16" SAE Flat Washer ZY
- 2 x 5/16" USS Flat Washer ZY



Install battery (**Step 14**)

15. Depending on the brand of battery installed the relationship of the harness to the battery may be close. It can be slightly repositioned if desired (Optional Step) as shown.



Harness to battery relationship (**Step 15A**)

**Slee Off-Road 1998-07 Land Cruiser / LX470 (\* Requires AHC Removal) - Second Battery Tray with Single or Twin ARB Compressor Mounting Kit (SOK0037) - Installation Instructions \* Requires AHC removal**  
- 10 of 11



Remove harness bracket and two bolts (**Step 15B**)



Cut tab as shown (**Step 15C**)



Harness successfully repositioned (**Step 15D**)

**Slee Off-Road 1998-07 Land Cruiser / LX470 (\* Requires AHC Removal) - Second Battery Tray with Single or Twin ARB Compressor Mounting Kit (SOK0037) - Installation Instructions \* Requires AHC removal**  
- 11 of 11

16. Re-install OE air box as removed in Step 4. Plug in MAF.

17. Install terminals and connect battery. Installation complete.

**Note;** shown with optional ARB Single CKMA12 Compressor and dual battery IBS Management System.



Installation complete (Step 17A)



Installation complete (Step 17B)

Thank you for your purchase from Slee Off-Road! Visit us at [www.sleeoffroad.com](http://www.sleeoffroad.com) or email us at [info@sleeoffroad.com](mailto:info@sleeoffroad.com). Follow us on Facebook and Instagram! Use #sleeoffroad and @sleeoffroad

