



700 Pine Ridge Road Golden CO 80403 Tel (303) 278 8287 1(888) 4X4 SLEE Fax (303) 278 7182

Slee Off-Road Single or Twin Compressor Bracket (SOK00038) - 2016+ Toyota Tacoma – Installation Instructions



NOTE: The instructions contained herein depict a black powder-coated product but remain applicable to the current Passivated Stainless-Steel variant.

Qty	Parts Included	Tools
1	Slee Compressor Bracket	Basic Metric Hand Tools
1	Support Leg	Metric Open Ended Wrenches
6	M6 x 16 Flange Head Bolt *	
4	M6 Flange Nut *	
2	M6 Fender Washer	
1	M8 Flange Nut *	
1	5/16" USS Washer Zinc *	
2	90° Brass Fitting	
	<i>* Depending on your application not all hardware may be used.</i>	

Thank you for your purchase from Slee Off-Road! If you should you have any questions or concerns, please do not hesitate to contact us immediately at 1-888-4X4-SLEE or at info@sleeoffroad.com.

Slee Off-Road strives to provide comprehensive installation instructions. However, in some circumstances minor inconsistencies may be encountered with instructions and or provided parts. If you encounter such an inconsistency, please notify us, as your input is important. Slee Off-Road guarantees all parts free from defects for one year from the original purchase date.

Slee Off-Road Single or Twin Compressor Bracket (SOK0038) - 2016+ Toyota Tacoma -
Installation Instructions - 2 of 4

1. Get organized and verify all parts are present.

Determine Compressor orientation. ARB CKMA12 Compressor can be mounted easily with several options at the installer's preference.

ARB CKMATA12 Twin Compressor must be mounted closet to the engine as possible (reference 1A). Mount compressor with ARB supplied hardware. If Twin Compressor is installed note bolt orientation for support leg (reference 4B).

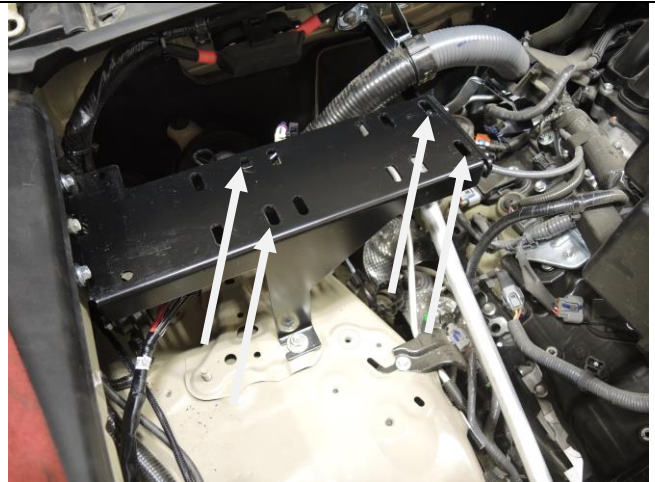
ARB #171503 Manifold Kit is mounted to the Compressor Bracket Support Leg (reference 1B).

Hardware;

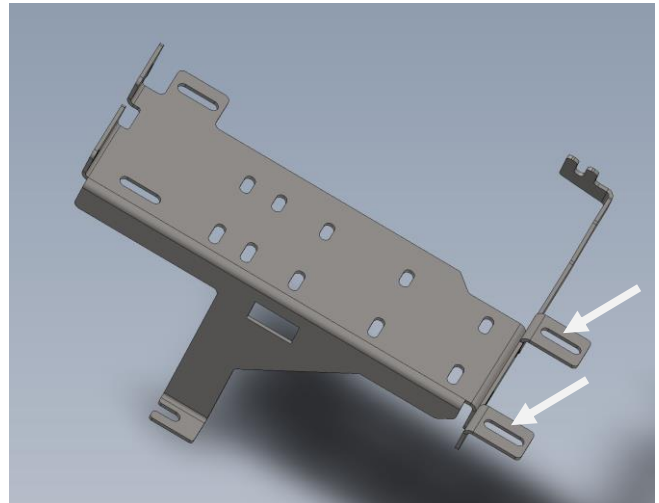
2 x M6 x 16 Flange Head Bolt *
2 x M6 Flange Nut *

Note; * Depending on your installation not all hardware may be used.

Compatibility; ARB CKMTA12 Twin Compressor (may require Manifold kit #171503) / ARB CKMA12 Compressor. Pump up kit sold separately (#171302).



Get organized, determine compressor mounting position. Arrows indicate twin compressor mounting location (Step 1A)

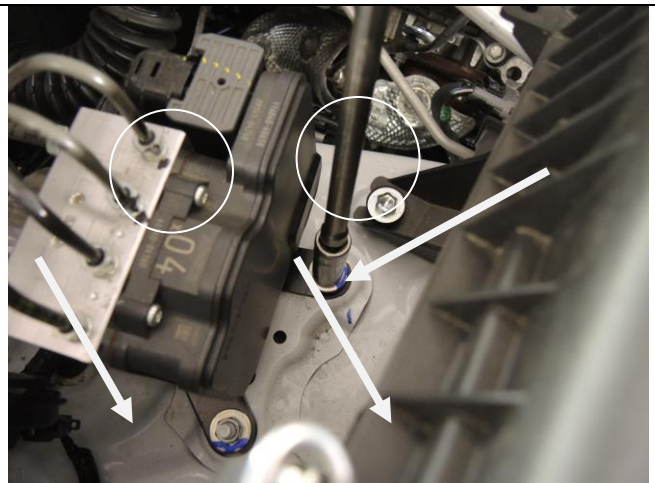


ARB Manifold Kit Mounting Location. (Step 1B)

2. Loosen M8 Nut as shown at ABS. If nut isn't present use hardware supplied.

Hardware;

1 x M8 Flange Nut *
1 x 5/16" USS Washer Zinc *



Loosen M8 Nut (Step 2)

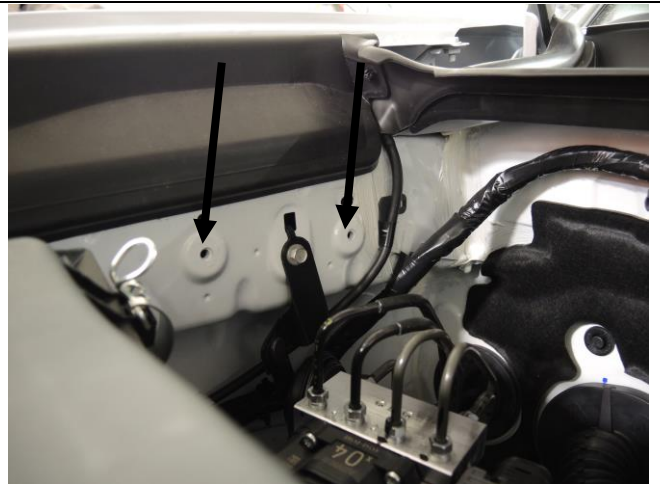
Slee Off-Road Single or Twin Compressor Bracket (SOK0038) - 2016+ Toyota Tacoma -
Installation Instructions - 3 of 4

3. Locate two threaded holes in passenger fender to mount bracket. Do not tighten.

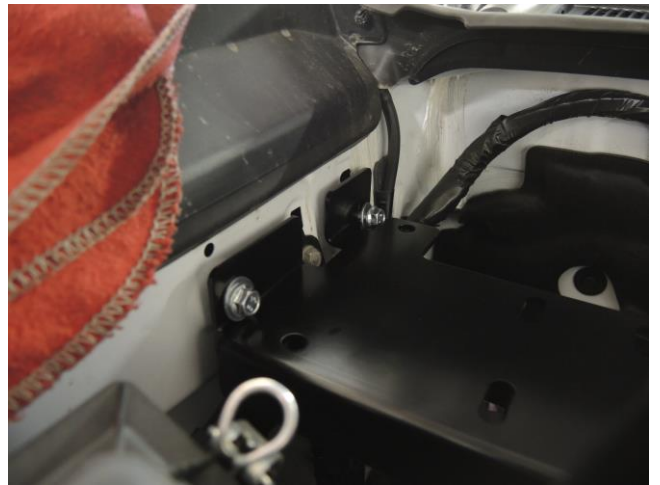
Hardware;

- 1 x Slee Compressor Bracket
- 2 x M6 x 16 Flange Head Bolt *
- 2 x M6 Fender Washer

Hint; "chase" or "tap" threads if necessary.



Locate fender mounting location (**Step 3A**)



Do not tighten (**Step 3B**)

4. Loosen three nuts at firewall. Install support leg.

Hardware;

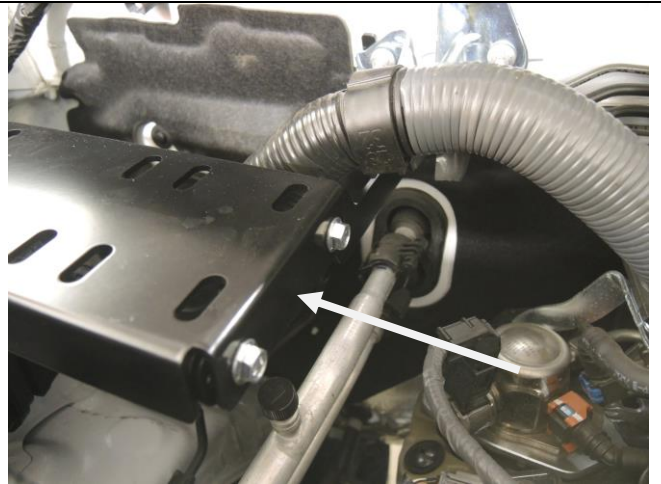
- 2 x M6 x 16 Flange Head Bolt
- 2 x M6 Flange Nut
- 1 x Support Leg

Note; verify clearance with brake lines.

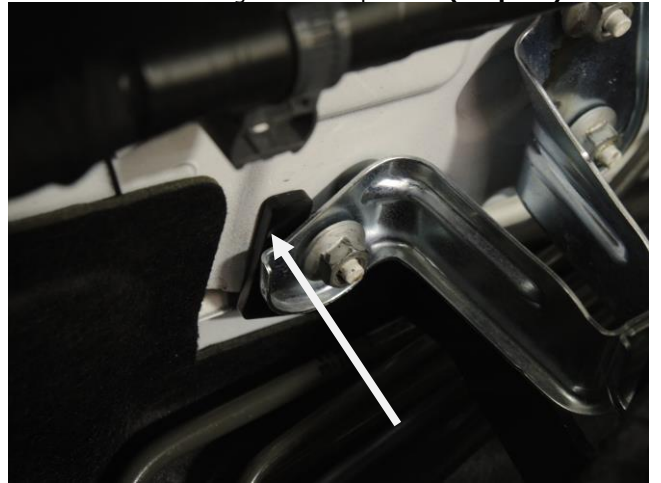


Loosen three nuts at firewall, install leg support (**Step 4A**)

Slee Off-Road Single or Twin Compressor Bracket (SOK0038) - 2016+ Toyota Tacoma -
Installation Instructions - 4 of 4



Install Leg support, attach to main bracket. Reference Step 1C if installing Twin Compressor (**Step 4B**)



Leg support orientation to firewall (**Step 4C**)

5. Tighten all hardware. Wire compressor / switch per ARB instructions. Installation complete.



Thank you for your purchase from Slee Off-Road! Visit us at www.sleeoffroad.com or email us at info@sleeoffroad.com. Follow us on Facebook and Instagram! Use #sleeoffroad and @sleeoffroad

