



700 Pine Ridge Road Golden CO 80403 Tel (303) 278 8287 1(888) 4X4 SLEE Fax (303) 278 7182

Slee Off-Road – [2nd Gen Tundra SliderSteps] (SOK1241) – Installation instruction 1



**For
2007– Pres Tundra**

Thank you for your purchase from Slee Off-Road! If you should you have any questions or concerns, please do not hesitate to contact us immediately at 1 888 4X4 SLEE or at sales@sleeoffroad.com.

Slee Off-Road strives to provide comprehensive installation instructions. However, in some circumstances minor inconsistencies may be encountered with instructions and or provided parts. If you encounter such an inconsistency, please notify us, as your input is important.

Slee Off-Road guarantees all parts free from defects for one year from the original purchase date. Slee Off-Road and Slee & Co under no circumstances will be held liable for any damages or injuries to the users of this product(s) and or their equipment as a result of the use of this information or parts obtained from Slee Off Road.

Slee Off-Road – [2nd Gen Tundra SliderSteps] (SOK1241) – Installation instruction 2

QTY	Parts Included
2	Slee SliderStep
4	Tread plate
2	Leg bracket
1	1/2" x 2" OD Large Thick Washer, Custom Shaped for Brake Line Clearance
5	1/2" x 2" OD Large Thick Washer
2	Weld-on tab (rear)
2	1/2" Lock washer
6	1/2" x 1-1/2" Hex Bolt
2	1/2" x 1-1/4" Hex Bolt
8	1/2" Washer, SAE
6	1/2" Nylock nut
2	1/2" Sticknut
10	7/16" x 1" Bolt
20	7/16" Washer
10	7/16" Nylon-Insert Lock Nut
2	3/8" x 1-1/4" Hex Bolt
8	3/8" x 1-1/2" Countersink bolt
10	3/8" Washer
2	3/8" Lock washer
8	3/8" Nylock nut
2	3/8" Sticknut
4	M8 x 30mm Flange Bolt
2	M8 Flange Nut
32	1/4" x 5/8" Socket Head Bolt
32	1/4" Nylon-Insert Locking Flange Nut

Tools Required
Metric Tools
SAE Tools
Floor Jack
Drill
7/16" drill bit
Wire wheel or brush
Welder
Rustproofing (paint or similar)

NOTE: This kit requires welding to complete the installation.

1 Organize the work area. Make sure all parts are present.

2 Assemble the tread plates.

Hardware:

(32) 1/4" Socket head bolt

(32) 1/4" Nylock flange nut



Assemble the Tread plates. (Step 2)

3 Remove the bolts on the driver side wire harness bracket and fuel tank skid plate. Do not remove the fuel tank or its skidplate.

This is next to the parking brake cable bracket.

Late model Tundras may have a plastic inner frame rail plug. Remove this as well. Retain for reinstall.

Retain all factory hardware for re-use.



Remove the wire harness bracket. (Step 3)

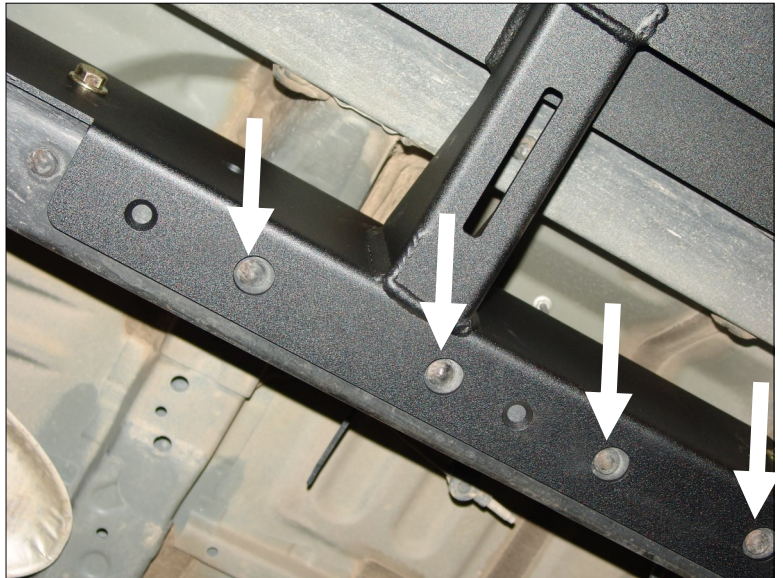
4 Align the slider against the frame rail. Note the holes for clearance of the rivets in the frame rail. These will help align the slider to the vehicle.

Secure slider in place with the listed hardware.

Hardware:

(4) M8 x 30mm Flange Bolt

(2) M8 Flange Nut



Align slider flange to frame rivets. (Step 4)

5 Replace the hardware for the wiring harness bracket.



Reinstall the harness bracket. (Step 5)

6 Replace the fuel tank skid plate and hardware.



Replace the fuel tank skid. (Step 6)

7 Install the thru-bolts in the side of the frame rails. Use the large washer against the inside of the frame rail.

Take care to not crush or damage any brake lines. Brake lines should not rub on any part of the slider, hardware, or frame rails. If the brake lines contact hardware, gently flex them out of the way.

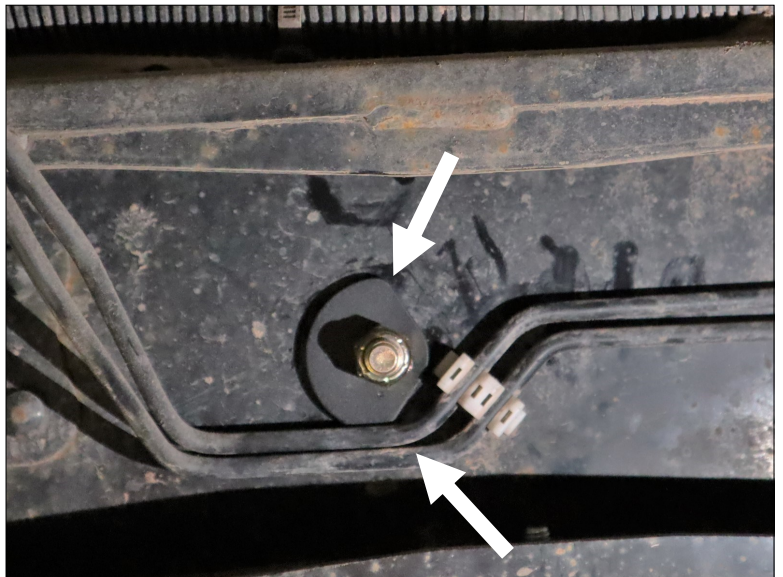
Note the positioning of the thick washer that is custom shaped for brake line clearance. It is critical that the hardware not contact the brake line as this could damage the brake lines. If necessary, gently flex and bend the brake lines to clear the new hardware.

Hardware:

- (6) 1/2" x 1-1/2" Bolt
- (5) 1/2" Large Thick Washer
- (1) 1/2" Large Thick Custom Shaped Washer
- (6) 1/2" SAE Washer
- (6) 1/2" Nylon Locknut



Bolt the slider to the frame using thick washers. (Step 7)



Use the custom shaped washer for line clearance. (Step 7)

8 Install the sticknut into the frame crossmember. Bend the tail to help access the nut location inside the crossmember. Use the hole shown to feed the sticknut.

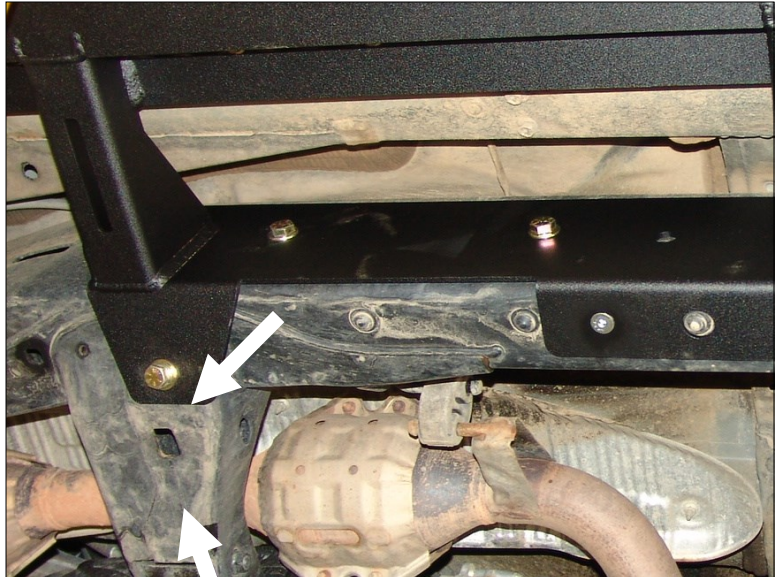
After installing the bolt, you may trim the tail of the sticknut. Leave enough length to reinstall the nut, should the sliders need to be removed for any reason.

Hardware:

- (2) 1/2" Sticknut
- (2) 1/2" x 1-1/4" Bolt
- (2) 1/2" Washer
- (2) 1/2" Lock Washer



Install the hardware through the frame. (Step 8)



Trim the sticknut tail, leaving enough to service if required. (Step 8)

9 Clean the rear spring perches to bare metal as shown to prepare for welding. Temporarily mount the rear leg bracket to the slider.

Hardware:

- (8) 7/16" x 1" Bolt
- (16) 7/16" Washer
- (8) 7/16" Nut



Mount the rear leg bracket. (Step 9)



Bolt the leg bracket to the frame. (Step 9)

10 Install the sticknut into the spring perch. Secure the leg bracket with hardware. Attach the weld tab onto the leg bracket.

Hardware:

- (2) 7/16" x 1" Bolt
- (4) 7/16" Washer
- (2) 7/16" Nut
- (2) 3/8" 1-1/4" Bolt
- (2) 3/8" washer
- (2) 3/8" sticknut

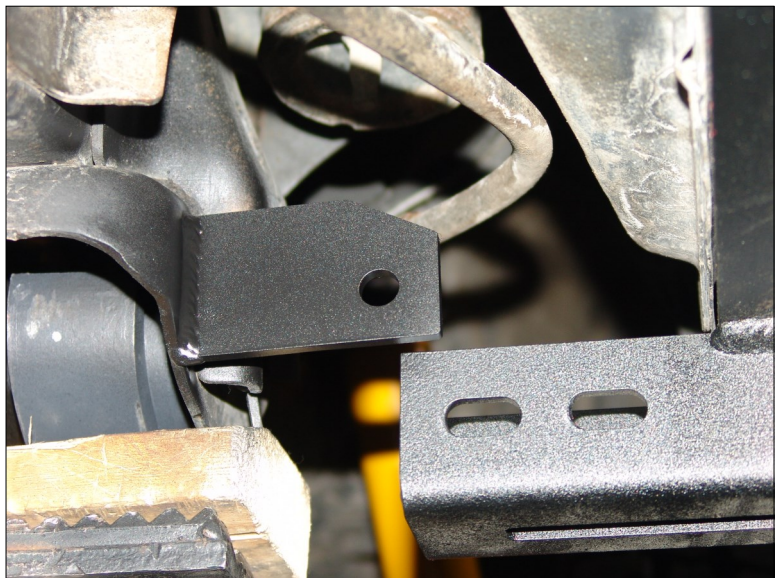


Bolt the leg bracket to the frame. (Step 10)

11 Weld the tab to the spring perch. After welding, unbolt the leg bracket and spray the area with rustproof coating or paint.



Weld the tab to the frame. (Step 11)

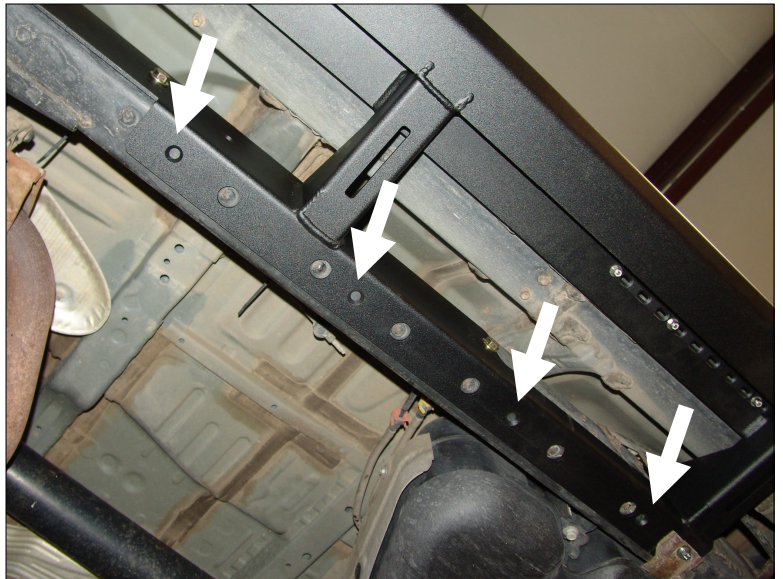


Paint the tab and spring perch. (Step 11)

12 Using a center punch or transfer punch, drill the frame to accept the lower hardware.

Note the brake line routing as to not damage it during drilling. Use a drill stop if necessary.

Optionally apply paint or other rustproofing to drilled areas of frame.



Drill the frame for lower hardware. (Step 12)

13 Install the lower hardware.

Hardware:

(8) 3/8" x 1-1/2" Countersink Bolt

(8) 3/8" Washer

(8) 3/8" Nylon Locknut



Install the lower hardware. (Step 13)

14 Securely tighten all hardware. Verify all factory components have been reinstalled.

This completes the installation of the SOK1341 Slidersteps for Tundra.



Secure all hardware to complete installation. (Step 14)