



700 Pine Ridge Road Golden CO 80403 Tel (303) 278 8287 1(888) 4X4 SLEE Fax (303) 278 7182

Slee Off-Road 2005+ Toyota Tacoma Slider Steps (SOK1278) – Installation Instructions
 * Tacoma Double and Extra Cab Pickup Trucks Only



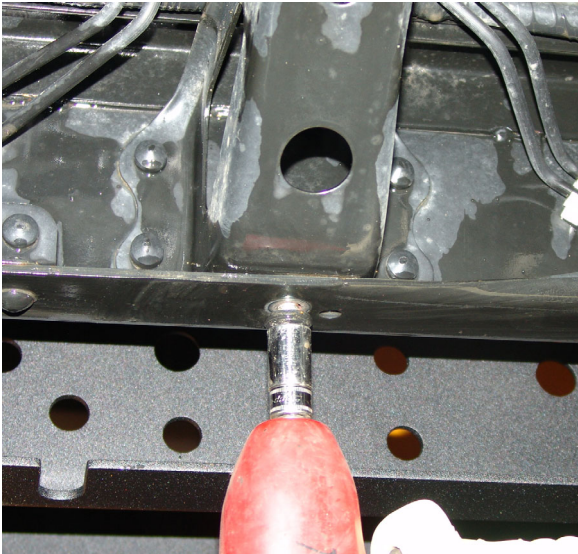
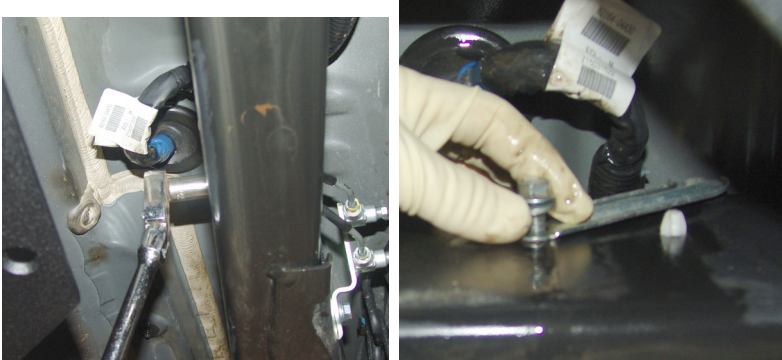
Product Update; the Step Plates have been updated (piece with Slee Logo) and now is a bolt on piece that is provided with your order.

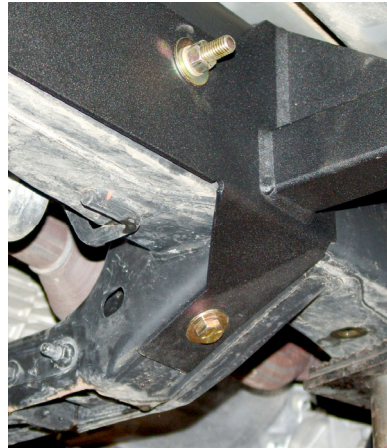
Qty	Part Description	Qty	Part Description
1	Pair of Slider Steps	8	3/8" Large Washers
12	1/2"x1 1/2" Bolts	8	3/8" x 1" Carriage Head Bolts
8	1/2" Nuts	8	3/8" Lock Nuts
18	1/2" Large Washers	8	Round Backing Plate for 1/2" Bolts
12	1/2" Lock Washers	24	#10-32 Button Head Counter Sink Bolts
2	1/2" Small Washers	24	#10-32 Stainless Flange Lock Nuts
2	1/2" Stick Nut	2	"Z" Nut Brackets (Directional)
2	10mm x 30mm 1.25 Bolts		
2	8mm x 30mm x 1.25 pitch - Bolts		

Thank you for your purchase from Slee Off-Road! If you should you have any questions or concerns, please don't hesitate to contact us immediately at 1 888 4X4 SLEE or at sales@sleeoffroad.com.

Slee Off-Road strives to provide comprehensive installation instructions. However, in some circumstances minor inconsistencies may be encountered with instructions and or provided parts. If you encounter such an inconsistency, please notify us, as your input is important. Slee Off-Road guarantees all parts free from defects for one year from the original purchase date.

Slee Off-Road and Slee & Co under no circumstances will be held liable for any damages or injuries to the users of this product(s) and or their equipment as a result of the use of this information or parts obtained from Slee Off-Road.

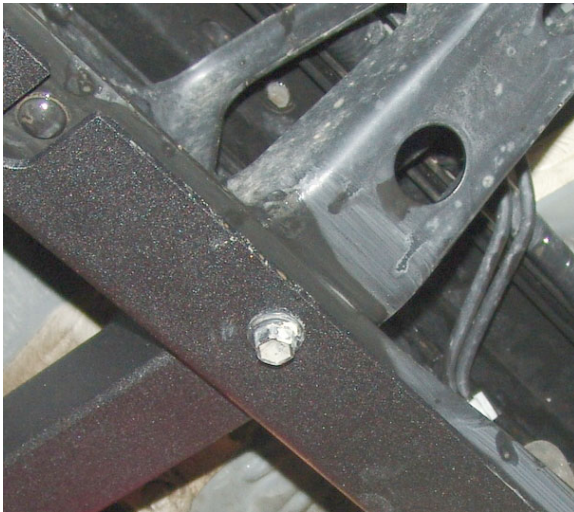
	<p>Step 1. Install both step plates onto the sliders using the supplied #10 hardware. Install all of the screws before tightening and make sure to gap evenly around the edges.</p>
	<p>Step 2. Remove the two 10mm bolts located underneath the 2nd cross member on each side of the frame rail. One bolt each on driver and passenger side.</p>
	<p>Step 3. Remove the 8mm bolt on DS frame rail that attaches the wire bracket to the frame. Move the bracket out of the way for slider installation. The bracket is located on the outside / forward side of the frame rail.</p>



Step 4.

Position the DS slider against the frame rail and support with jack-stands. The front of the slider has the angled bracket on it.

The angled bracket is located against the transmission cross member.



Step 5.

Use one of the 10mm x 30mm bolts and attach the slider to the frame in the same location as the bolt that was removed in step 1.

Tighten until snug. Do not attempt to hang the complete slider from this bolt. Make sure the slider is still supported by jack stands.

The slider should sit flush with the bottom and side of the frame rail. Make sure the harness and bracket that was removed in step 2 doesn't get pinched between slider and the frame.

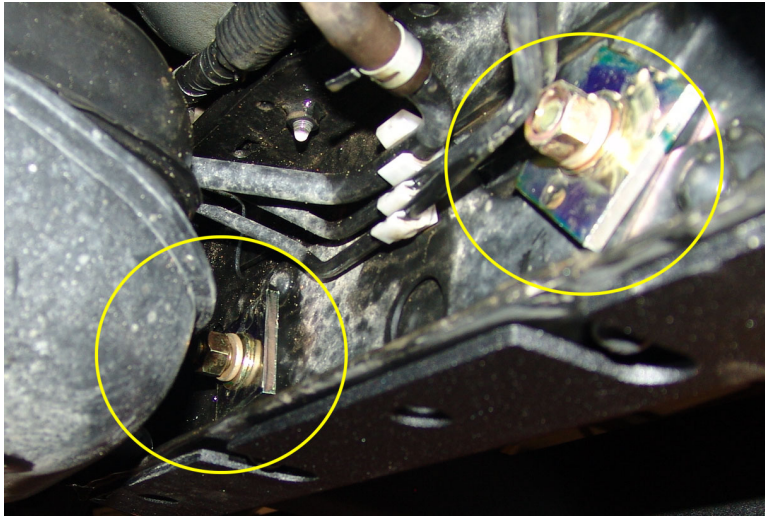


Step 6.

Install a 1/2" bolt with **large** washer from the outside frame rail in the location as shows on the left. Gently bend the brake lines out of the way of the bolt. Slide one of the small backing plates over the bolt and put a lock washer and nut on the bolt. Tighten finger tight.

Step 7.

Install an 8mm x 30mm bolt in the location where the bolt was removed in Step 2. Finger tighten.



Step 8.

Repeat Step 6 at the locations as shown on the left. This is just ahead of the gas tank on the DS frame rail. Make sure that brake lines are out of the way.

For the rearmost bolt, use a **small** 1/2" washer on the outside to prevent interference with the slider leg.

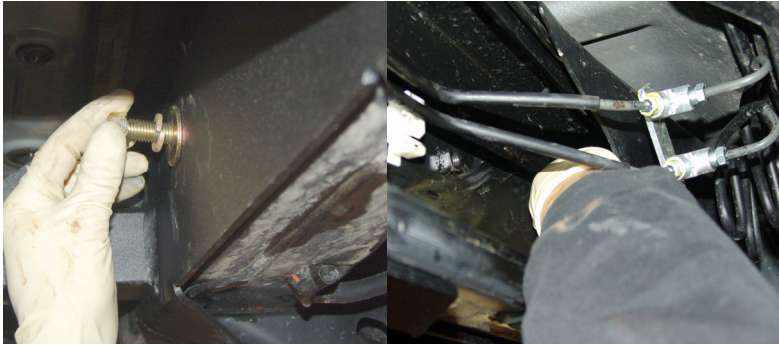


Step 9.

Remove 8mm bolt that holds brake lines to inside frame rail. Do not discard bolt. We are only removing this bolt to make access to the inside frame rail easier.

Step 10.

Unclip the brake lines from the brackets on the frame rail.



Step 11.

This bolt is installed opposite of all the other bolts. Take a 1/2" bolt with large round backing plate and insert from the inside of the frame rail to the outside and apply hardware.

Step 12.

Access to the last two holes is in the boxed section of the frame. The stick nut is used for the hole located by the front tire and should be installed first. Use 1/2" bolt with lock washer and flat washer - No inside washer is needed for this location.



Step 13.

Install "Z" Nut Bracket into the slot located in the back of the transmission cross member. This can be seen in the picture for Step 4. The arrow shows the direction for the back of the truck. There is a left and a right side Z bracket. The bracket will allow the nut to align with the slot on the slider flange if it is installed correctly. Install hardware as shown in the picture.

Step 14.

Install PS side slider in the same way. The PS slider does not have all the brake lines and brackets to contend with. However the slider is installed in the same way as the DS side.

Step 15.

TORQUE BOLTS - Torque the bolts installed in Step 5 to 14 ft. lbs.

Then torque all 1/2" Bolts to 80 ft. lbs.



OPTIONAL

Step 16.

For better attachment, drill the 4 holes through the bottom of the frame using the slider as a template. Drill the holes to 3/8" and use the 3/8" carriage head bolts with hardware to bolt the bottom of the slider to the frame.

Thank you for your purchase from Slee Off-Road! Visit us at sleeoffroad.com or email us at sales@sleeoffroad.com. Follow us on Facebook and Instagram!

