



700 Pine Ridge Road Golden CO 80403 Tel (303) 278 8287 1(888) 4X4 SLEE Fax (303) 278 7182

Slee Off-Road – [SliderSteps for Tacoma 3rd Gen] (SOK1328) – Installation instruction 1



Thank you for your purchase from Slee Off-Road! If you should you have any questions or concerns, please do not hesitate to contact us immediately at 1 888 4X4 SLEE or at sales@sleeoffroad.com.

Slee Off-Road strives to provide comprehensive installation instructions. However, in some circumstances minor inconsistencies may be encountered with instructions and or provided parts. If you encounter such an inconsistency, please notify us, as your input is important.

Slee Off-Road guarantees all parts free from defects for one year from the original purchase date. Slee Off-Road and Slee & Co under no circumstances will be held liable for any damages or injuries to the users of this product(s) and or their equipment as a result of the use of this information or parts obtained from Slee Off Road.

Slee Off-Road – [SliderSteps for Tacoma 3rd Gen] (SOK1328) – Installation instruction 2

QTY	Parts Included
1	Left SliderSteps
1	Right SliderSteps
2	SliderSteps plate insert
24	#10-32 x 3/4" Countersink screw
24	#10-32 Nylock nut
10	1/2" x 1-1/2" Bolt
10	1/2" Lock washer
8	1/2" USS washer (large)
2	1/2" SAE washer (small)
6	1/2" x 2" plate washer
6	1/2" Nut
2	"Z" Nut plate
2	1/2" Stick nut
4	3/8" x 1-1/2" countersink socket head bolt
4	3/8" Washer
4	3/8" Lock washer
4	3/8" Nut
2	M10x30x1.25 Flange bolt
2	M10 Thick washer

Tools Required
Metric Tools
SAE Tools
Drill
Center punch or similar
1/8" Drill Bit
3/8" Drill Bit
Impact Wrench (Recommended)

1 Organize the work area. Verify that all parts of the kit are present.

Install the SliderStep inserts into the sliders.

Hardware:

(24) #10-32 x 3/4" countersink screw

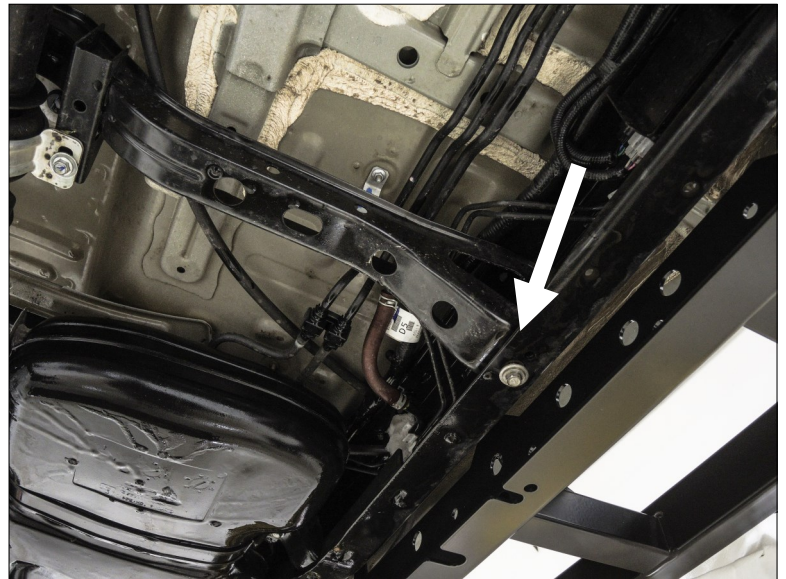
(24) #10-32 nylock nut



Install the SliderStep inserts. (Step 1)

2 Unbolt both sides of the frame cross-member as shown. This fastener is too short to be used with the sliders and can be discarded.

Remove the plastic plugs from the frame rails before installing the sliders.



Remove the (2) crossmember bolts. (Step 2)

3 Place the passenger SliderStep against the frame. Install (2) bolts at the rear of the slider and (1) at the front. Do not fully tighten yet.

Hint: Note the location of the SAE (small) washer and the USS (large) washer.

Hardware:

(3) 1/2" x 1-1/2" bolt

(3) 1/2" lock washer

(2) 1/2" USS (large) washer

(1) 1/2" SAE (small) washer

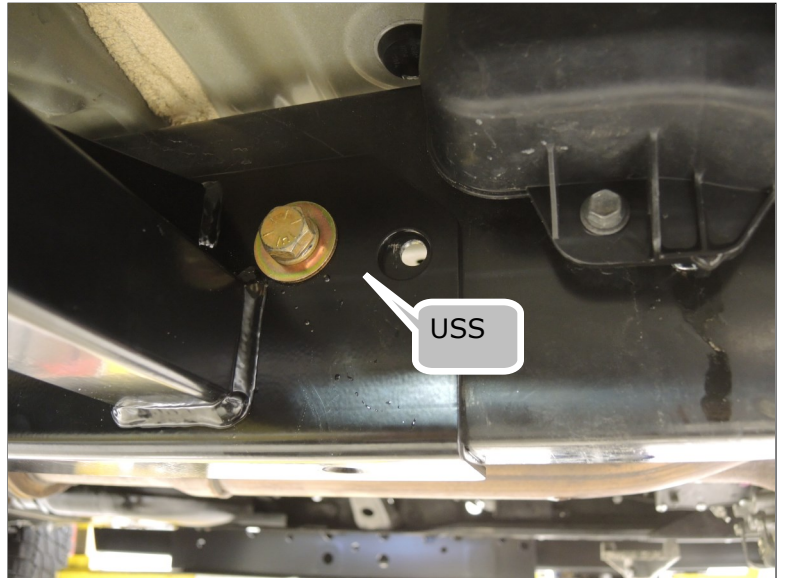
(3) 1/2" x 2" plate washer

(3) 1/2" nut



Use 3 bolts to keep the passenger slider in place. (Step 3)

Hint: Because of necessary clearances and model year variations, not every hole will be filled with a bolt.



Use 3 bolts to keep the passenger slider in place. (Step 3)

4 Install hardware for the front leg using the stick nut and "Z" nut plate. Tighten all hardware, including the hardware from the previous step.

Hint: Newer trucks may have a plastic cap for the frame rail. Remove the plastic cap to access the inside of the rail. Replace after installation.

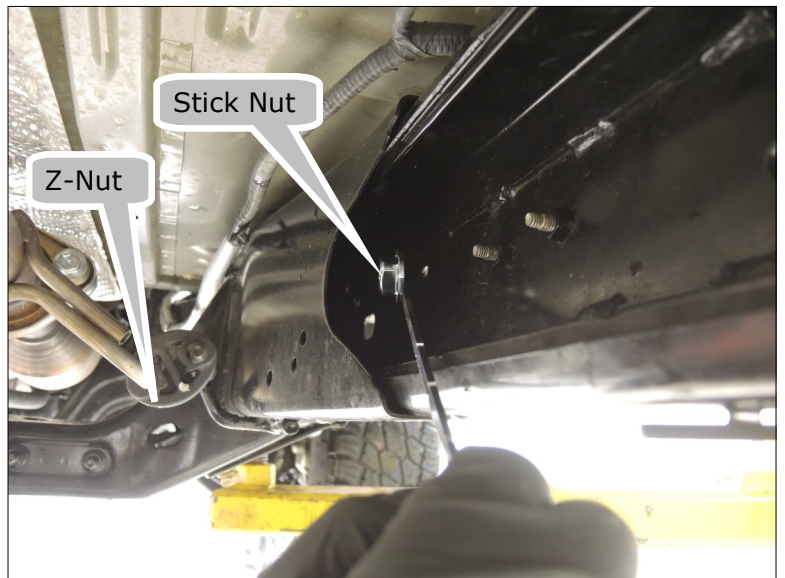
Note: The "Z" nut plates are side specific. If one nut doesn't fit, try the opposite.

Hardware:

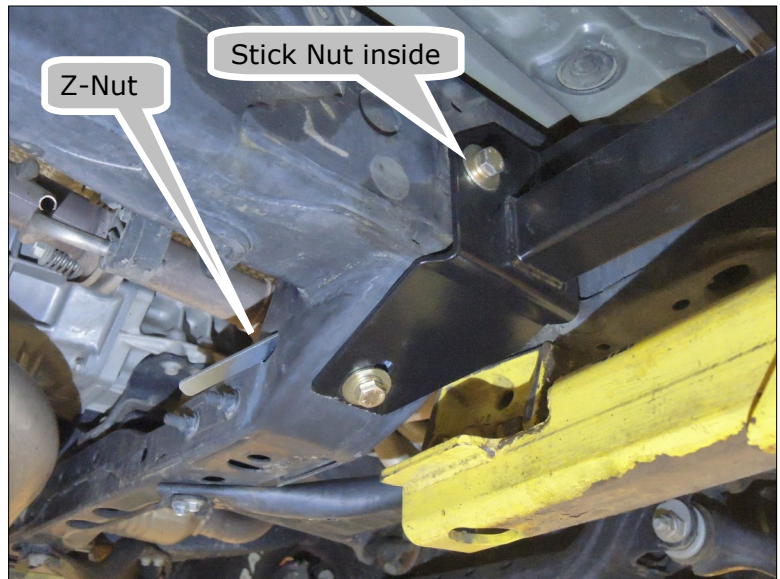
- (2) 1/2" x 1-1/2" bolt
- (2) 1/2" lock washer
- (2) 1/2" USS (large) washer
- (1) 1/2" "Z" nut plate
- (1) 1/2" stick nut



Inside frame view: Remove the frame rail cap if equipped. (Step 4)



Inside frame view: Install the 1/2" stick nut. (Step 4)



Outside frame view: Hardware installs to the Z nut and plate. (Step4)

5 Note the (2) chamfered holes on the underside of the slider. Mark or center-punch these holes. Drill pilot holes and finish off with the 3/8" hole.



Mark and drill two holes on the underside flange. (Step 5)

6 Install the hardware for the underside of the slider flanges.

Hardware:

- (2) 3/8" x countersink bolt
- (2) 3/8" nut
- (2) 3/8" washer



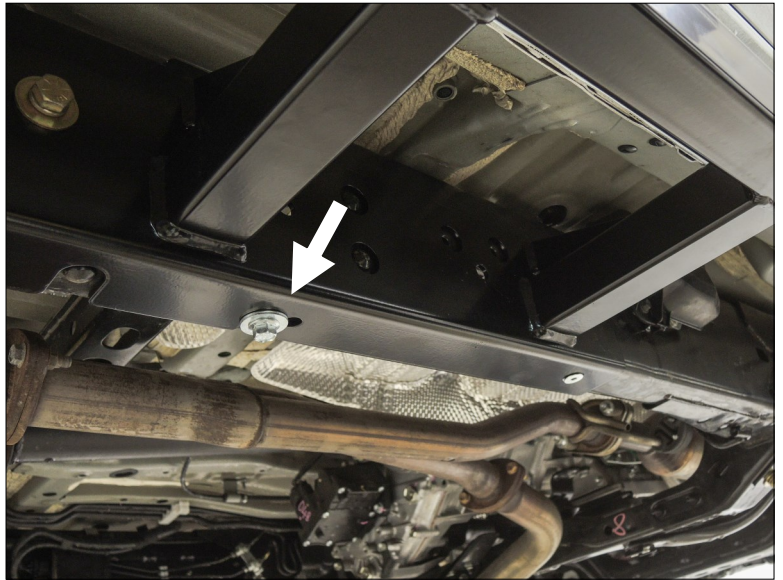
Install the countersink bolts on the underside of the slider. (Step 6)

7 Install the new hardware for the crossmember.

Hardware:

(1) M10x30 flange bolt

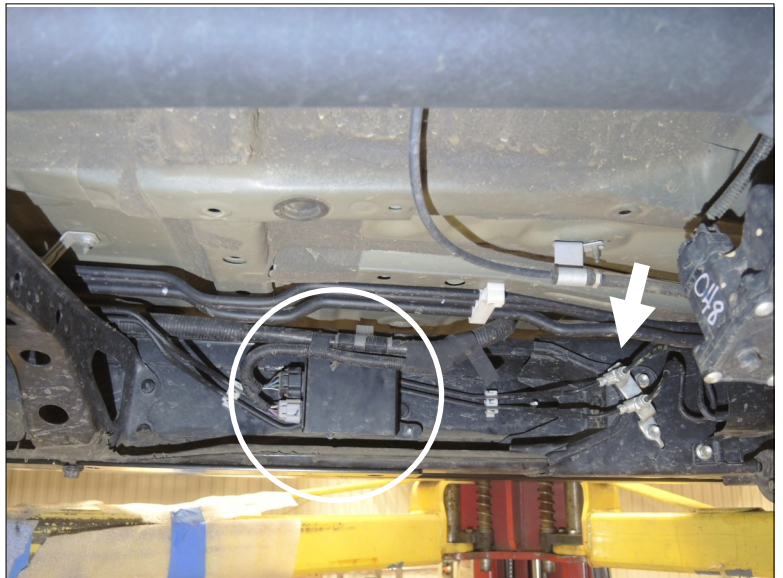
(1) M10 thick washer



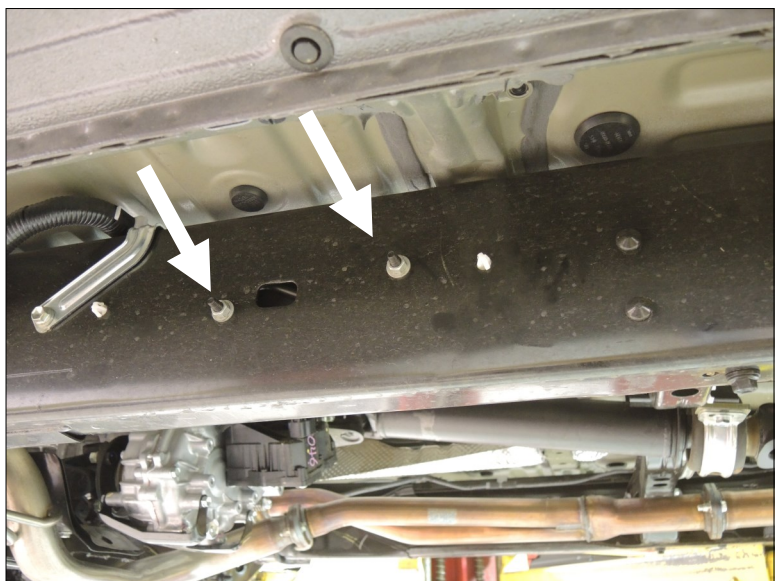
Install the new hardware for the crossmember. (Step 7)

8 On the driver side frame rail, locate the relay box. Unbolt this box by loosening the (2) nuts on the outside of the frame rail. Place the box aside. It is not necessary to unplug or completely remove the box.

Remove the plastic frame rail cover indicated by the arrow.



Locate the relay on the driver's side frame rail. (Step 8)



Remove the box by unscrewing (2) nuts. (Step 8)

10 Place the slider up to the frame rail. Use some of the hardware and rivet relief cuts to help locate the slider.

Hint: If accessing the rear nut is difficult, drop the plastic fuel tank cover.

Hardware:

- (3) 1/2" x 1-1/2" bolt
- (3) 1/2" lock washer
- (2) 1/2" USS (large) washer
- (1) 1/2" SAE (small) washer
- (3) 1/2" x 2" plate washer
- (3) 1/2" nut

11 Pop the brake lines out of the plastic retainer clips. Reshape the lines behind the relay box by gently, but firmly pressing on them. It is critical that the lines do not rub on the new slider hardware. Once the lines clear the hardware, return the lines to their plastic clips and reinstall the plastic frame rail cover.

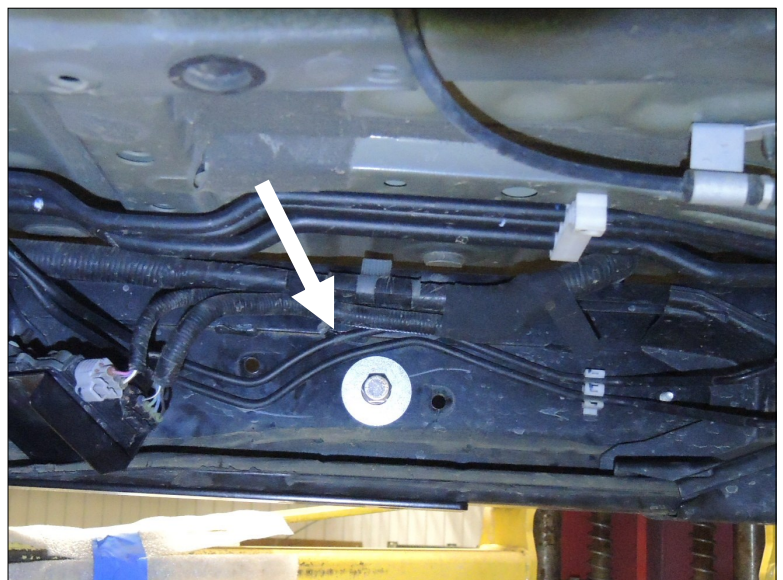
Note: because of the location of the relay box, the bolt near it must be installed outward, that is, with the head of the bolt facing the inside.



Install the driver side slider. (Step 10)



Install the forward bolt with the head inside the rails. (Step 11)

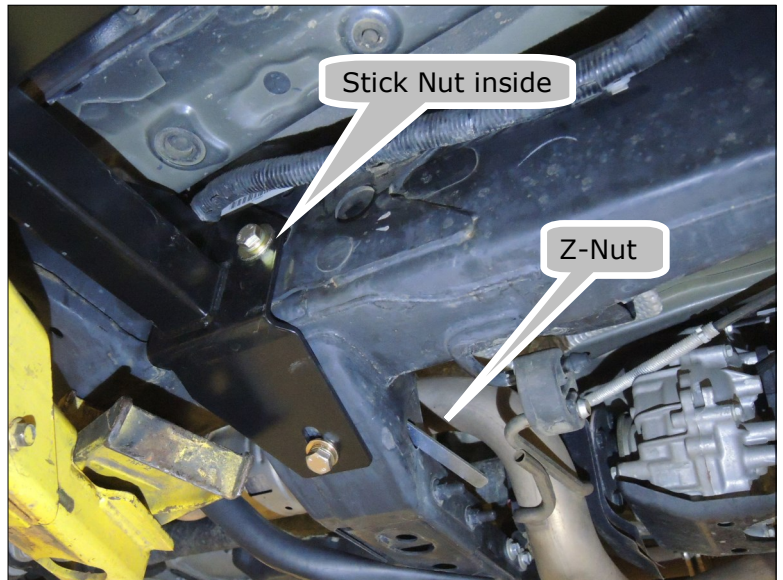


Reshape the brake lines around the hardware. (Step 11)

12 Install the hardware for the front leg of the driver side slider.

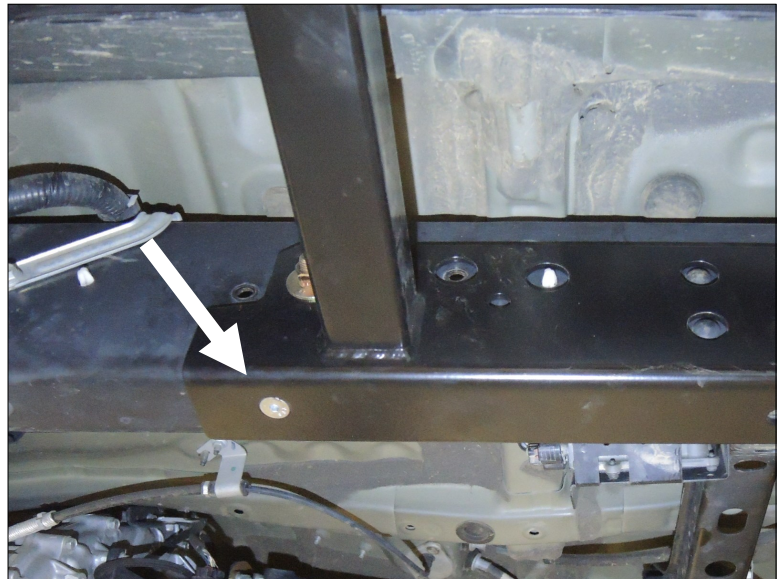
Hardware:

- (2) 1/2" x 1-1/2" bolt
- (2) 1/2" lock washer
- (2) 1/2" USS (large) washer
- (1) 1/2" "Z" nut plate
- (1) 1/2" stick nut



Install the front leg hardware. (Step 12)

13 Note the (2) chamfered holes on the underside of the slider. Mark or centerpunch these holes. Drill pilot holes and finish off with the 3/8" hole.



Drill the holes under the slider rail. Install the hardware.(Step 13/14)

14 Install the hardware for the underside of the slider.

Hardware:

- (2) 3/8" x countersink bolt
- (2) 3/8" nut
- (2) 3/8" washer



Drill the holes under the slider rail. Install the hardware.(Step 13/14)

15 Reinstall the relay box using the existing hardware.

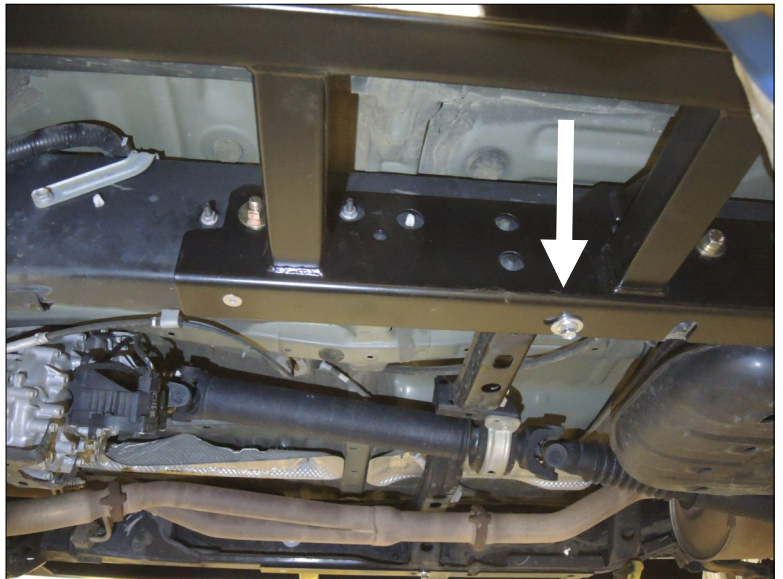


Reinstall the relay box. (Step 15)

16 Install the new hardware for the frame crossmember.

Hardware:

- (1) M10x30 flange bolt
- (1) M10 thick washer



Install the new frame crossmember hardware. (Step 16)

17 Double check that all hardware is tight and secure, that the plastic covers are in place, and that the relay box is secure. This completes the installation of your Slee SliderSteps for 3rd Gen Tacomas.