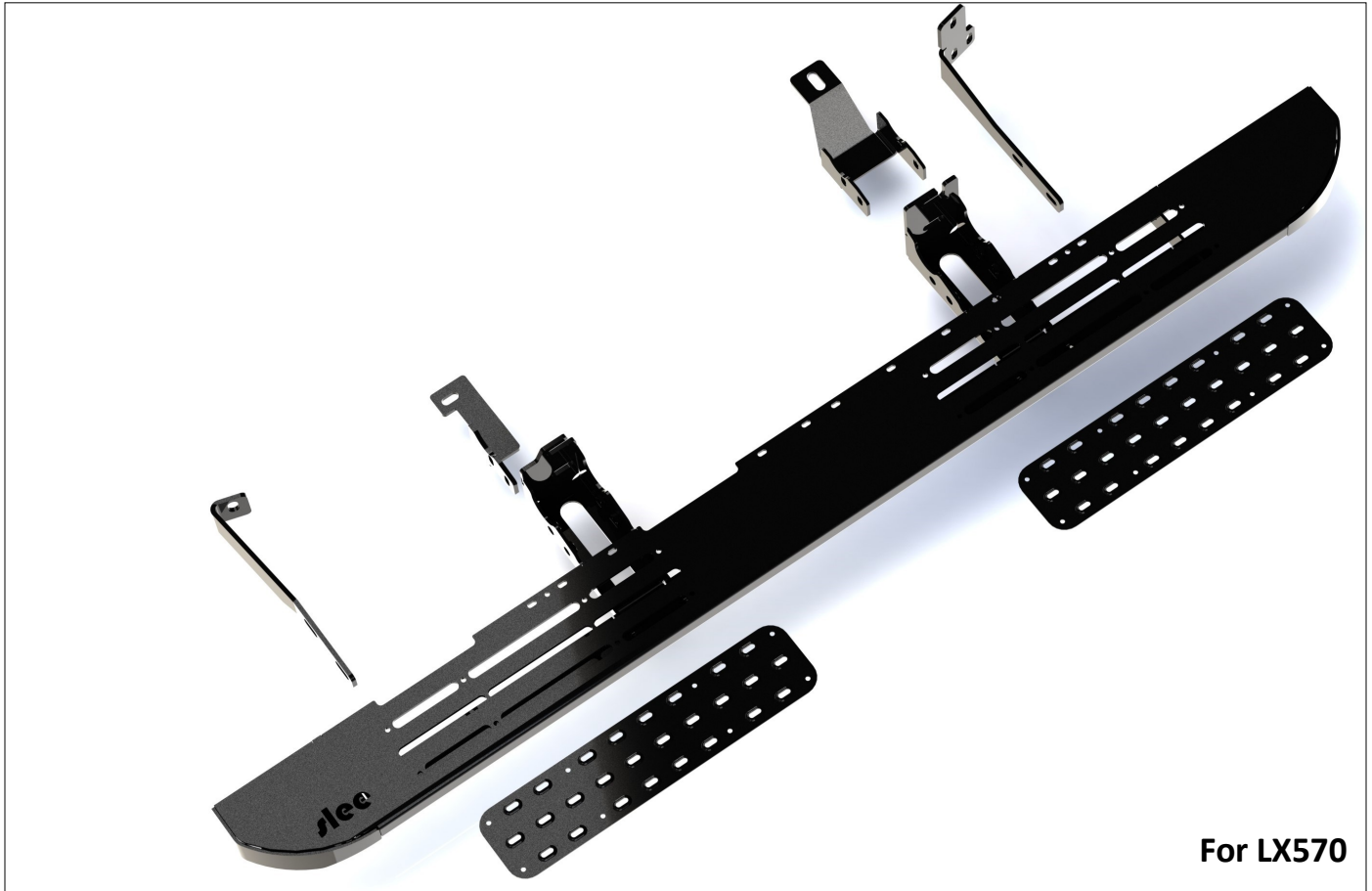




700 Pine Ridge Road Golden CO 80403 Tel (303) 278 8287 1(888) 4X4 SLEE Fax (303) 278 7182

## Slee Off-Road – [LX570/200 FORMED SLIDER] (SOK1329) – Installation instruction 1



Thank you for your purchase from Slee Off-Road! If you should you have any questions or concerns, please do not hesitate to contact us immediately at 1 888 4X4 SLEE or at [sales@sleeoffroad.com](mailto:sales@sleeoffroad.com).

Slee Off-Road strives to provide comprehensive installation instructions. However, in some circumstances minor inconsistencies may be encountered with instructions and or provided parts. If you encounter such an inconsistency, please notify us, as your input is important.

Slee Off-Road guarantees all parts free from defects for one year from the original purchase date. Slee Off-Road and Slee & Co under no circumstances will be held liable for any damages or injuries to the users of this product(s) and or their equipment as a result of the use of this information or parts obtained from Slee Off Road.

## Slee Off-Road – [LX570/200 FORMED SLIDER] (SOK1329) – Installation instruction 2

QTY	Parts Included - for LX570
1	Left SLEE formed sliders - 2008+ LX570 Sliders
1	Right SLEE formed sliders - 2008+ LX570 Sliders
4	Aluminum Tread Plates
1	Right Trans. Cross Member Bracket
1	Left Trans. Cross Member Bracket
1	Right Rear Frame Bracket
1	Left Rear Frame Bracket
1	Right Rear Bottom Frame Bracket
1	Left Rear Bottom Frame Bracket
1	Left Front Frame Mount
1	Right Front Frame Mount
20	3/8"-16 x 1-1/4" Grade 8 Bolt
28	3/8" USS Gr8 Flat Washer
8	3/8"-16 Gr 8 Nut
20	3/8" Gr 8 Lock Washer
2	1/2" - 13 x 1-1/2 GR8 Bolt
1	1/2" Left Z-nut with Weld Nut
1	1/2" Right Z-nut with Weld Nut
2	1/2" USS GR8 washers
2	1/2" GR8 Lock Washers
4	M8 Push-nut/Washer
18	M8 x 30mm 1.25 - Flange Bolt
4	M8 Rivet Nuts (2 spare)
18	M8 x 1-1/4" OD x 1/8" Thick Fender Washer
32	1/4"-20 x 5/8" Button Head 18-8 SS Blk Oxide Coated
32	1/4"-20 Nylon Insert Flange Lock Nut Steel Zinc

Tools Required
Metric Tools
12mm Swivel or U-Joint Socket
SAE Tools
17/32" Drill Bit (STF1115)
Drill
M8 Rivet Nut Tool (STF1112)
Pry bar or flathead screw driver

QTY	Part No.	Recommended OEM Parts
1	75860-60040	Cover, Rocker Panel, LH, 200 Series
1	75850-60040	Cover, Rocker Panel, RH, 200 Series
16	76924-13020	Clip, Rocker Panel, 200 Series

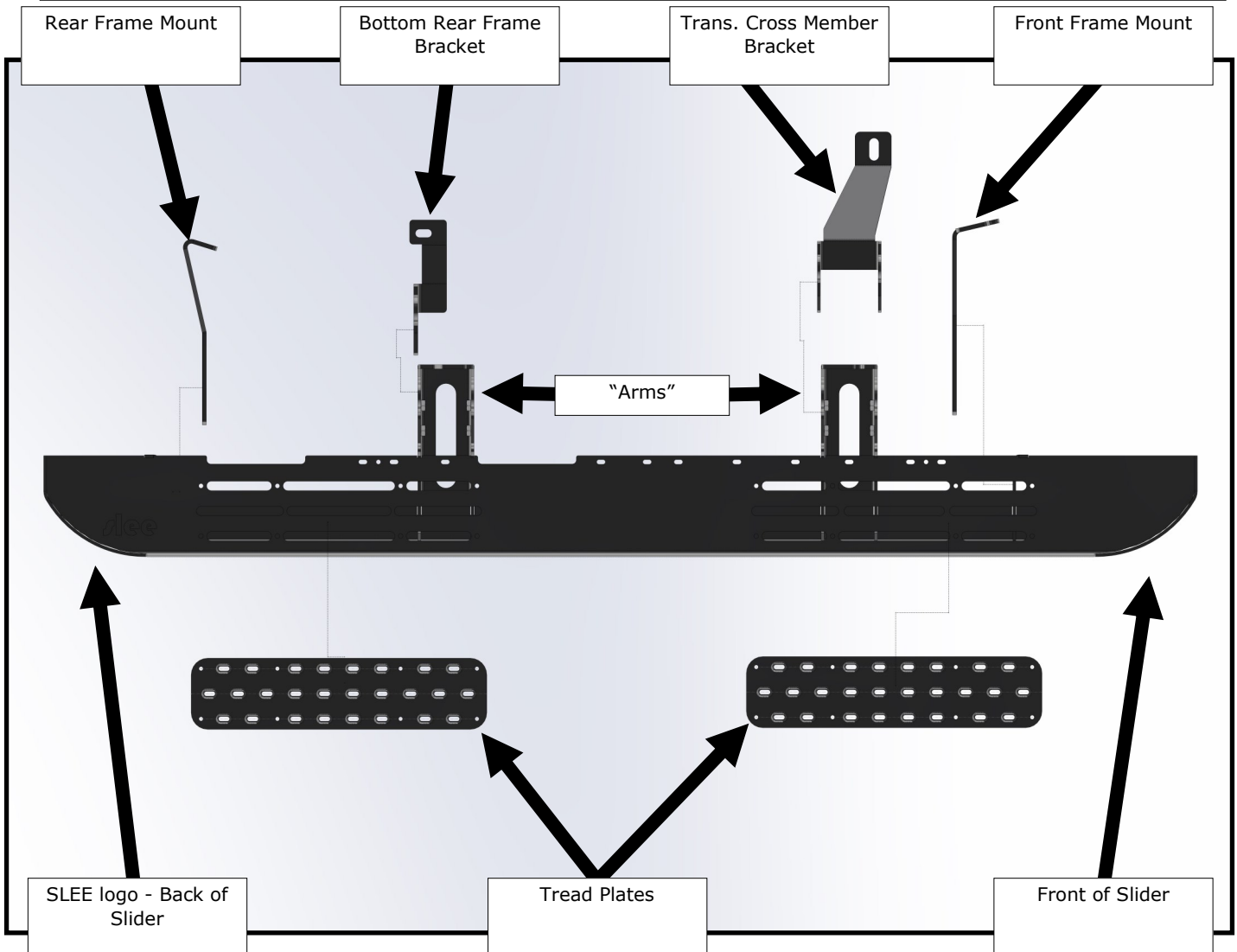
**NOTE:** The Slee SOK1329 Formed SliderSteps contains instructions and hardware for installation onto the 2008-2021 LX570.

These instructions do not apply to the 2008-2021 200 Series Land Cruiser. For Toyota Land Cruiser applications, please consult the instructions included with the SOK2005.



### Slider Assembly

(Passenger Side Shown, Driver Side Symmetrical)





**1** Gather and organize all installation hardware before starting.

Account for all items pictured on the previous page for the Driver and Passenger side.



Step 1: remove factory running board and associated pieces

**2** Unplug the driver and passenger running board light harnesses from the truck. Remove running boards and tubular guards from both sides of the truck.

Remove the running board light harnesses from each unit, they will be needed later if installing the optional lighting kit.



Step 2: Prep for Rivnut installation

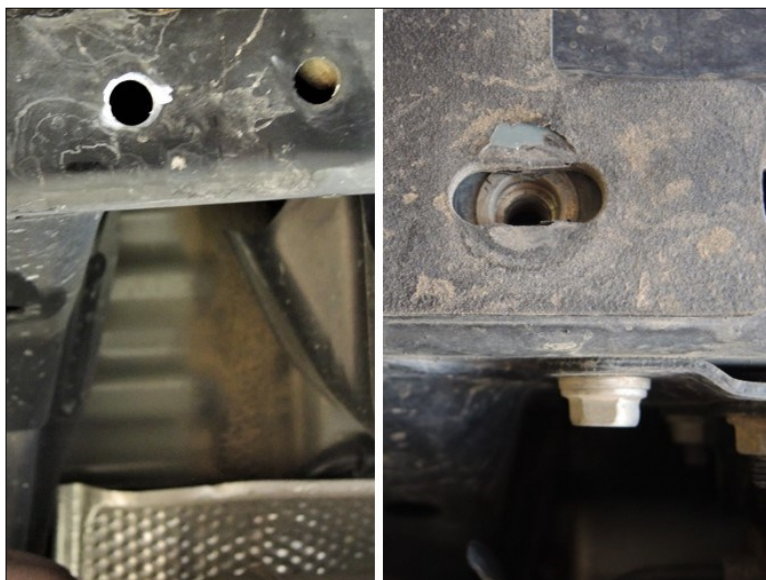
**3** Install supplied Rivnut into the hole on the bottom of the driver side frame rail.

This is the same hole used on the passenger side for the Bottom Rear Frame Bracket that is sandwiched between the gas tank skid and frame. (see step 7 photo if needed)

**Hint:** If needed, temporarily place slider to locate hole.

**Hardware:**

(1) M8 Rivnuts



Step 3: Install Rivnut

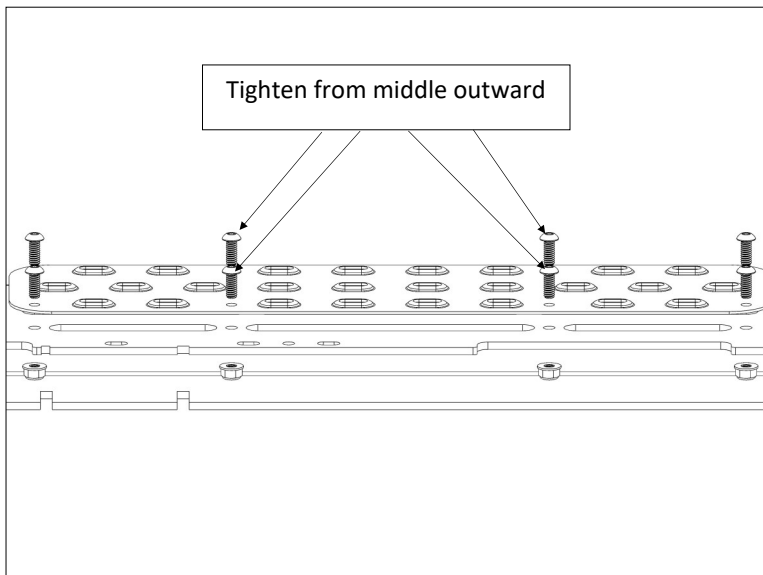
**4** Prepare the sliders. Place slider step plates onto the matching locations.  
Install all the hardware in the holes before tightening.

**Hint:**

Tighten the middle bolts first and work outwards. This will help the step plates to remain flat on top of the slider.

**Hardware:**

- (32) 1/4-20 x 5/8" Button Head Screws
- (32) 1/4-20 Nylock Nuts



Step 4: install step plates onto the slider

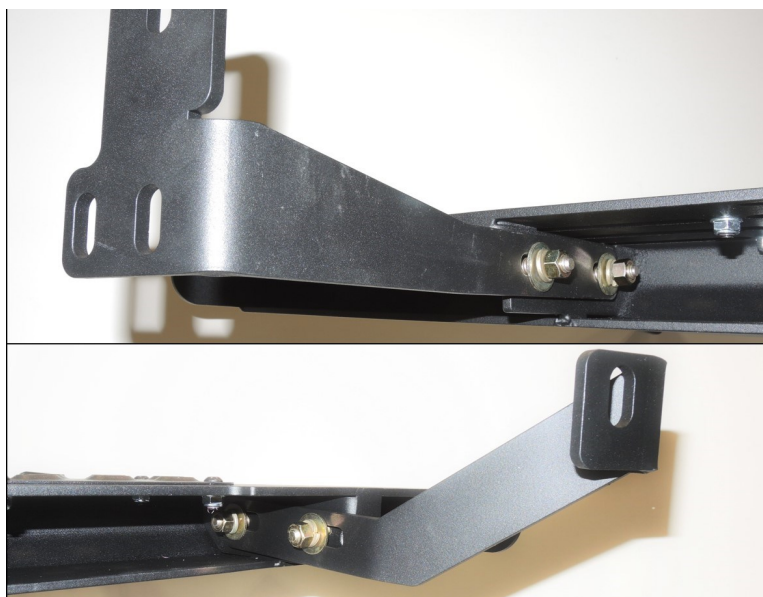
**5** Install the front and rear mounting brackets onto the sliders  
The front and rear mounts should be bolted to the inside faces of the brackets on the slider

**Hint:**

Do not tighten completely at this time. These will be tightened after final alignment on truck.

**Hardware:**

- (8) 3/8-16 x 1-1/4" GR8 Bolts.
- (16) 3/8 Flat Washers
- (8) 3/8 lock Washers
- (8) 3/8-16 GR8 Nuts



Step 5: Install front and rear mounting brackets

**6** If fitting the optional LED slider light (SOK0082,) install them now. Consult the instructions included with the SOK0082 kit.



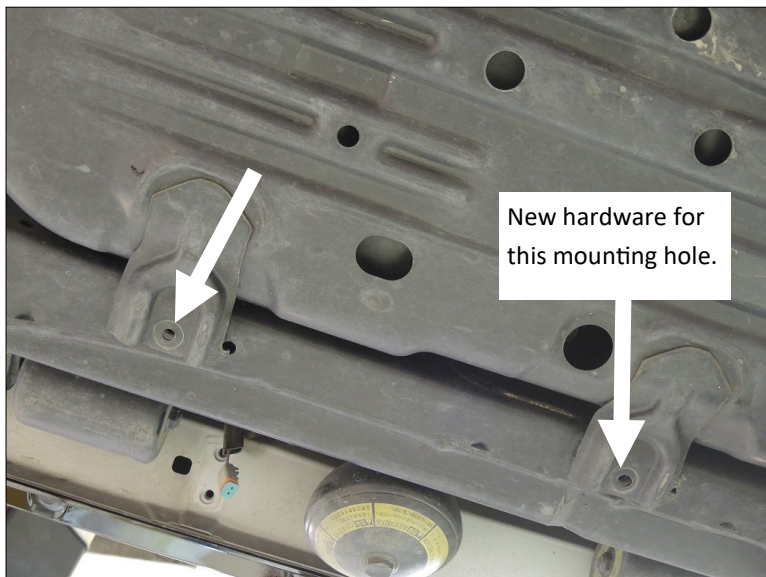
Fit the optional SOK0082 kit at this time if desired. (Step 6)



**7** Remove the two M8 bolts holding the gas tank skid plate to the bottom of the frame.

**Hint:**

New hardware is supplied for reattaching the gas tank skid plate where the slider interferes.



Step 7: Remove two gas tank skid bolts

**8** Install the new OEM rocker covers onto the LX570 at this time.

**Hint:** We do not recommend cutting the factory LX570 rocker panel, but it can be done in leu of using a 200 LC rocker.

**Hardware:**

\*\*\*Customer purchased rocker covers and associated retaining hardware.



Step 8: Install OEM 200 series rocker covers

**9** Place the Z-nuts inside the transmission cross member. Both sliders require a Z bracket nut plate to be installed.

**Hardware:**

- (1) 1/2" left Z-nut
- (1) 1/2" Right Z-nut



Step 9: Place Z-Nuts inside the trans cross member

**10** Assemble the 4 bolts used for the upper frame mounting locations.

**Hint:** The push nut is used to make initial slider placement easier. Make sure that the washer is pushed against the head of the bolt as tightly as possible.

**Hardware:**

- (4) M8 x 30mm 1.25 - Flange Bolt (\*\*or 3/8)
- (4) Push Nuts (\*\*or 3/8)
- (4) M8 x 1-1/4" OD x 1/8" Fender Washer (\*\*or 3/8)

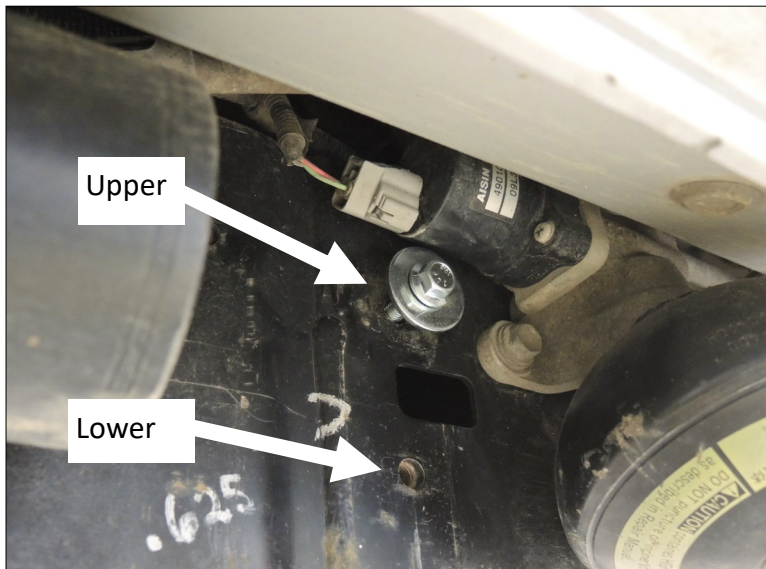


Step 10: Assemble frame bolt, washer, and pushnut

**11** Thread in the 4 upper mounting bolts that were prepared in step 10

Thread in about 10mm of the frame mounting bolts: 2 upper bolts on the drivers side and 2 upper bolts on the passenger side.

**Hint:** These bolts will be used to “hang” the slider before installing the rest of the mounting hardware.



Step 11: install upper frame mounting hardware

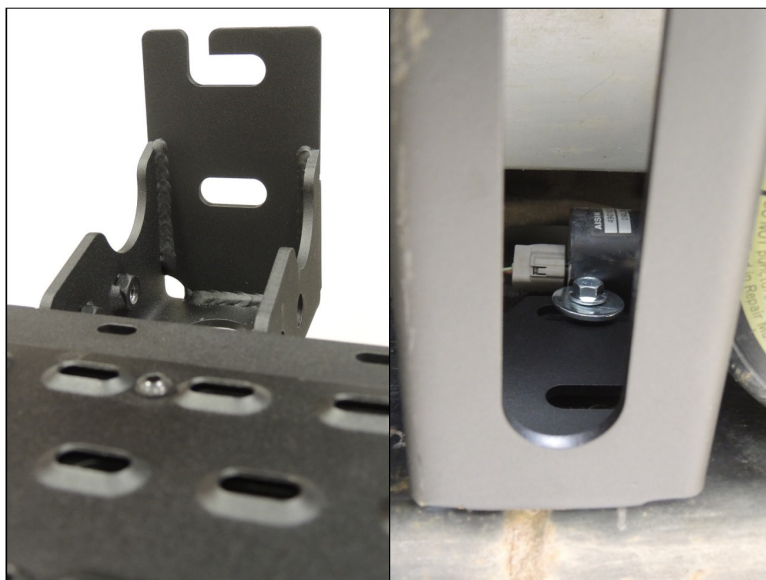
**12** “Hang” the slider on previously installed frame bolts.

Use the opening in the top slot. Push the slider upwards and then over to make sure the slider is resting on the bolt.

While the slider is supporting itself, **loosely install the lower frame bolts and washers.**

**Hardware:**

- (4) M8 x 30mm 1.25 - Flange Bolt
- (4) M8 x 1-1/4" OD x 1/8" Fender Washer



Step 12: Hang the slider on the upper frame bolts



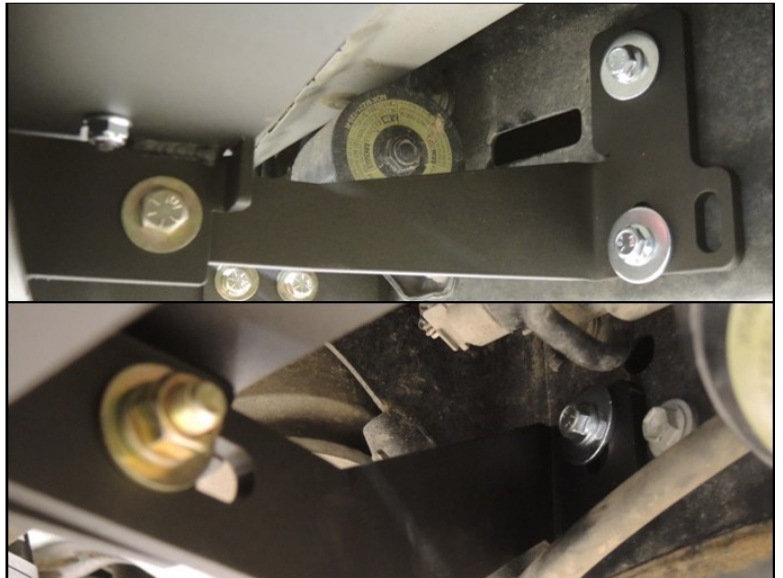
# 13

install frame hardware for the front and rear frame brackets

Loosely install the frame hardware for the front and rear frame brackets.

### Hardware:

- (6) M8 x 30mm 1.25 - Flange Bolt
- (6) M8 x 1-1/4" OD x 1/8" Fender Washer



Step 13: Mount the slider

# 14

Position the slider, and tighten frame hardware.

Position the slider. Ensure that there is at least a 3/8 gap between the slider and the body. Check that the slider is parallel with the rocker panel front to back.

Start tightening the slider to the frame working from the center then the front and back.

**Hint:** The upper frame bolts are tough to get to. A short swivel socket is very helpful. Pictured is a Gear Wrench P/N: 80258 12mm swivel (U-Joint) socket for metric hardware, P/N: 80268 9/16in for SAE hardware.



Step 14: Use a short swivel and extension for these bolts

# 15

Install the Bottom Rear Frame Bracket and the Trans. Cross Member bracket.

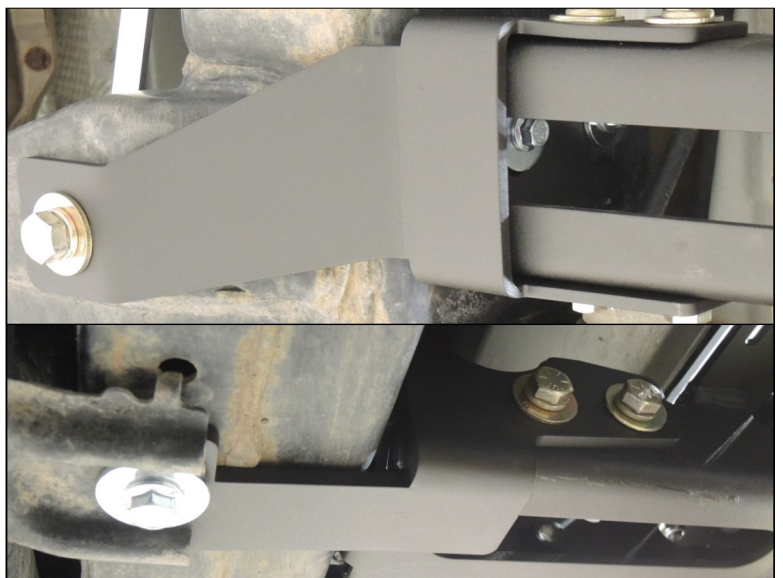
**Trans Cross Member Bracket:** Thread all bolts in. Tighten the 1/2" bolt first. Then tighten the 3/8" bolts.

**Bottom Rear Frame Bracket:** Thread all bolts in. Tighten the frame M8 bolt first. Then tighten the 3/8" bolts. Bracket is sandwiched between gas tank skid and frame.

**Hint:** If obtaining alignment is difficult, loosening the previously installed slider hardware may be necessary.

### Hardware:

- (12) 3/8"-16 x 1-1/4" Grade 8 Bolt
- (12) 3/8" USS Gr8 Flat Washer
- (12) 3/8" GR8 lock washers
- (2) 1/2" -13 x 1-1/2 GR8 Bolt
- (2) 1/2" USS GR8 washers
- (2) 1/2" GR8 Lock Washers



Step 14: slider between gas tank skid and frame rail



# 15

Check Slider alignment and hardware.

Tighten the 3/8" hardware on the front and rear frame brackets that attach the brackets to the slider.

Check that that the slider is parallel with the rocker from front to back.

Check that there is at least 3/8" clearance all around the slider.

Check that all the hardware is tight



Step 15: Ensure all hardware is installed



Step 15: Ensure proper clearances (no rubbing)



Step 15: Tighten all hardware