



700 Pine Ridge Road Golden CO 80403 Tel (303) 278 8287 1(888) 4X4 SLEE Fax (303) 278 7182

Slee Off-Road – [LX600 Skid Plate System] (SOK2094—SOK2090) – Installation instruction 1
Preliminary



For Complete Instructions,
scan QR code for media
page.



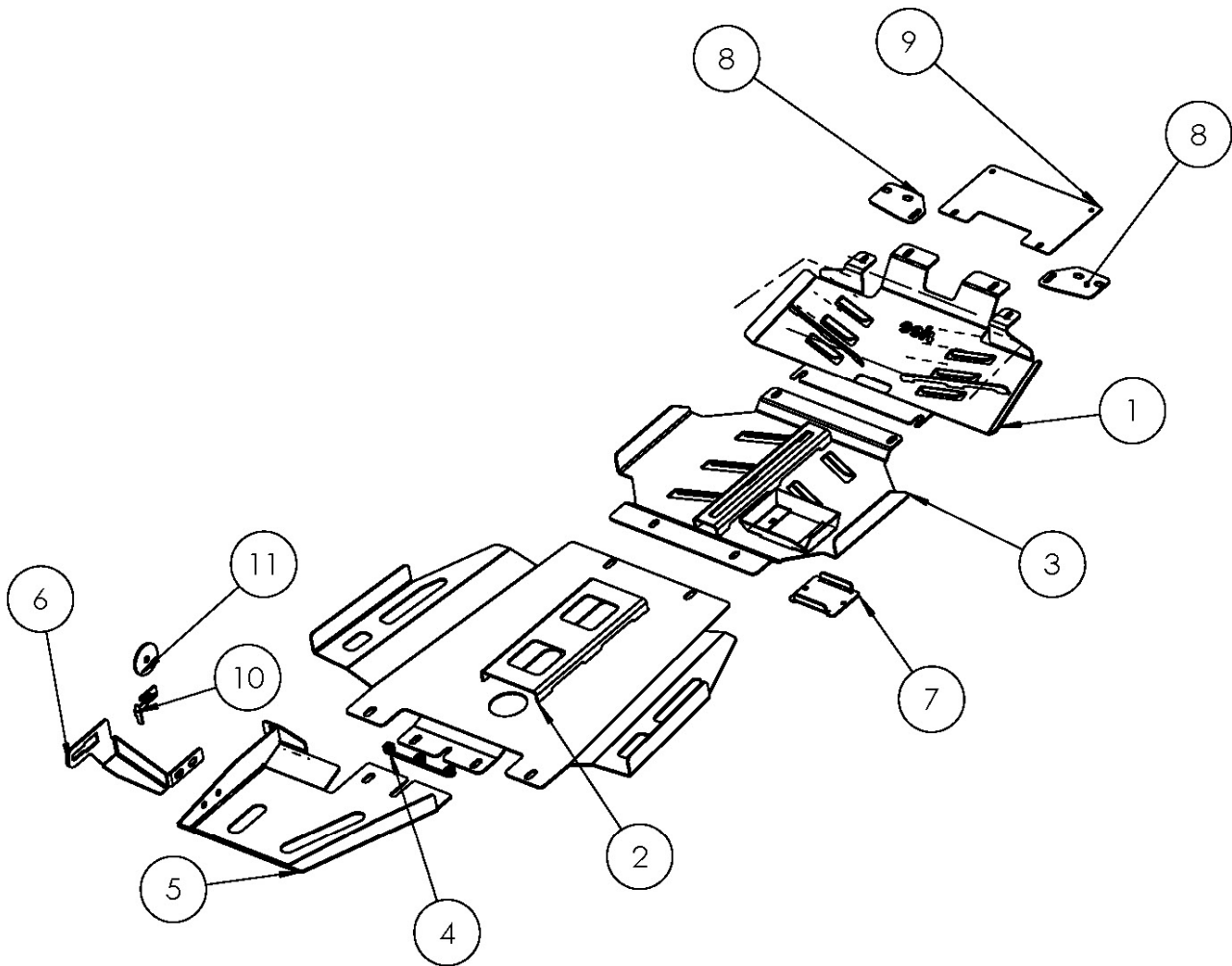
**For
Lexus LX600**

Thank you for your purchase from Slee Off-Road! If you should you have any questions or concerns, please do not hesitate to contact us immediately at 1 888 4X4 SLEE or at sales@sleeoffroad.com.

Slee Off-Road strives to provide comprehensive installation instructions. However, in some circumstances minor inconsistencies may be encountered with instructions and or provided parts. If you encounter such an inconsistency, please notify us, as your input is important.

Slee Off-Road guarantees all parts free from defects for one year from the original purchase date. Slee Off-Road and Slee & Co under no circumstances will be held liable for any damages or injuries to the users of this product(s) and or their equipment as a result of the use of this information or parts obtained from Slee Off Road.

ITEM NO.	PART NAME	QTY.
1	FRONT SKID PLATE	1
2	TRANSMISSION SKID PLATE	1
3	ENGINE SKID PLATE	1
4	3 NUT PLATE	1
5	TRANSFERCASE SKID PLATE	1
6	TRANSFER CASE GUSSET	1
7	OIL COVER PLATE	1
8	FRONT SKID TAB MNT	2
9	AIR BLANK OFF	1
10	FRAME NUT 2	1
11	SPACER-WASHER	1



PROPRIETARY AND CONFIDENTIAL
 THE INFORMATION CONTAINED IN THIS DRAWING IS THE SOLE PROPERTY OF SLEE OFF-ROAD. ANY REPRODUCTION IN PART OR AS A WHOLE WITHOUT THE WRITTEN PERMISSION OF SLEE OFF-ROAD IS PROHIBITED.

DESCRIPTION: **BOLT ON PROTECTION**
 PART NUMBER: **SFP2090**
 PART NAME: **LX600 SKID SYSTEM**



Slee Off-Road – [LX600 Skid Plate System] (SOK2094—SOK2090) – Installation instruction 3

QTY	Parts Included	Torque Spec
1	Front Skid Plate	
1	Transmission Skid Plate	
1	Engine Skid Plate	
1	Nut Plate with 3 Nuts	
1	Transfer Case Skid Plate	
1	Transfer Case Gusset	
1	Oil Drain Cover Plate	
2	Front Skid Plate Tab	
1	Air Blank Off Plate	
1	Frame Nut Plate	
1	3" OD Large Washer	
9	Aluminum Bolt Head Protection Washers	
2	6" Stick Nut 3/8"	
1	1/2" - Lock Washer - grade 8 zinc yellow	
3	1/2" x 1-1/2" - Hex Bolt - grade 8 zinc yellow	80 ft.lb
4	1/2" - Washer - SAE grade 8 zinc yellow (smaller)	
2	1/2" - Lock Nut - grade 8 zinc yellow	
5	3/8" - Washer - SAE grade 8 zinc yellow	
7	3/8" x 1-1/2" - Hex Bolt - grade 8 zinc yellow	30 ft.lb
4	3/8" - Washer - USS grade 8 zinc yellow (larger_)	
2	3/8" - Lock Nut - grade 8 zinc yellow	
2	3/8" x 1-1/2" - Flat Countersunk Bolt - zinc clear	20 ft.lb
2	Snap-in Nut Steel, 3/8" Thread Size	
2	M10 x 30mm - Flange Bolt - [1.25 pitch] class 8.8 zinc clear	50 ft.lb
2	M8 x 40mm - Flange Bolt - [1.25 pitch] class 10.9 zinc clear	25 ft.lb

Tools Required
Metric Tools
SAE Tools



For Complete Instructions, scan QR code for media page.

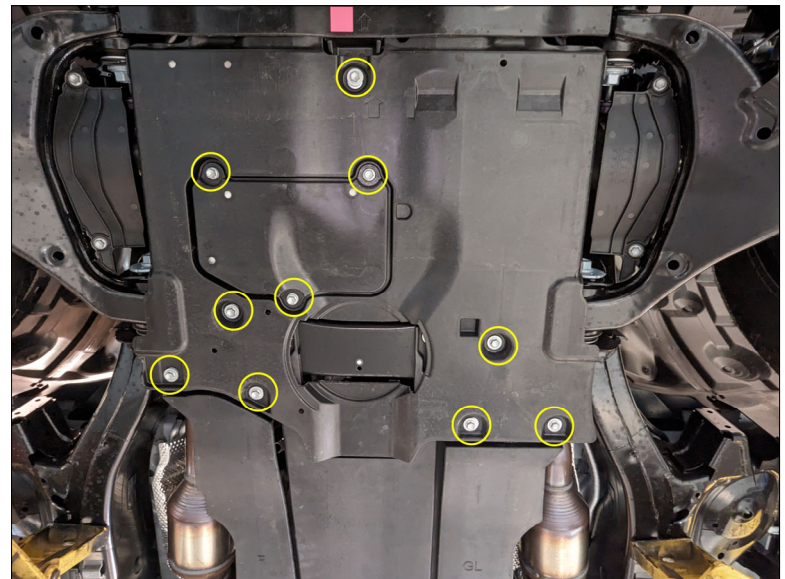
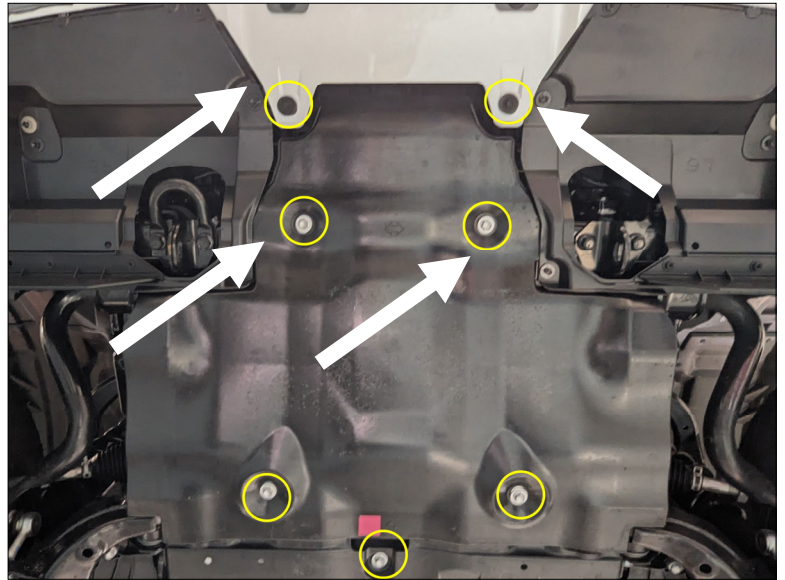
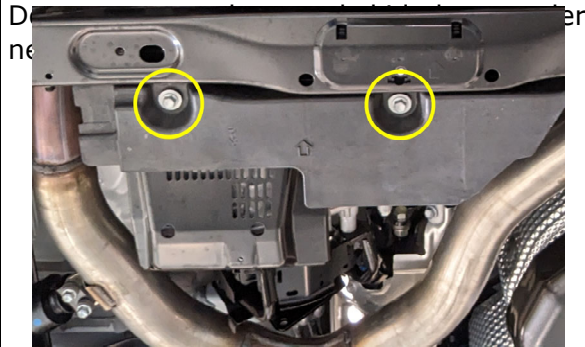
01 Make sure all parts for the kit are present. Refer to the diagram and Bill of Materials on pages 2 and 3.

Hint: Refer to the Drawing on page 2 and Rendering on the last page for more details on how the system fits together. This will help with identifying the parts and their locations.

Remove all the factory plastic skid plates. Remove all the bolts as circled

Also remove the plastic blank off plate on the transmission cross member.

Retain the hardware indicated with the arrows. These will be re-used

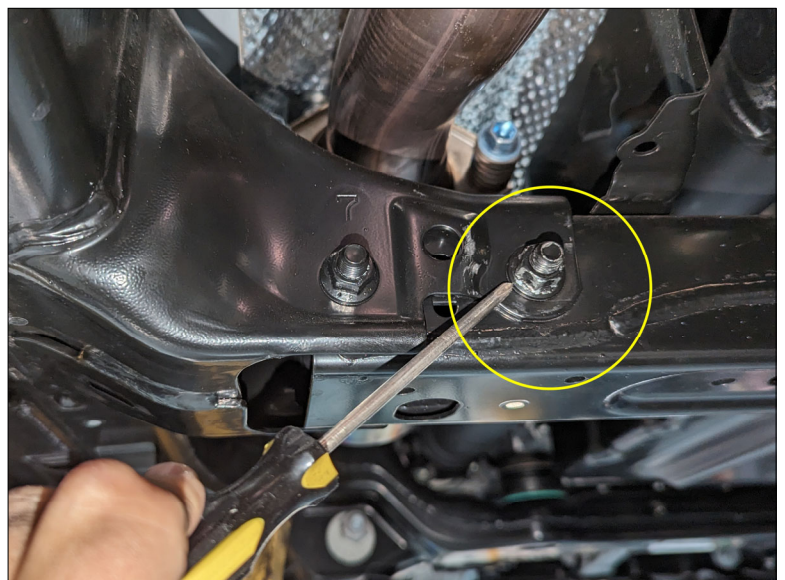


(Step 1) Factory protection plates. Circles indicate hardware to re-

02 Installation of the Slee skid plates are done starting at the back of the vehicle and moving forward.

Start by removing the innermost of the two nuts where the transmission cross member bolts to the frame on the driver side. This is done on the driver side only.

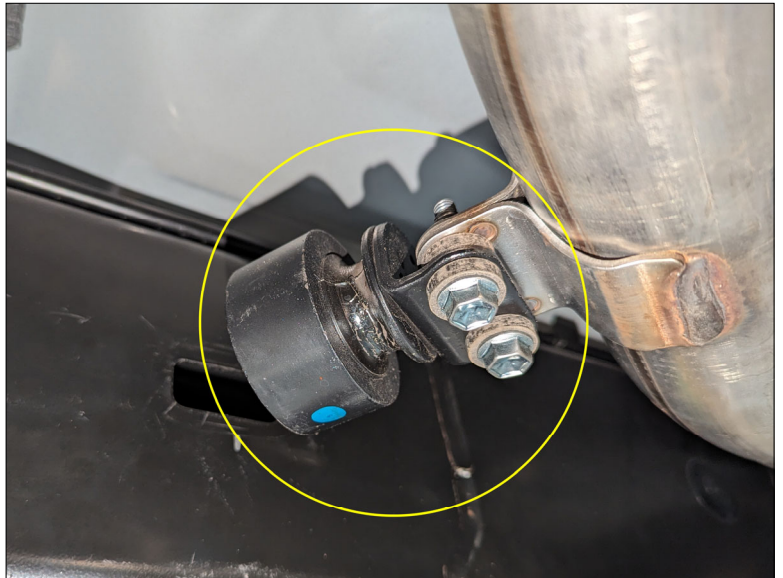
Retain the nut to be re-installed later. Leave the bolt in place.



(Step 2) Remove nut as shown

03 Remove vibration damper from exhaust bracket.

Retain to be re-installed later.



(Step 3)Exhaust Vibration Dampner

04 The **Transfer Case Gusset** installs against the frame utilizing the **Frame Nut Plate** that installs into the rectangular frame opening.

Hold the **Transfer Case Gusset** against the frame and insert the **Frame Nut Plate** into the rectangular hole as show. The **Frame Nut Plate** is first into the hole and then pulled back to seat against the inside of the frame.

Hint: This might require some help from another person to hold the parts in place or use a clamp to hold the bracket against the frame.

Hardware:

- 1 - Frame Case Gusset
- 1 - Frame Nut Plate



(Step 4) Transfer Case Gusset against frame with Frame Nut Plate

05 Now use the 1/2" x 1.5" bolt with lock washer and the large **3" OD Large Washer** to secure the bracket to the frame. Thread the bolt into the captive threads on the **Frame Nut Plate**.

HINT: Do not tighten at this point.

Hardware:

- 1 - 1/2" x 1.5" - Hex Bolt - grade 8 zinc yellow
- 1 - 1/2" Lock Washer
- 1 - 3" OD Large Washer



(Step 5) 3" washer is used to clamp the gusset to the frame

06 Next insert the **3 Nut Plate** into the inside of the transmission cross member. The photo shows the orientation of the nut plate once installed. The straight edge would face towards the back of the truck and the nuts should be away from the bottom of the cross member.

If you did not remove the blank off plastic cover in step 1, remove it now.

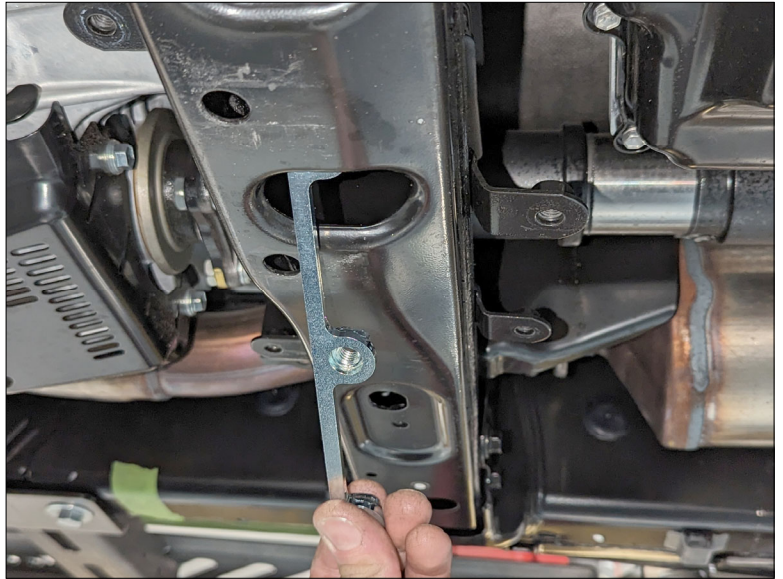
Hardware:

1 - Nut Plate with 3 Nuts



(Step 6) - 3 Nut Plate Orientation

07 To insert the **3 Nut Plate** feed the plate into the cross member through one of the large openings. Then locate the plate with the nuts lining up with the three holes in the cross member.



(Step 7) Feeding 3 Nut Plate into cross member.

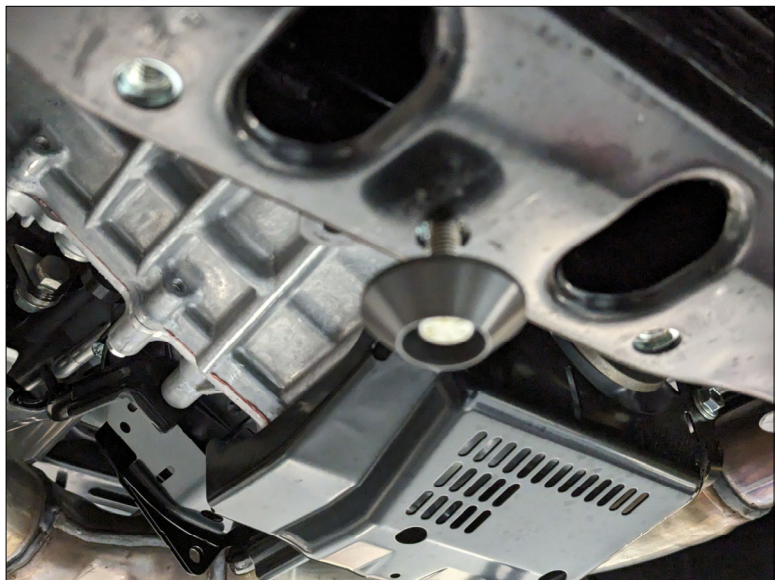
08 Tread one of the 3/8" bolts with flat washer and **Bolt Head Protection Washer** into the center nut of the **3 Nut Plate**. Leave about 1" of tread showing on bolt.

Hardware:

1 - Bolt Head Protection Washer

1 - 3/8" x 1-1/2" - Hex Bolt - grade 8 zinc yellow

1 - 3/8" - Washer - SAE grade 8 zinc yellow



(Step 8) Center bolt treaded into nut plate

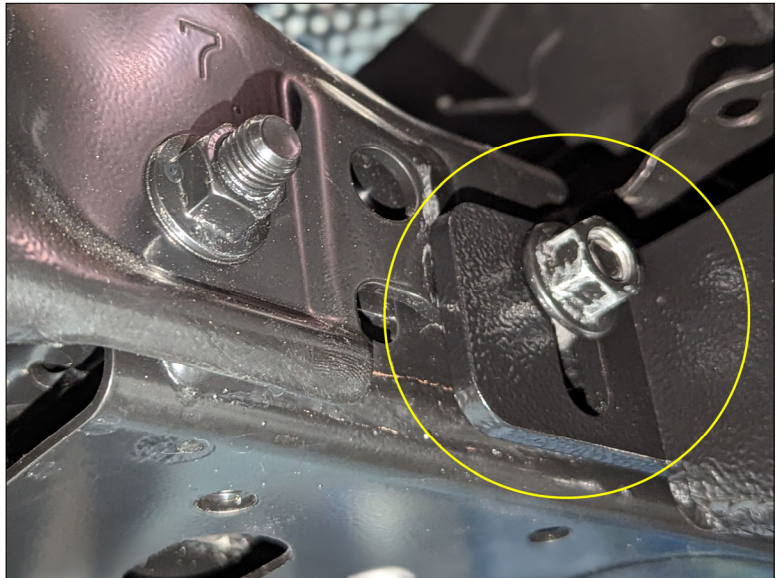
09 The front edge of the **Transfer Case Skid Plate** will slide above the **Bolt Head Protection Washer** installed in Step 8. Line the slot up with the bolt and at the same time make sure on the tab on the driver side front lines up with the cross member bolt. (Nut removed in step 2)

Support the skid plate in place with a jack or helping friend.

Re-install the nut that was removed in Step 2 and hand tighten.

Hardware:

1 - OE Nut removed in Step 2



(Step 9) - Transfer Case Skid installed with nut re-installed

10 With the plate supported align the **Transfer Case Gusset** with the side holes on the Transfer Case Skid Plate and use the 1/2" bolts, washers and lock nuts to attach. Install bolts from outside with flat washer on both sides and lock nut on the inside.

Hand tighten at this point

Hardware:

2 - 1/2" x 1-1/2" - Hex Bolt - grade 8 zinc yellow

4 - 1/2" - Washer - SAE grade 8 zinc yellow

2 - 1/2" - Lock Nut - grade 8 zinc yellow



(Step 10) Transfer Case Gusset attached to Transfer Case Skid

11 Now slide the rear edge of the **Transmission Skid Plate** under the center bolt installed in step 8. The center slot will align with the bolt. Make sure the **Transfer Case Skid Plate** is above the lip of the **Transmission Skid Plate**.

Support skid plate in place with a jack or helping friend.



(Step 11) Transmission skid plate installed under Transfer Case Skid

12 Temporarily install one of the M10 x 30mm Bolts and bolt protection washer into one of the front holes on the front edge of the **Transmission Skid Plate**.

Thread into the existing captive nut on the cross member.

This will keep the skid palte in place.

Hardware:

- 1 - Bolt Head Protection Washer
- 1 - M10 x 30mm - Flange Bolt

13 Install the rest of the hardware on the interface of the **Transfer Case Skid Plate** and **Transmission Skid Plate**. Use the supplied 3/8" bolts with washers and bolt protection washers. Install two bolts on either side of the center bolt installed in step 8. Hand tighten at this point.

Hardware:

- 2 - Bolt Head Protection Washer
- 2 - 3/8" x 1-1/2" - Hex Bolt - grade 8 zinc yellow
- 2 - 3/8" - Washer - SAE grade 8 zinc yellow

14 The two outer tabs on the **Transmission Skid Plate** will be bolted down using a 3/8" bolt, washer and **Bolt Protection Washer** threaded into a stick nut.

On each side of the cross member feed the **6" Stick Nut** into the opening on the cross member so that the nut aligns with the hole and slot in the plate. Thread the 3/8" bolt into the stick nut though the slot in the plate.

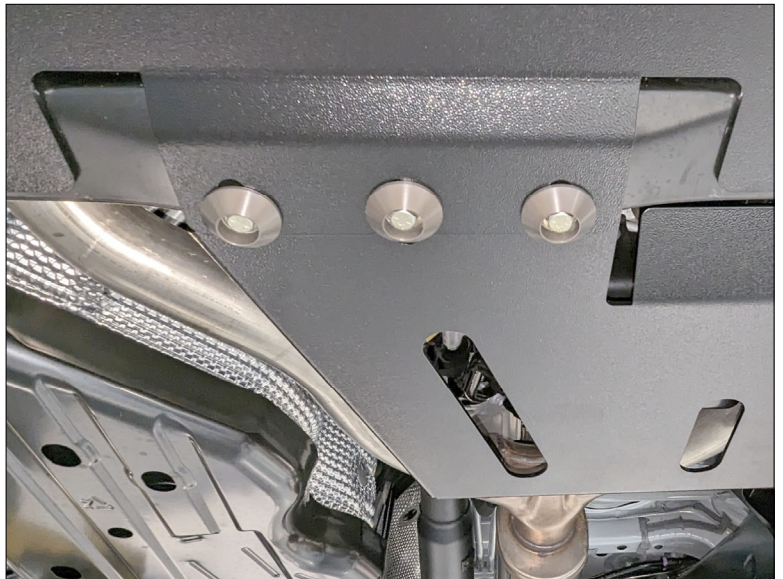
Hint: It might be necessary to bend the stock nut slightly to get it into position.

Hardware:

- 2 - Bolt Head Protection Washer
- 2 - 3/8" x 1-1/2" - Hex Bolt - grade 8 zinc yellow
- 2 - 3/8" - Washer - USS grade 8 zinc yellow
- 2 - 6" Stick Nuts



(Step 12) Bolt Protection Washer and M10 bolt installed on front of skid



(Step 13) Additional hardware installed.

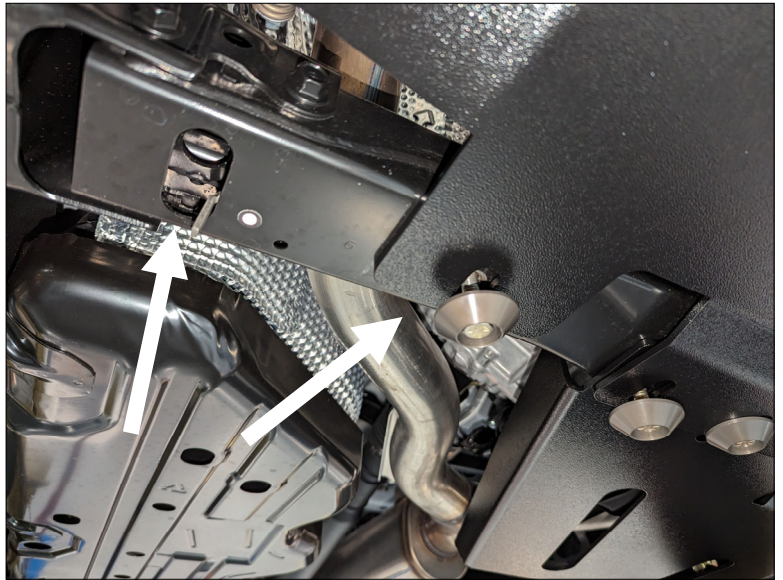


(Step 14) This shows the orientation of stick nut.

15 Install a stick nut with hardware on both the driver and passenger side of the cross member.

Hint: Now is a good time to snug up the rear hardware. This will keep the skid plate in place to install the next plate.

The white arrows show the “tail” position of the stick nut as well as the 3/8” bolts that was treaded into the stick nut.



(Step 15)

16 The photo on the right shows all the hardware installed for the interface between the rear of the **Transmission Skid Plate** and the **Transfer Case Skid Plate**



(Step 16) All hardware installed.

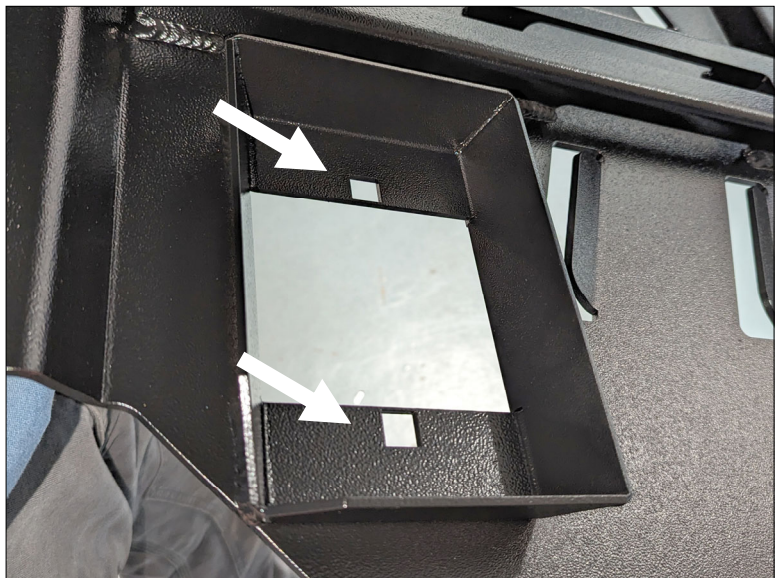
17 Install the two 3/8” clip nuts into the square openings on the oil catch pan in the **Engine Skid Plate**.

The arrows indicate the locations. Install with the nut on the top side of the skid plate.

Hint: The oil catch pan area will help with catching oil when draining engine oil.

Hardware:

2 - Snap-in Nut Steel, 3/8' Thread Size



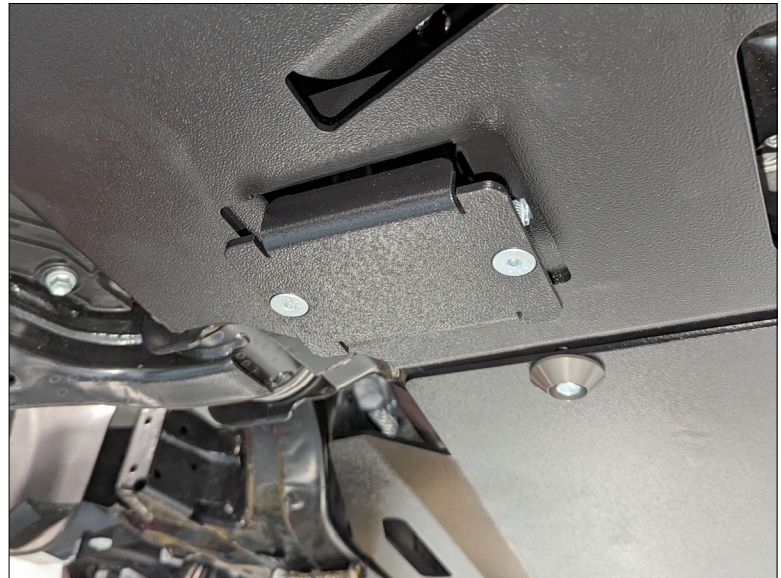
(Step 17) Locations for clips nuts

18 Install the **Oil Drain Cover** on the **Engine Skid Plate** using the 3/8" countersunk Bolts

Tighten until snug.

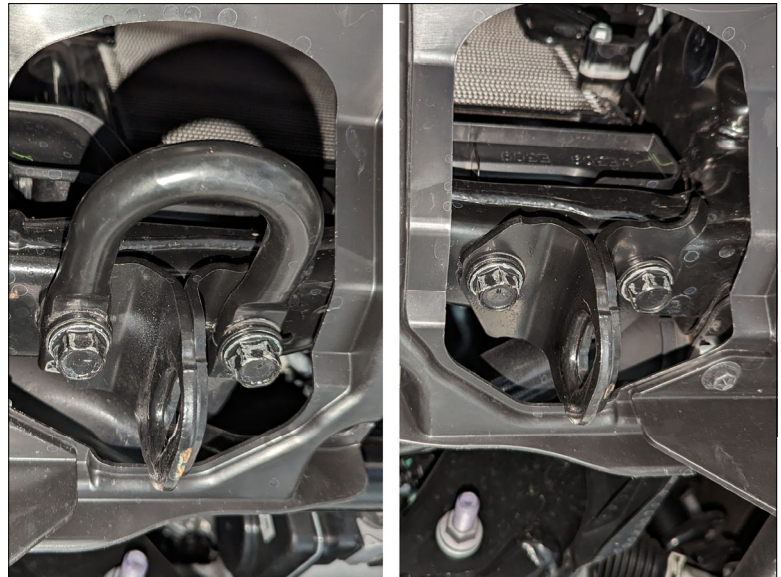
Hardware:

2 - 3/8" x 1-1/2" - Flat Countersunk Bolt - zinc clear



(Step 18) Oil Drain Cover

19 Remove the driver and passenger side front tow hooks. Do not discard.



(Step 19) Drive and Passenger side Tow Points

20 Install the two **Front Skid Plate Tabs**. The mounts sandwich between the tow points (removed in step 20) and the frame.

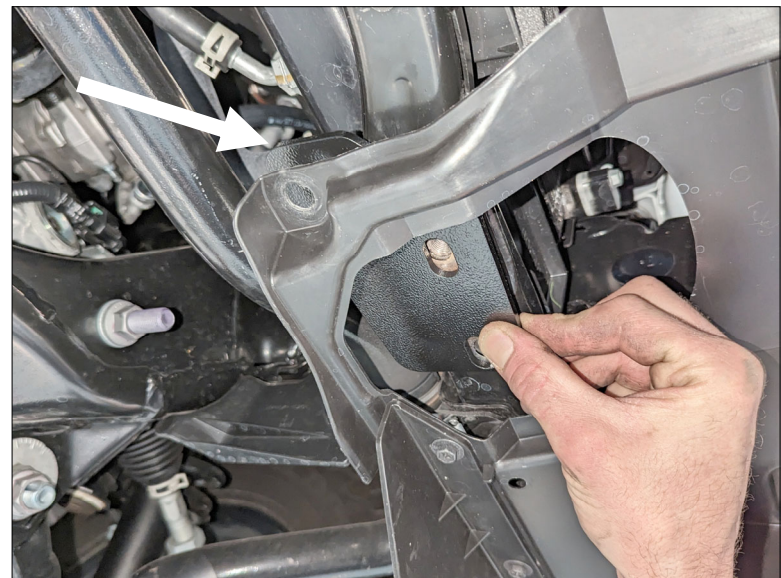
The tab is installed with the holes lining up with the tow hook mount nuts and the rearmost hole with the hole on the plastic protection plate.

Reinstall the tow hook with the original hardware.

Repeat on both sides.

Hardware:

2 - Front Skid Plate Tabs



(Step 20) Front Skid Plate Tabs.

21 Remove the bolt and washer installed in Step 12. It will be re-installed to secure the two plates.

Install **Engine Skid Plate** by sliding the rear edge underneath the **Transmission Skid Plate** front edge. Support skid plate in place.

Install the M10 x 30 bolts with **Bolt Protection Washers** to clamp the Transmission Skid Plate and Engine Skid Plate to the cross member.

Install two M8 x 40 bolts with **Bolt Protection Washers** on the front two holes of the skid plate temporarily to keep the plate in place.

Hint: Hand tighten M10 bolts at this time.

Hardware:

- 3 - Bolt Head Protection Washer
- 1 - M10 x 30 Bolt
- 2 - M8 x 40 Bolt

22 The **Front Skid Plate** installs with the front outside tabs underneath the plastic protection plate, but below the tabs installed in step 20.

The rear flange of the **Front Skid Plate** sandwiches the front flange of the **Engine Skid Plate**. Remove the M8 bolts installed in step 18.

With plate is in position, re-install the M8 bolts with protection washers and hand tighten

Use the 3/8" bolts, large 3/8" washers and lock nuts to attach the plate to the **Front Skid Plate Tabs** installed in Step 20.

Hint: Do Not overtighten these bolts as it may crush the plastic protection plate.

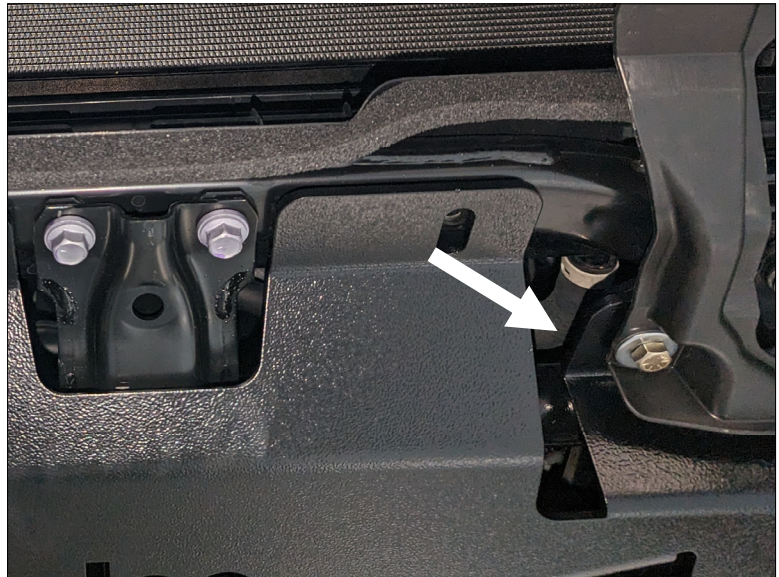
Slide the Air Blank Off Plate between the front bumper tabs and brackets and underneath the front flanges of the **Front Skid Plate**. Use the OE hardware removed in Step 1 to attach the front tabs of the **Front Skid Plate** and the **Air Blank Off Plate**

Hardware:

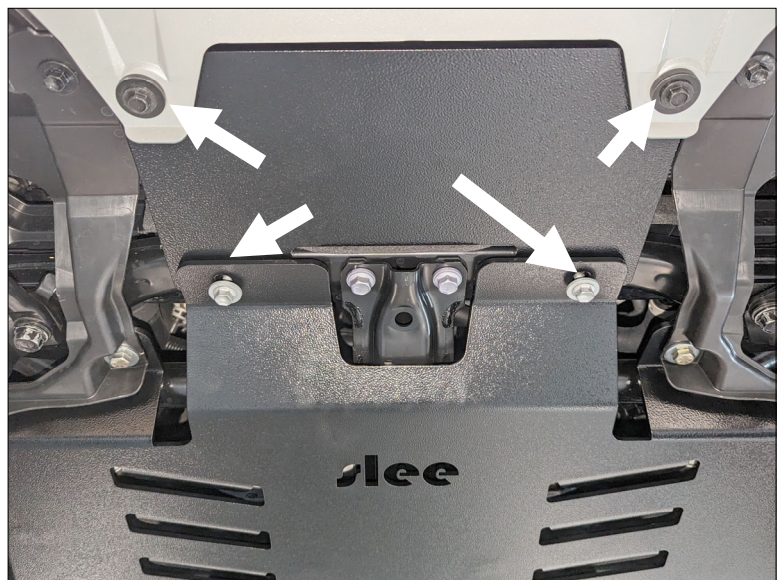
- 2 - 3/8" x 1-1/2"-Hex Bolt-gr 8 zinc yellow
- 4 - 3/8" - Washer - USS gr 8 zinc yellow
- 2 - 3/8" - Lock Nut - gr 8 zinc yellow



(Step 21) M10x 30 mm bolts with protection washers installed.



(Step 22) FrontSkid Plate attached to Front Skid Tabs



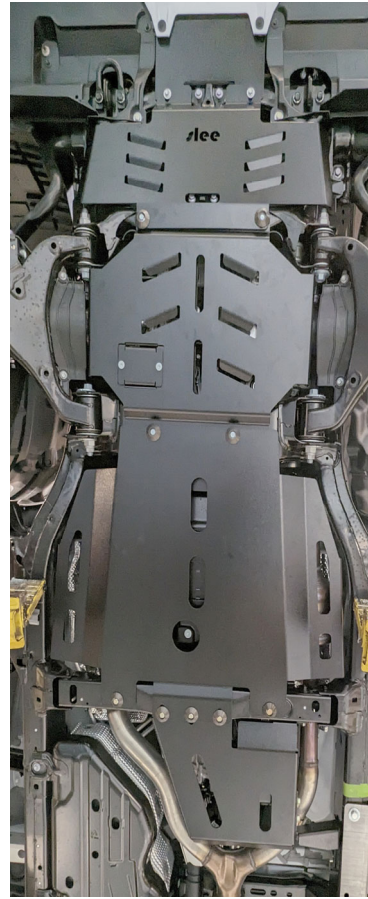
(Step 22) Arrows indicate re-used OE hardware locations

23 The installation is now complete.

Torque all bolts to spec. Torque specs are shown on the Bill Of Materials

IMPORTANT: Re-Install the vibration damper removed in Step 3

The completed installation should look like the photograph to the right.



(Step 23) Completed Install

Rendering of Skid Plate System

