



700 Pine Ridge Road Golden CO 80403 Tel (303) 278 8287 1(888) 4X4 SLEE Fax (303) 278 7182

## Slee Off-Road – [2nd Gen Tacoma Compressor Bracket] (SOK0002) – Installation instruction 1



Thank you for your purchase from Slee Off-Road! If you should you have any questions or concerns, please do not hesitate to contact us immediately at 1 888 4X4 SLEE or at [sales@sleeoffroad.com](mailto:sales@sleeoffroad.com).

Slee Off-Road strives to provide comprehensive installation instructions. However, in some circumstances minor inconsistencies may be encountered with instructions and or provided parts. If you encounter such an inconsistency, please notify us, as your input is important.

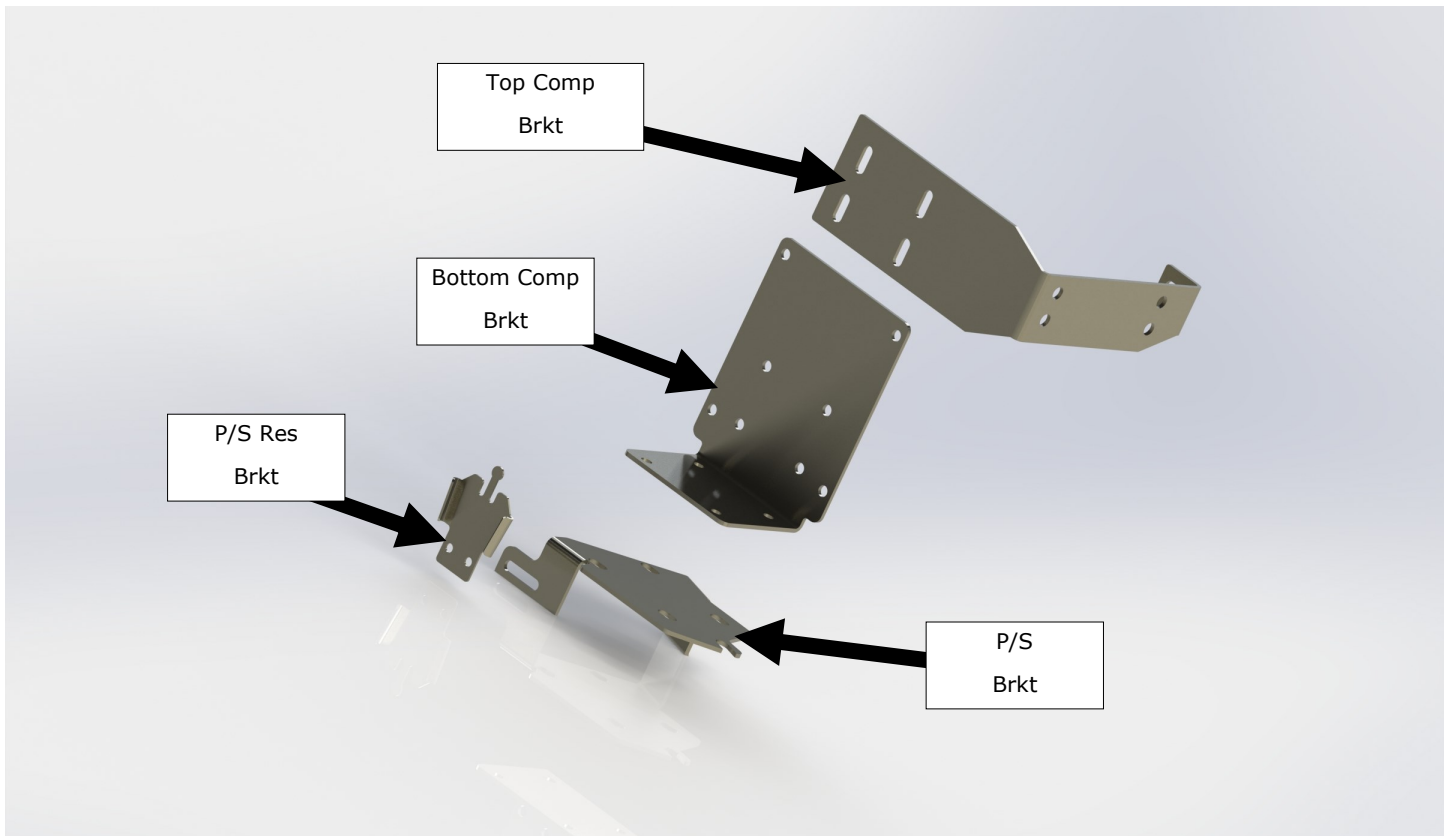
Slee Off-Road guarantees all parts free from defects for one year from the original purchase date. Slee Off-Road and Slee & Co under no circumstances will be held liable for any damages or injuries to the users of this product(s) and or their equipment as a result of the use of this information or parts obtained from Slee Off Road.

## Slee Off-Road – [2nd Gen Tacoma Compressor Bracket] (SOK0002) – Installation instruction 2

QTY	Parts Included
1	Top Compressor Bracket
1	Bottom Compressor Bracket
1	Power Steering Reservoir Bracket
1	Power Steering Bracket
11	M6 x 16mm Flange Head Bolt
4	M6 Flange Nut
3	M6 Fender Washer
4	M6 Clip Nut
1	Braided Steel High-Pressure Line

### Tools Required

Metric Tools

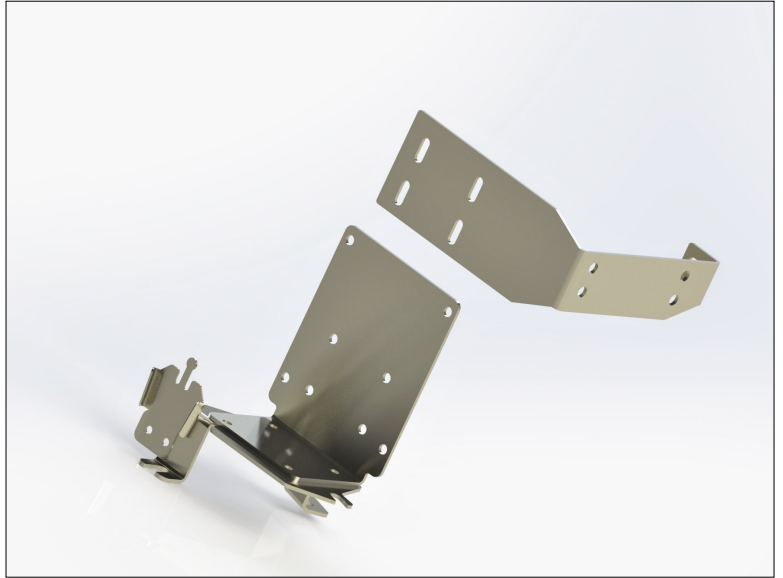


**NOTE:** The Slee SOK0002 is designed to fit the ARB Dual Compressor (CKMTA12) to 2005-2015 V6-equipped Tacomas.

The instructions below may depict a black powdercoated bracket. It has been superseded by a passivated stainless steel bracket which is more durable and rust resistant, but the installation procedure is identical.

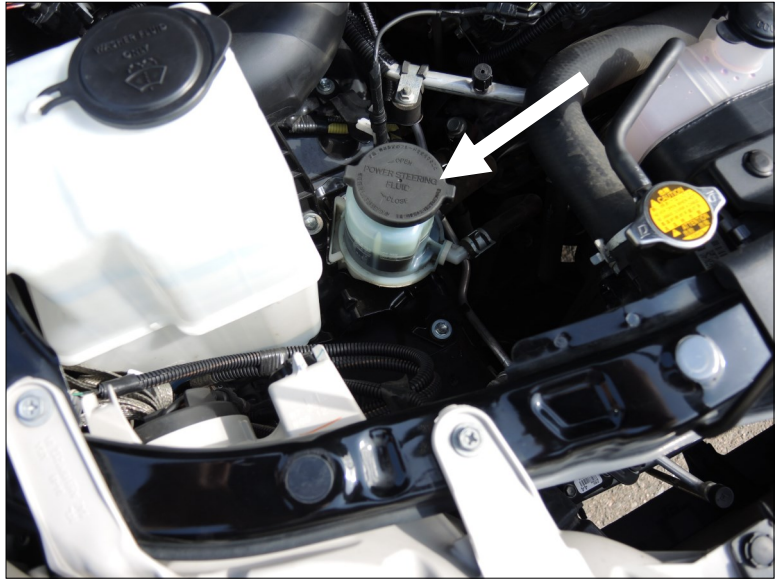
This product is not compatible with AFE aftermarket air intakes.

**1** Organize the work area. Make sure all parts for the kit are present.



Organize the work area. (Step 1)

**2** Relocate the power steering reservoir by lifting it straight up. Set the bottle out of the way for now. Take care to not spill fluid.



Relocate the power steering reservoir. (Step 2)

**3** Remove the washer fluid reservoir by removing the two bolts at the inner fender. Pull up to completely remove the reservoir. Disconnect the electrical plug and the hose to set the reservoir aside.

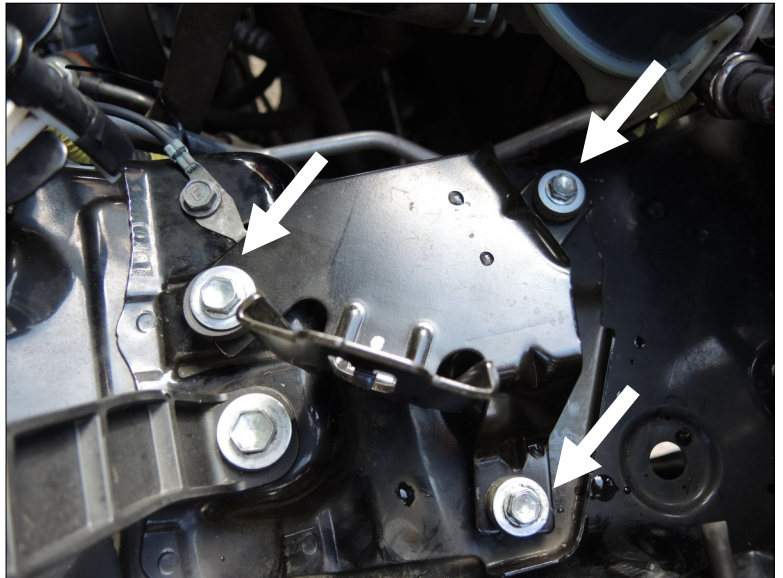
Retain all hardware.



Remove the washer fluid reservoir. (Step 3)

**4** Remove the power steering reservoir bracket by removing the (3) factory bolts shown.

The bracket can be discarded.



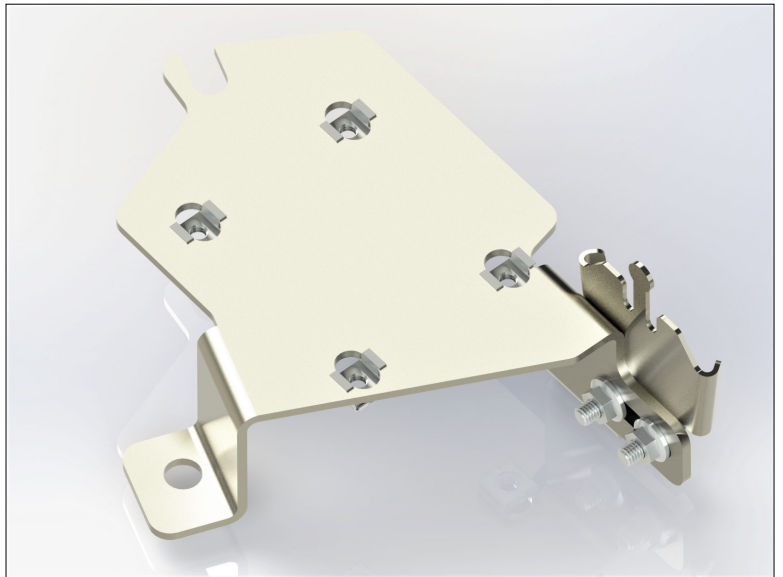
Remove the power steering bracket. (Step 4)

**5** Mount the new Slee power steering reservoir bracket to the Slee power steering bracket. Install clip nuts in the orientation shown.

**Hint:** use a small flat blade screw driver, instead of fingers, to install clip nuts.

**Hardware:**

- (2) M6 x 16 Flange Head Bolt
- (2) M6 Flange Nut
- (4) M6 Clip Nuts



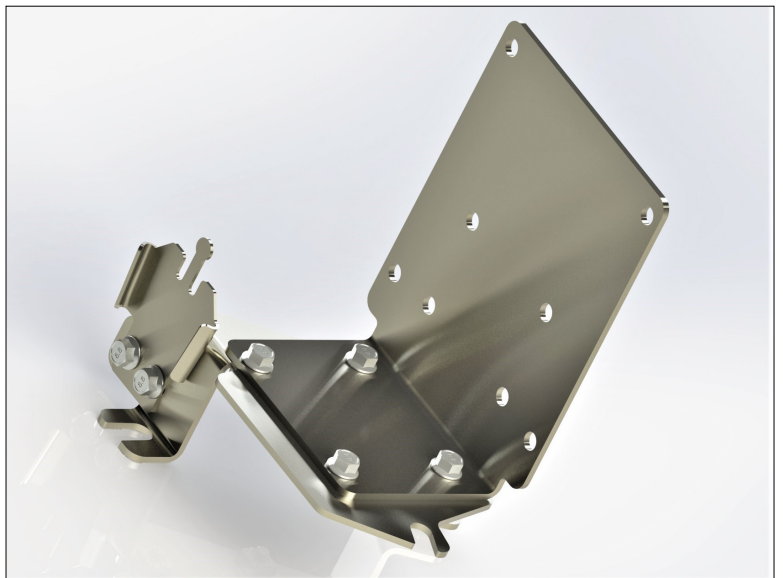
Attach the power steering brackets, install clip nuts. (Step 5)

**6** Mount the bottom compressor bracket to the Slee power steering bracket as shown.

Test fit inside the vehicle before locking down the new hardware.

**Hardware:**

- (4) M6 x 16 Flange Head Bolt



Attach the bottom compressor bracket. (Step 6)

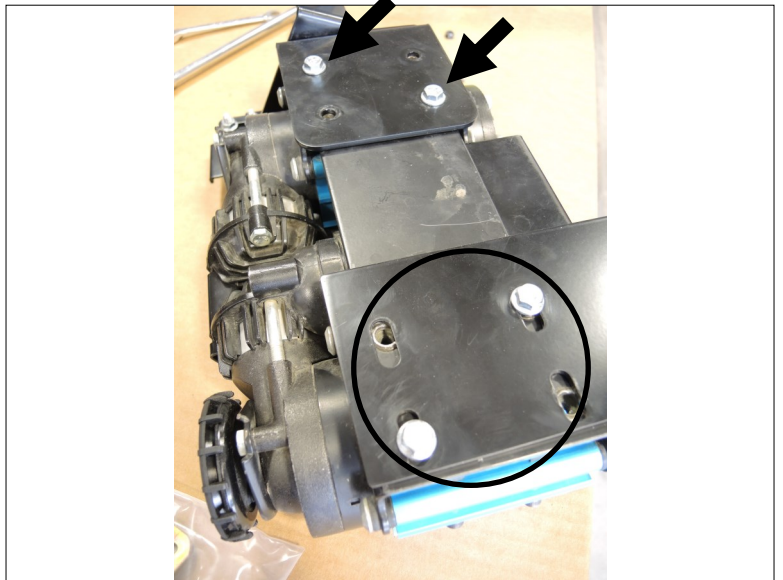


**7** Using the hardware supplied with the ARB compressor, loosely mount twin compressor to the top and bottom Slee compressor brackets.

The upper hardware will be secured later. Tighten the lower hardware circled.

**Hardware:**

[Supplied by ARB]

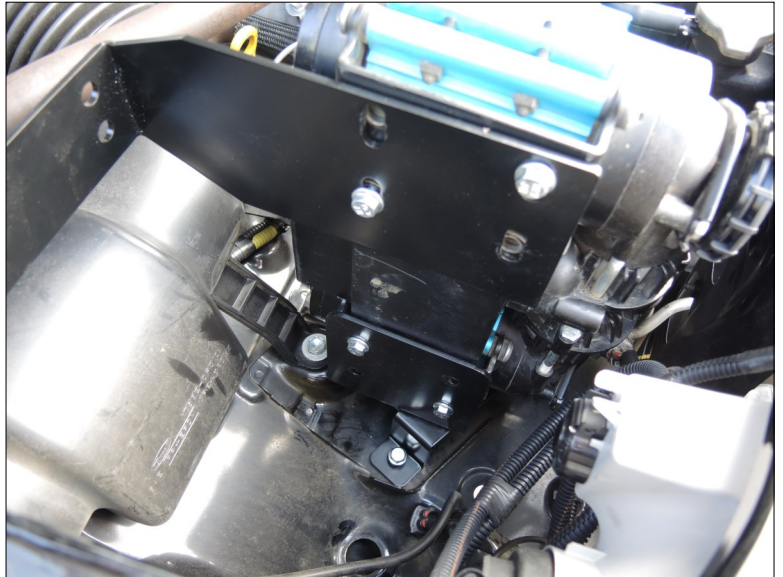


Attach the compressor. (Step 7)

**8** Mount the lower bracket (with compressor) to the inner fender.

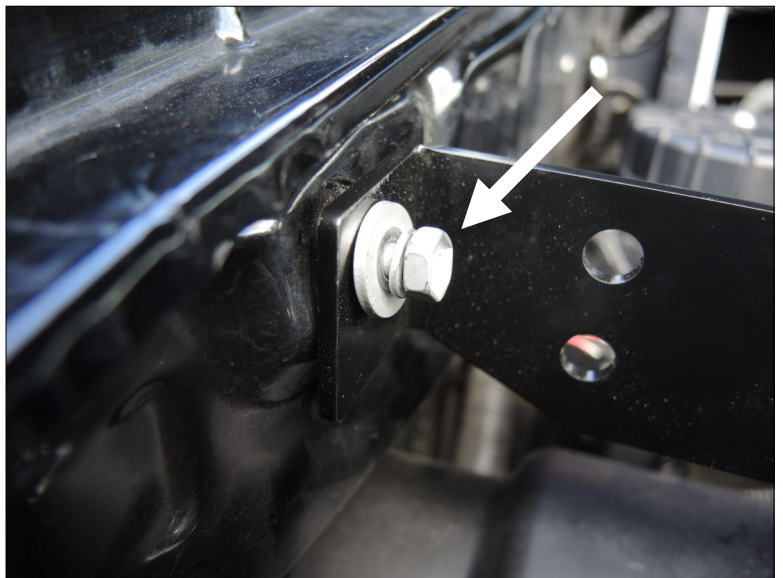
**Hardware:**

(3) M6 x 16mm Flange Head Bolt



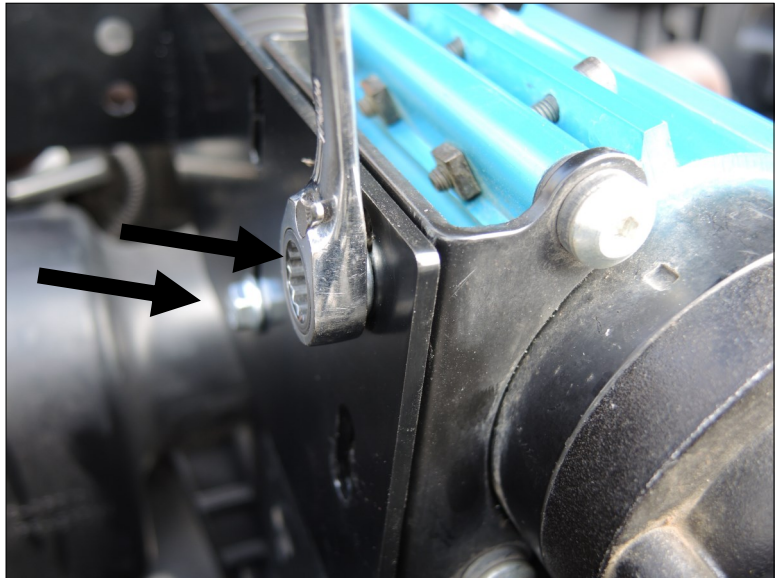
Mount the bracket to the inner fender. (Step 8)

**9** Align the Top Compressor Bracket mounting hole to the fender by temporarily installing the OE bolt removed in step #3.



Attach the top compressor bracket. (Step 9)

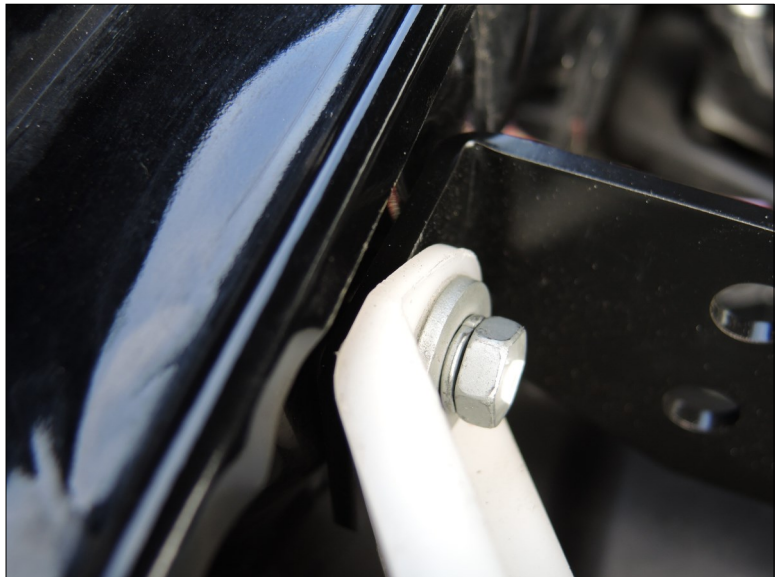
**10** Tighten the hardware attaching the compressor to the Top Compressor Bracket



Secure the top compressor bracket. (Step 10)

**11** Remove the bolt from step #9. Reinstall the windshield washer reservoir, reconnect the hose and plug. Note that the Slee air compressor bracket fits underneath the windshield washer reservoir as shown.

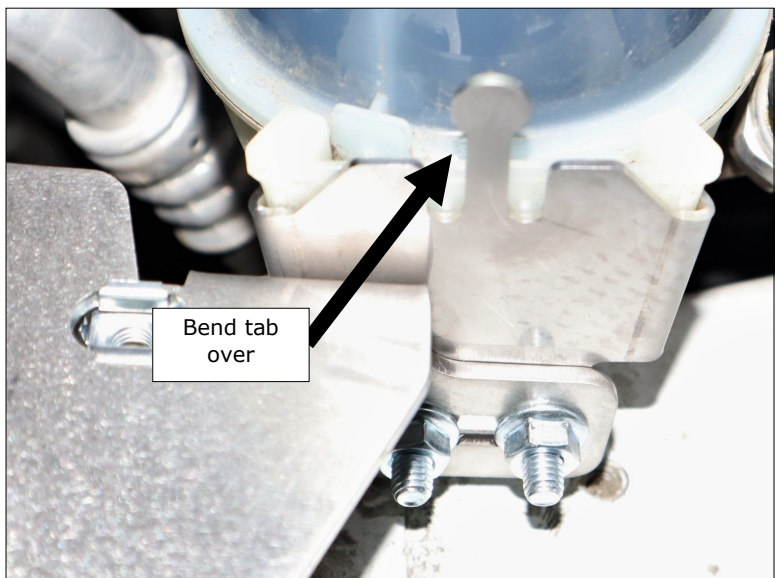
Secure the washer reservoir with the factory hardware.



Reinstall Washer Reservoir. (Step 11)

**12** Install the power steering reservoir into the new Slee Power Steering Reservoir bracket.

Using a medium flat blade screw driver for leverage, bend the tab over to lock in the reservoir.



Install reservoir, bend tab (Step 12)



**13** Mount the ARB manifold to the top compressor bracket as shown. Plumb the compressor to the manifold with the braided steel line.

**Hint:** The manifold is only required if installing solenoids for ARB air lockers or multiple air hose connection points.

**Hardware:**

(2) M6 x 16mm Flange Head Bolt

(2) M6 Flange Nut



Install the manifold. (Step 13)

**14** Verify all hardware is secure and in place. Finish plumbing and wiring the compressor to complete the installation.



Installation Complete. (Step 14)