



700 Pine Ridge Road Golden CO 80403 Tel (303) 278 8287 1(888) 4X4 SLEE Fax (303) 278 7182

Slee Off-Road – [ARB Compressor Bracket for 200LC] (SOK0013) – Installation instruction 1



For 200 Series LC and LX570

Thank you for your purchase from Slee Off-Road! If you should you have any questions or concerns, please do not hesitate to contact us immediately at 1 888 4X4 SLEE or at sales@sleeoffroad.com.

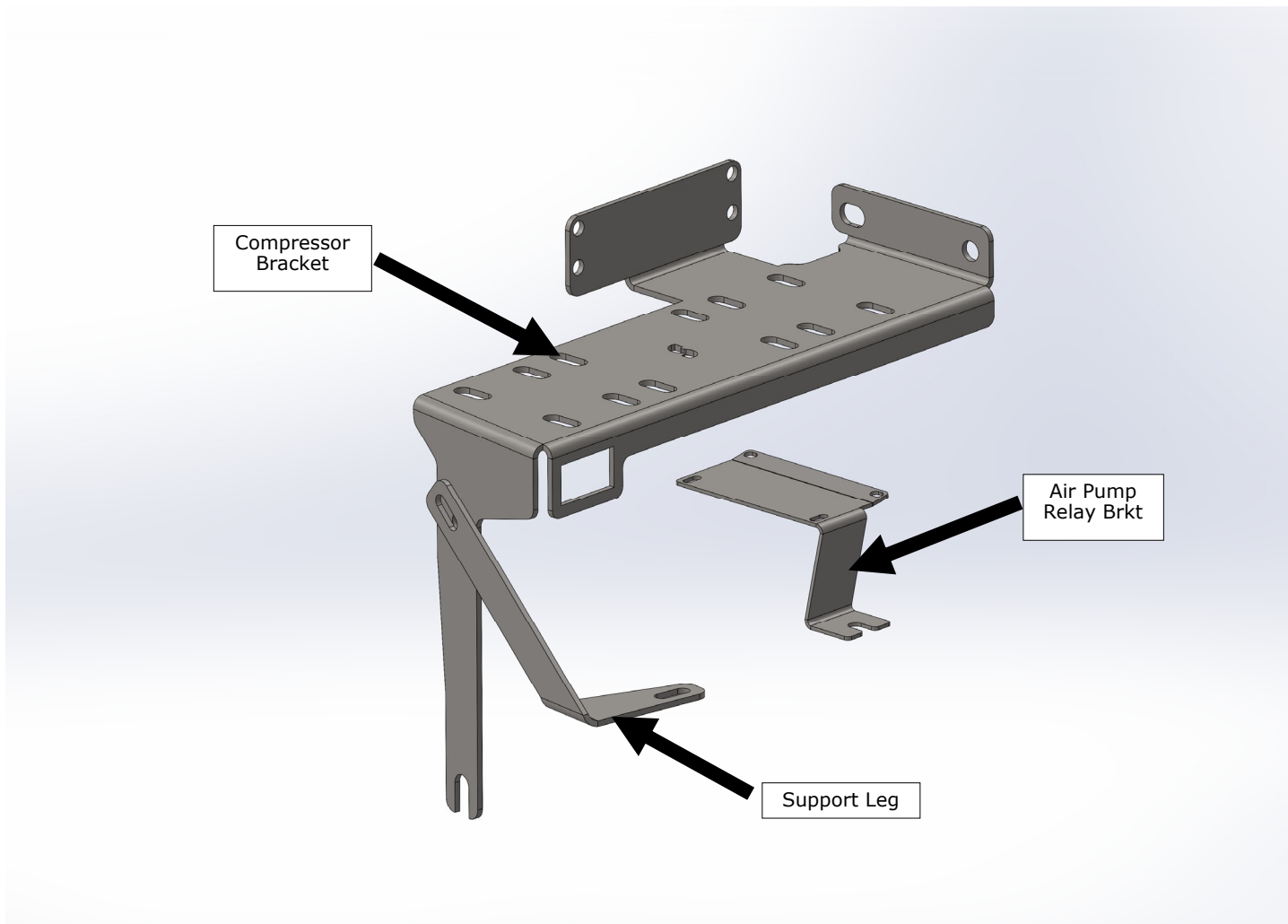
Slee Off-Road strives to provide comprehensive installation instructions. However, in some circumstances minor inconsistencies may be encountered with instructions and or provided parts. If you encounter such an inconsistency, please notify us, as your input is important.

Slee Off-Road guarantees all parts free from defects for one year from the original purchase date. Slee Off-Road and Slee & Co under no circumstances will be held liable for any damages or injuries to the users of this product(s) and or their equipment as a result of the use of this information or parts obtained from Slee Off Road.

Slee Off-Road – [ARB Compressor Bracket for 200LC] (SOK0013) – Installation instruction 2

QTY	Parts Included
1	Compressor Bracket
1	Air Pump Relay Bracket
1	Support Leg
5	M6 x 16mm Flange Head Bolt
4	M6 Flange Nut
2	M8 x 16mm Flange Head Bolt
1	M6 Push Nut (Preinstalled with M6 Bolt and M6 Nut)
1	Brass 90 Degree Fitting

Tools Required
Metric Tools
Philips or JIS Screwdriver
Thread Sealant (PTFE Tape or simi-



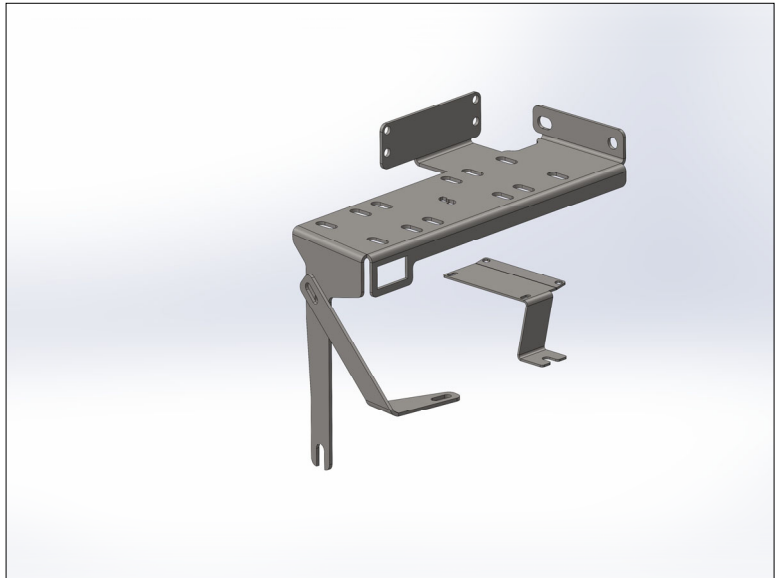
NOTE: The Slee SOK0013 fits ARB Single and Twin compressors to the 200 Series Land Cruiser.

If installing the ARB Dual compressor CKMTA12, the following kits (sold separately) are **required**: ARB 171503 (Pump Up Kit,) ARB 171302 (Manifold).

If installing the ARB Single compressor CKMA12, the following kit is **recommended**: ARB 171503 (Pump Up Kit)

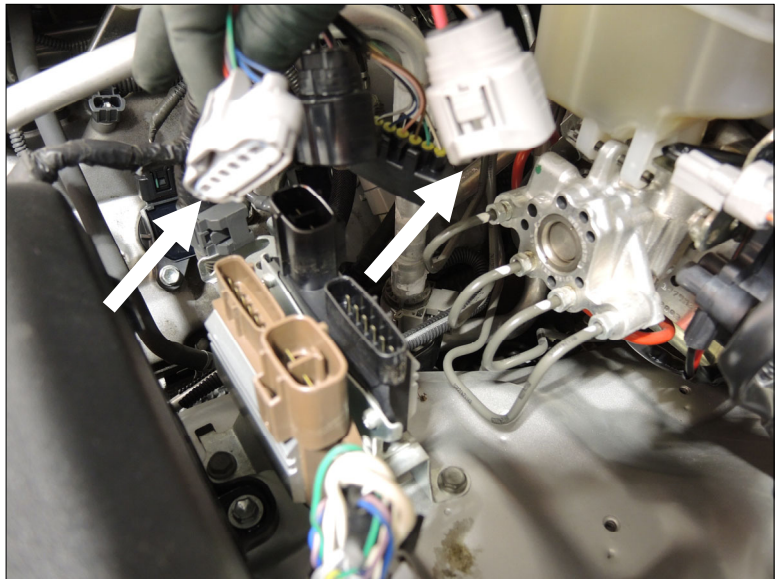
1 Organize the work area. Make sure all parts for the kit are present.

Note that these instructions may show a black powdercoated bracket. It has been superseded with the passivated stainless steel part. Rust and corrosion resistance have been greatly improved, however, fitment remains identical.



Organize the work area. (Step 1)

2 Towards the rear driver side of the engine bay, locate the harness plugged into the air pump relays. Unplug the connectors.



Unplug the two connectors. (Step 2)

3 Unclip the harness retainer. Remove the ground wire bolt circled. Unbolt the air pump relay bracket.

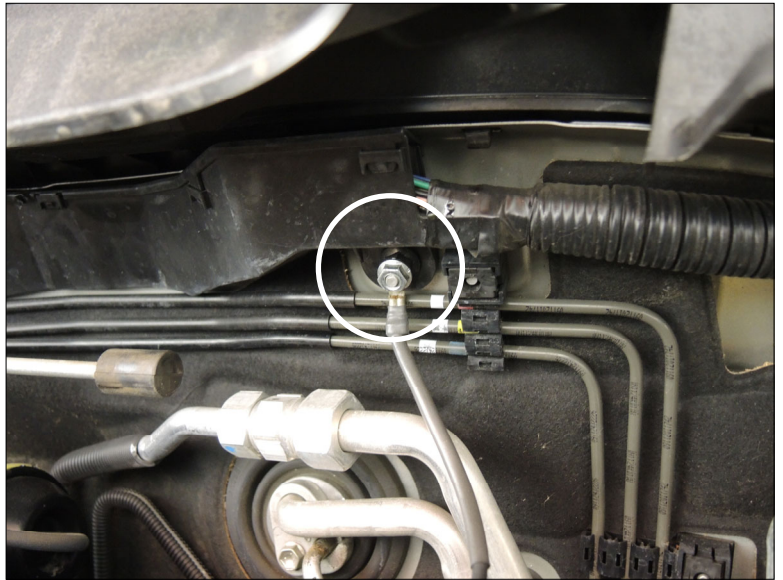


Unclip harness retainer Remove ground bolt. (Step 3)

4 Relocate the ground wire to the circled stud on the firewall.

Hardware:

(1) M6 Flange Nut



Relocate the ground wire and bolt. (Step 4)

5 Remove the Philips screws from the air pump relays. Attach Air pump relays to the new Slee Air Pump Relay Bracket, re-using the factory hardware.

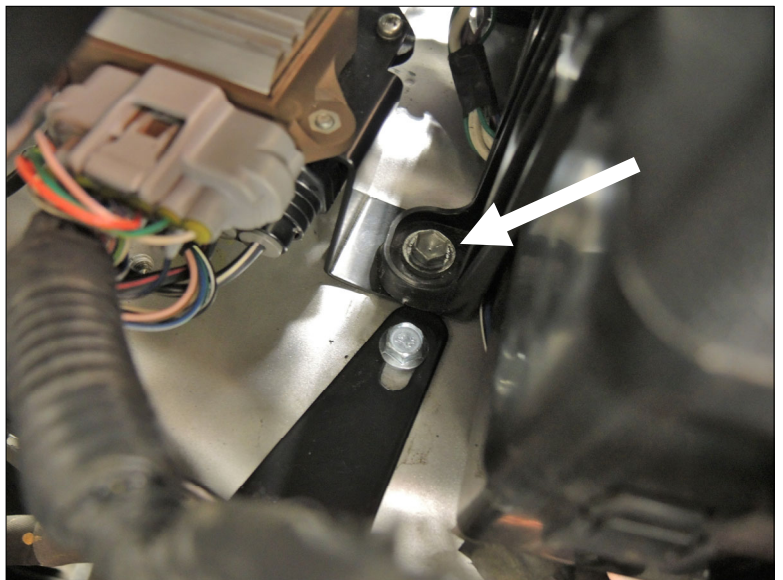
Hint: A

Hardware: A



Mount the relays to the Air Pump Relay Bracket. (Step 5)

6 Remove the factory bolt that holds the fuse block in place. Mount the Air Pump Relay Bracket to the vehicle as shown, reusing the factory bolt.



Mount the Air Pump Relay with factory bolt shown. (Step 6)

7 Using the hardware supplied by ARB, mount the compressor as shown with arrows

Using the hardware supplied with the Slee bracket, mount the ARB manifold as shown by the circles.

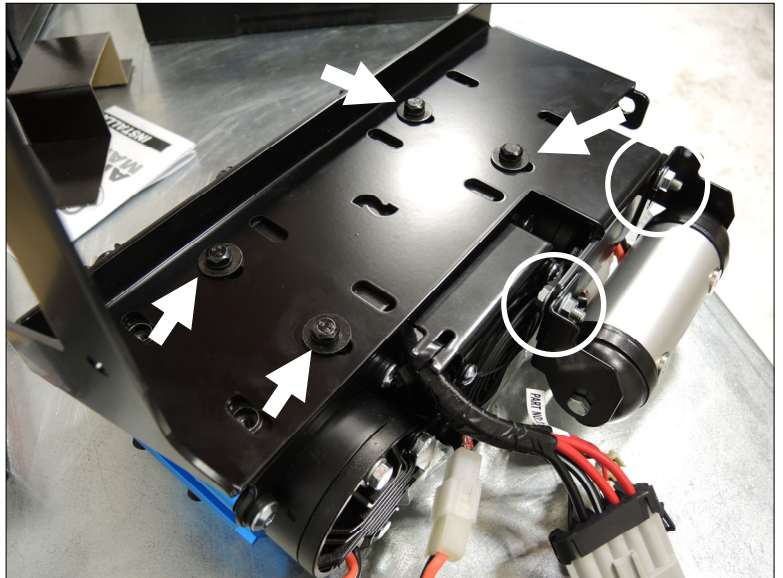
The compressor is installed as far forward as possible in order to provide space for the manifold.

Refer to STEP 14 for details on trimming fuse box cover for clearance.

Hardware:

(2) M6 x 16mm Flange Bolt

(2) M6 Flange Nut



Mount compressor and manifold. (Step 7)

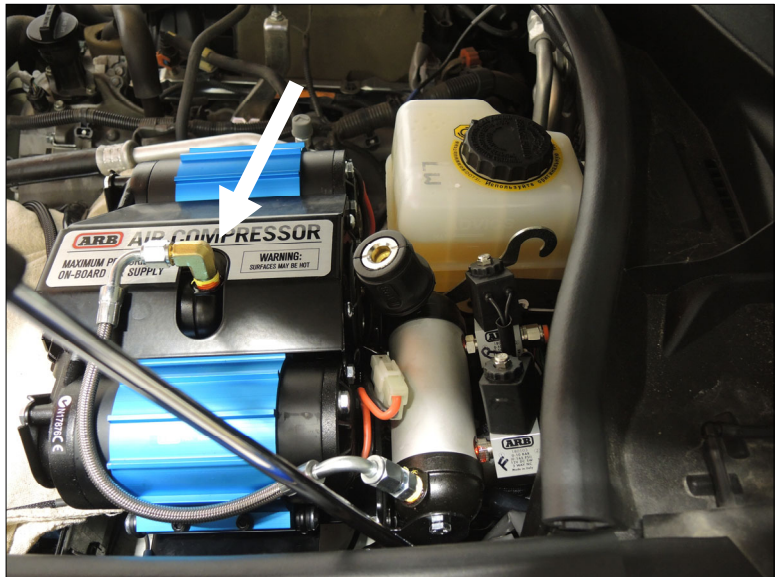
8 Attach the elbow to the compressor. The stainless line must be routed exactly as shown.

The stainless line gets very hot during operation, it is critical that the line does not contact the hood strut, electrical wiring, or any rubber/plastic components.

Do not install the compressor bracket yet- photo is for reference only.

NOTE: If connections on the stainless line does not line up, the fittings can be rotated carefully.

Refer to this YOUTUBE video for details.



Using the elbow, route the stainless line as shown. (Step 8)

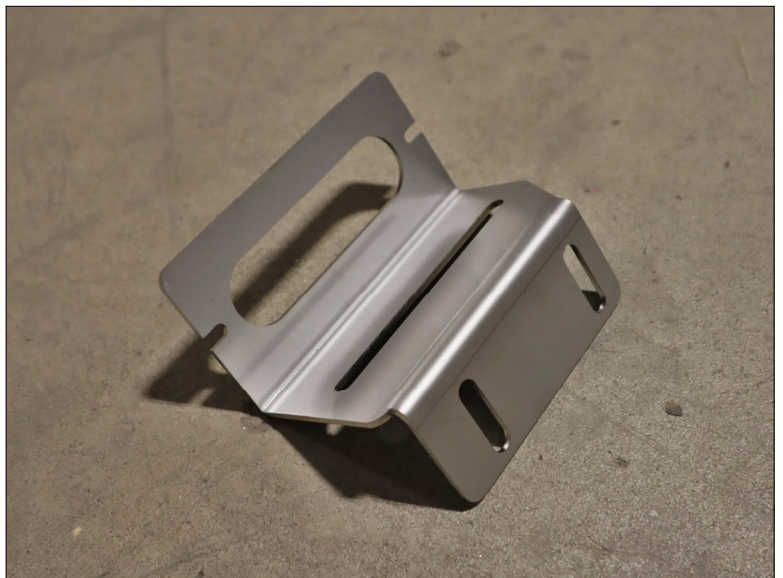
<https://youtube.com/shorts/W8JMu1IzFrM?feature=share>

Hardware:

(1) Brass 90deg air fitting

9 If fitting the optional Slee SwitchPro Engine Bay Mount (SOK2011), install this product before proceeding.

If not installing the SOK2011 SwitchPro mount, proceed to step 10.



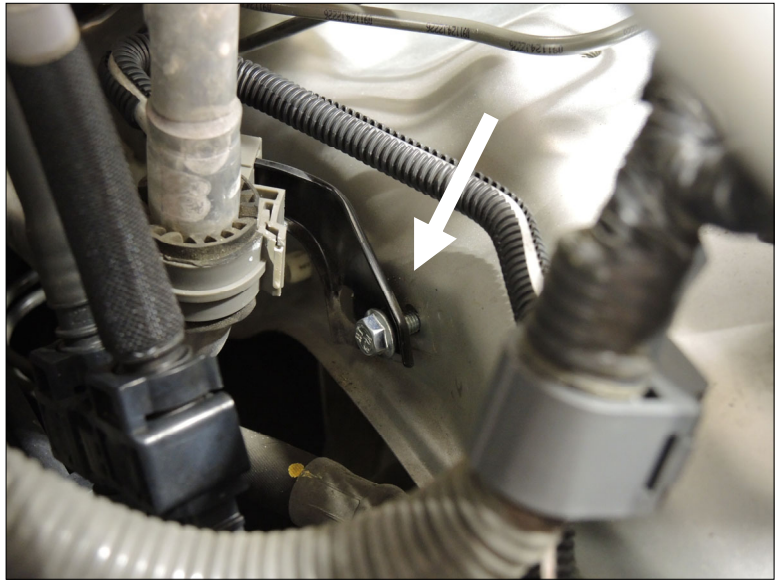
If fitting the SwitchPro Mount, do so now. (Step 9)

10 Locate and remove the bolt from the lower inner fender, shown with an arrow.

Replace this bolt with the longer fastener included in the kit.

Hardware:

(1) M6 x 16 Flange Bolt



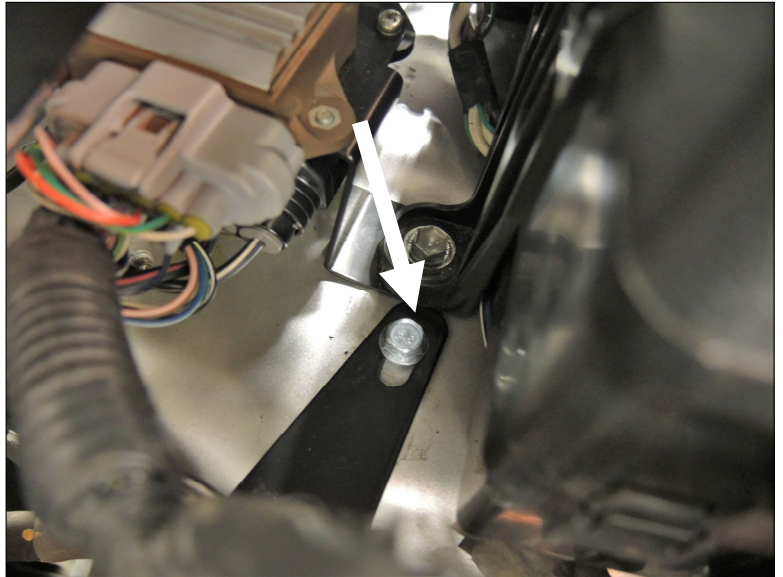
Replace this bolt. (Step 10)

11 Attach the Support Leg to the inner fender as shown.

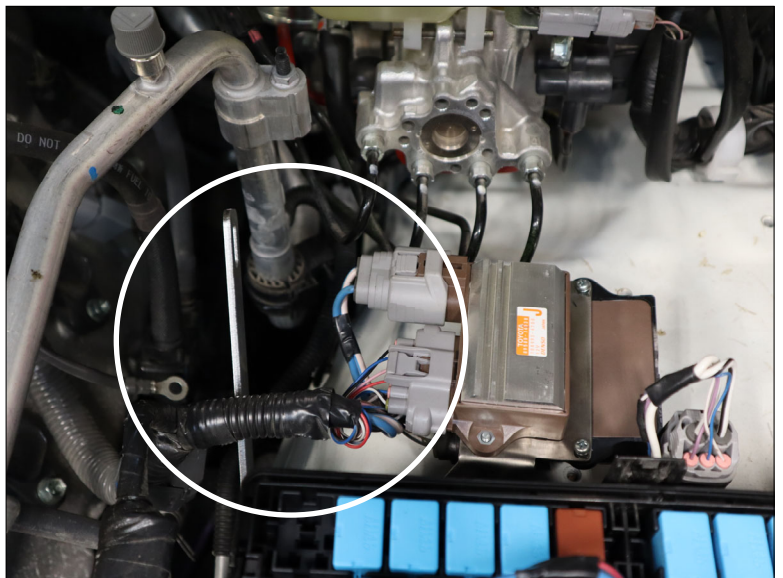
Verify clearance between the support leg and the relay wiring. It is critical that the wiring does not contact any part of the bracket.

Hardware:

(1) M6 x 16 Flange Bolt



Attach the Support Leg. (Step 11)

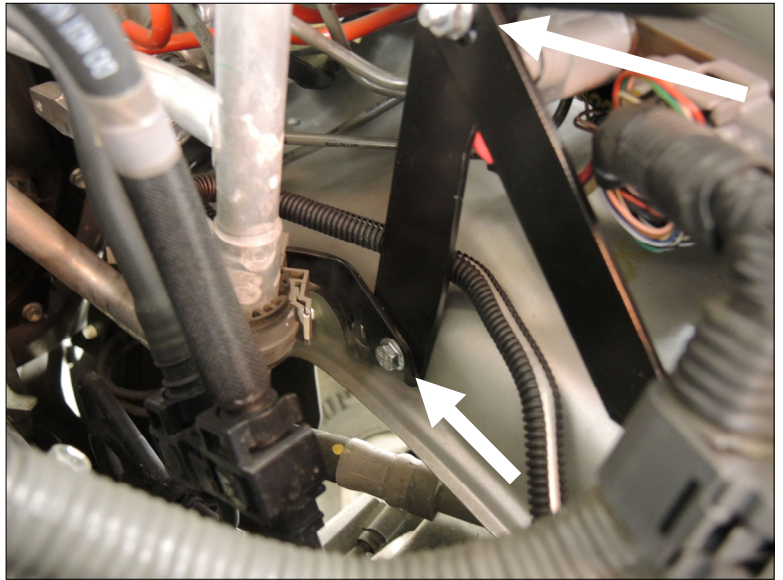


Verify Support Leg clearance with wiring. (Step 12)

12 Attach the compressor Bracket.
Loosely secure with all hardware
before tightening.

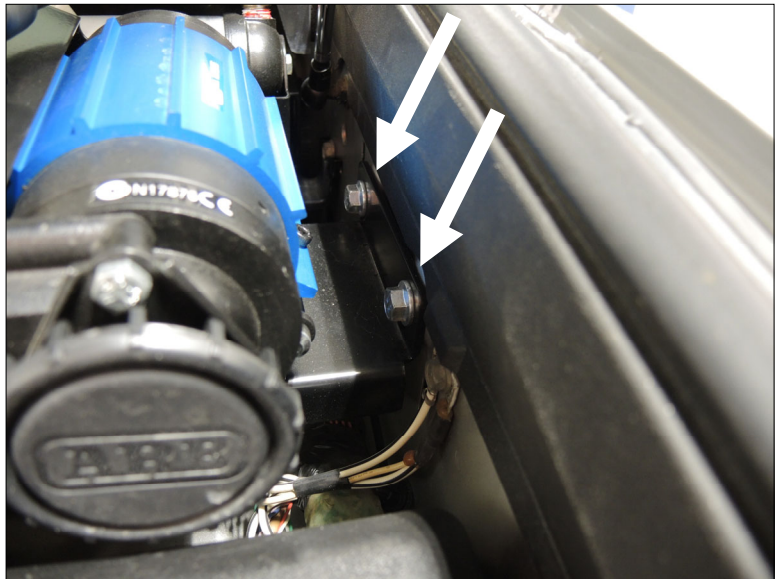
Hardware:

- (1) M6 x 16 Flange Bolt
- (2) M8 x 16 Flange Bolt
- (1) M6 Flange Nut



Attach Compressor Bracket and Support Leg. (Step 12)

13 Complete wiring and plumbing per
ARB instructions. Verify the installa-
tion, wiring, compressor, and bracket do
not interfere with other components such
as wiring or the hood strut. Close hood to
verify clearance.



Attach Compressor Bracket to inner fender. (Step 12)



Installation Complete.

14 TRIMMING FUSE BOX COVER

The compressor is installed as far forward on the bracket as possible to provide clearance for the manifold. This will create some interference between the air filters on the compressor and the the fuse box lid latches.

Trim latches with a sharp utility knife as show.

This will ensure the lid can still be latches and removed with compressor installed.



Trimming Fuse Box Lid Latches. (Step 14)

15 Trimming the latches should provide enough space to move the compressor as far forward as possible.

This completes the installation of the Slee SOK0013 Compressor Bracket.



Clearance between filters and fuse box. (Step 15)