



700 Pine Ridge Road Golden CO 80403 Tel (303) 278 8287 1(888) 4X4 SLEE Fax (303) 278 7182

Slee Off-Road – [MaxTrax Mount for Slee Bumper] (SOK0054) – Installation instruction 1



Thank you for your purchase from Slee Off-Road! If you should you have any questions or concerns, please do not hesitate to contact us immediately at 1 888 4X4 SLEE or at sales@sleeoffroad.com.

Slee Off-Road strives to provide comprehensive installation instructions. However, in some circumstances minor inconsistencies may be encountered with instructions and or provided parts. If you encounter such an inconsistency, please notify us, as your input is important.

Slee Off-Road guarantees all parts free from defects for one year from the original purchase date. Slee Off-Road and Slee & Co under no circumstances will be held liable for any damages or injuries to the users of this product(s) and or their equipment as a result of the use of this information or parts obtained from Slee Off Road.

Slee Off-Road – [MaxTrax Mount for Slee Bumper] (SOK0054) – Installation instruction 2

QTY	Parts Included
1	Left MaxTrax Mount
1	Right MaxTrax Mount
2	3/8 x 1-1/4" bolt
2	3/8 x 1" bolt
8	3/8" washer
4	3/8" Lock Nut
2	Tie straps

Tools Required
SAE Tools

NOTE: The Slee SOK0054 MaxTrax Mount is for use with Slee rear bumpers featuring a formed metal ladder and spare tire carrier, such as the SOK1326 (200 Series Rear Bumper) or the SOK1272 (80 Series Rear Bumper.)

If you haven't installed the rear bumper yet, please do so before proceeding.

1 Verify the contents and tools required.
Note the correct orientation of the retaining tabs for the MaxTrax mount as shown, with the wings pointing outward.

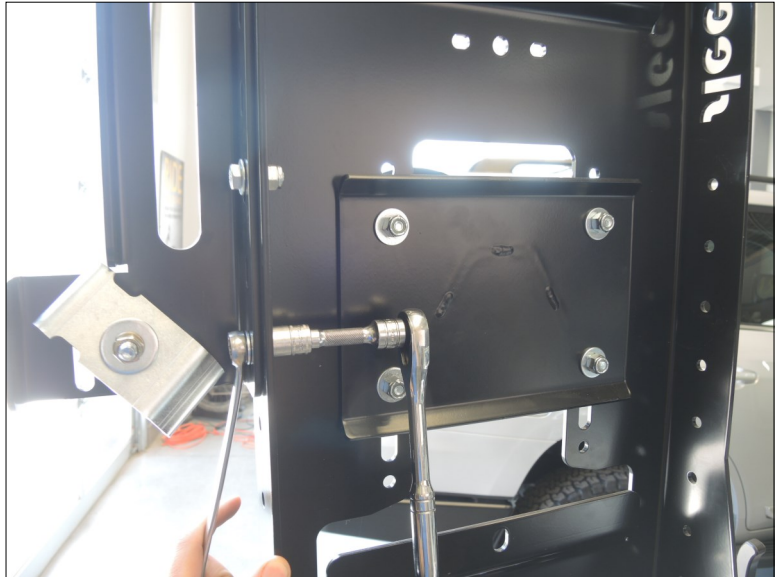
Hardware:

- (1) Left MaxTrax Mount
- (1) Right MaxTrax Mount



Correct tab orientation with wings pointed towards bolt holes. (Step1)

2 If you already have the Hi-Lift bracket installed, remove it. If no Hi-Lift bracket is present, proceed to step 4.

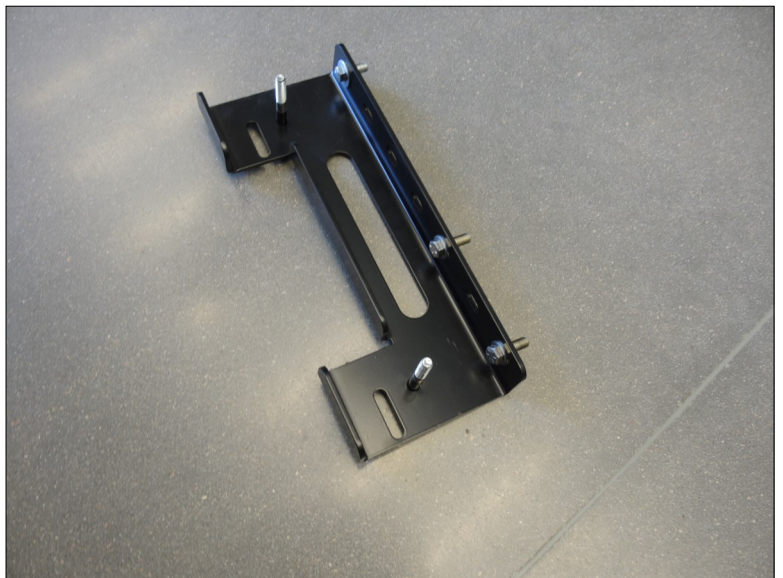


Remove the Hi-Lift Bracket if installed. (Step 2)

3 Use one existing bolt from the Hi-Lift bracket for the top fastener. Use two provided longer bolts for the bottom mounting holes.

Hardware:

- (1) 3/8" x 1" Bolt (Existing)
- (2) 3/8" x 1-1/4" Bolt
- (3) 3/8" Washer



Longer hardware used for both brackets. (Step 3)

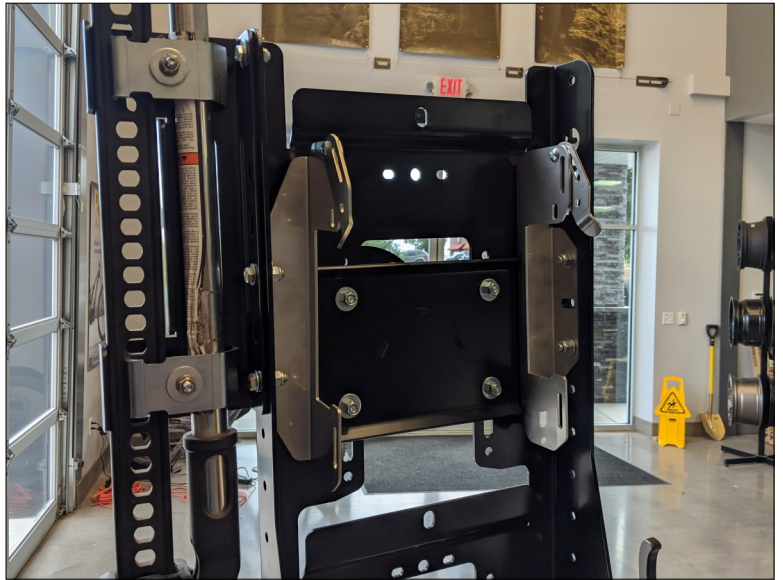
Slee Off-Road – [MaxTrax Mount for Slee Bumper] (SOK0054) – Installation instruction 4

4 Install the MaxTrax brackets and Hi-Lift bracket as shown. Tighten all 5 bolts.

If no Hi-Lift bracket is used, install the MaxTrax bracket in the same location using only 4 bolts.

Hardware:

- (2) 3/8" x 1" Bolt
- (4) 3/8" Washer
- (4) 3/8" Lock Nut



Install the brackets. (Step 4)

5 Lift the locking swingarms out to attach the MaxTrax. Secure the MaxTrax in place with the included straps.

The MaxTrax may be locked in place using the lower holes on the swingarms as shown.



Arms out for MaxTrax install, down to close. (Step 5)

Hardware:

- (2) straps



Add a lock to the bracket for extra security. (Step 5)