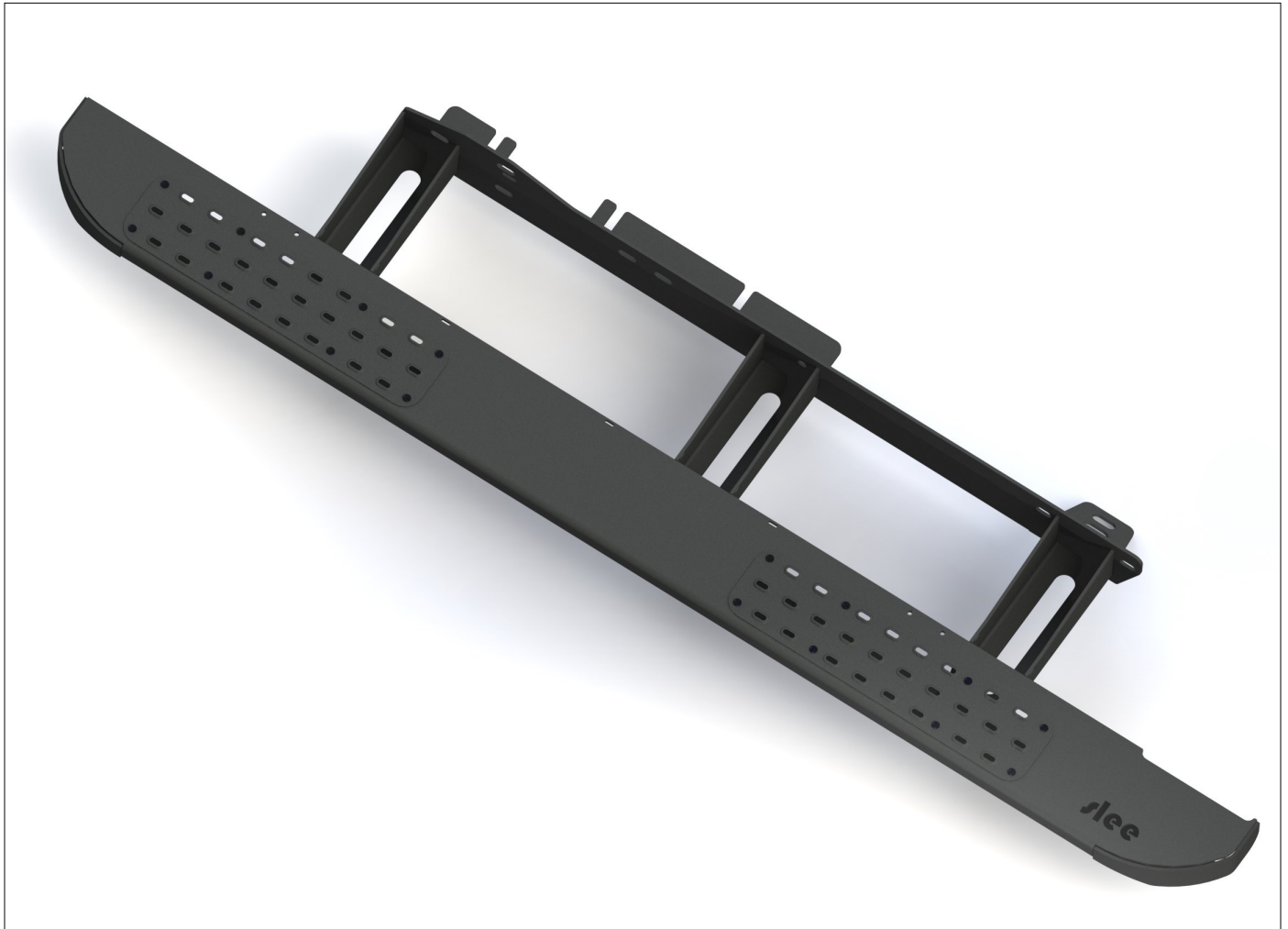




700 Pine Ridge Road Golden CO 80403 Tel (303) 278 8287 1(888) 4X4 SLEE Fax (303) 278 7182

Slee Off-Road – [GX470/4TH GEN 4RNR FORMED SLIDER] (SOK0073) – Installation instruction 1



Thank you for your purchase from Slee Off-Road! If you should you have any questions or concerns, please do not hesitate to contact us immediately at 1 888 4X4 SLEE or at sales@sleeoffroad.com.

Slee Off-Road strives to provide comprehensive installation instructions. However, in some circumstances minor inconsistencies may be encountered with instructions and or provided parts. If you encounter such an inconsistency, please notify us, as your input is important.

Slee Off-Road guarantees all parts free from defects for one year from the original purchase date. Slee Off-Road and Slee & Co under no circumstances will be held liable for any damages or injuries to the users of this product(s) and or their equipment as a result of the use of this information or parts obtained from Slee Off Road.

Slee Off-Road – [GX470/4TH GEN 4RNR FORMED SLIDER] (SOK0073) – Installation instruction 2

QTY	Parts Included	Tools
1	Driver side slider	
1	Passenger side slider	
4	Tread Plates	
14	8MM X 25MM FLANGE HEAD BOLTS	
14	8MM ID THINCK FENDER WASHERS	
8	3/8 X 1" GR5 BOLT	
8	3/8 ID THINCK FENDER WASHER	
8	3/8 STICK NUTS	
2	1/2 X 1-1/2" GR8 BOLT	
2	1/2 ID FLAT WASHERS GR8	
2	1/2 ID LOCK WASHERS GR8	
2	1/2 Z-NUTS (One passenger side, one driver side)	
32	1/4"-20 x 5/8" black SS button head cap screws (SUB 10-32 if needed)	
32	1/4"-20 flange head nylock nuts (SUB 10-32 if needed)	
1	Optional LED light kit SOK0082	

- 1** Unpackage and unwrap the sliders.
Organize and verify all hardware

****some steps are specific to the GX470**

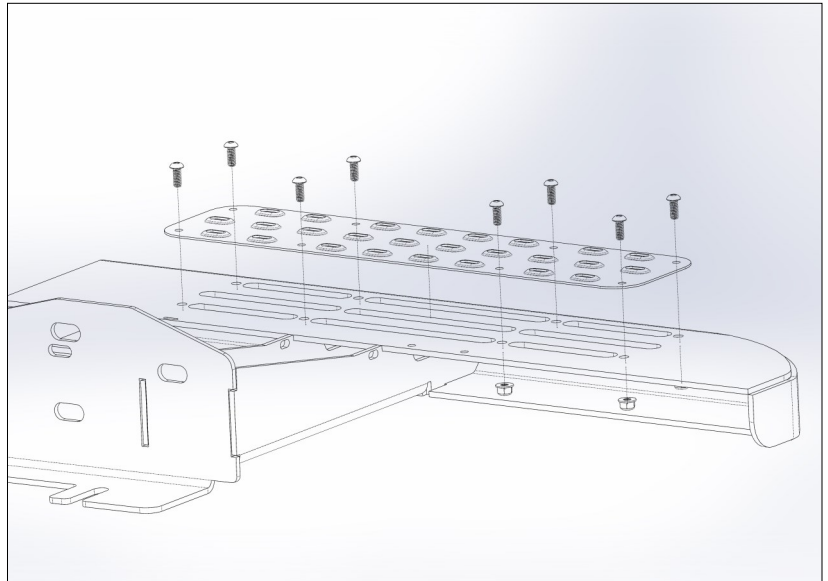
If the optional light kit was purchased, install the lights and brackets now.

- 2** Install the tread plates onto both sliders and **optional** lights and light tabs

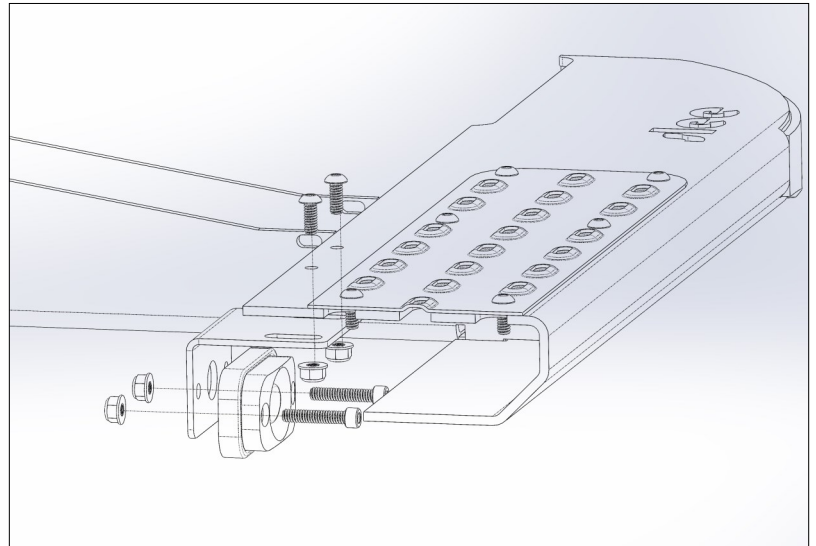
Hardware:

- 2 - Sliders
- 4 - Tread Plates
- 32 - 1/4"-20 x 5/8" button head screws
- 32 - 1/4"-20 flange head nylock nuts

- 1 - Led Light Kit SOK0082



Step 2: Install Tread Plates



Step 2: Install Optional lights

- 3** ****Gx470 Specific** Remove factory running boards. Removal is the same for driver and passenger side.

Remove the factory body clips in the door jam.

Continued on following page



Step 3: Remove Door Jam Body Clips

Continued....

Remove the clip behind the tire

Remove body cladding screw to access plastic clips

Pop the panel held by the two remaining body clips

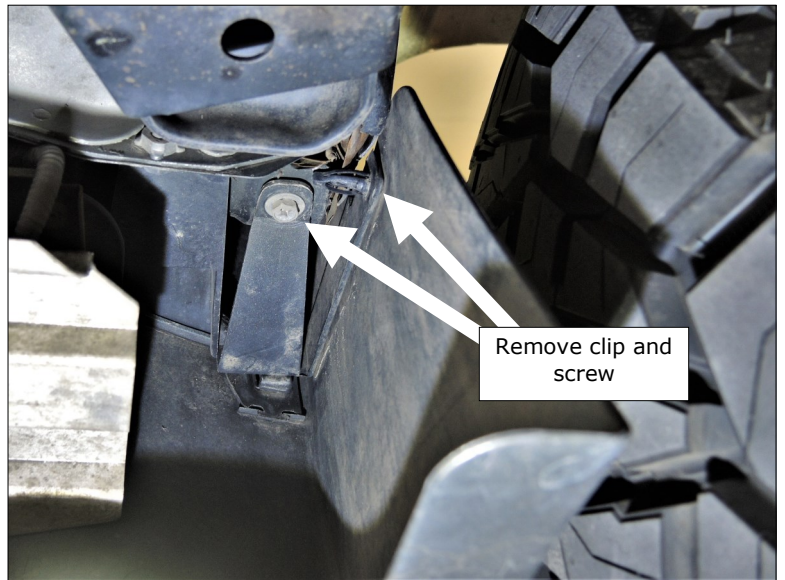
Unplug the factory light wiring harness, it will be re-used later. Remove 6 bolts that hold the running board to the body, and remove the running board

Use caution when removing the factory running board, part of it will be cut and re-used.

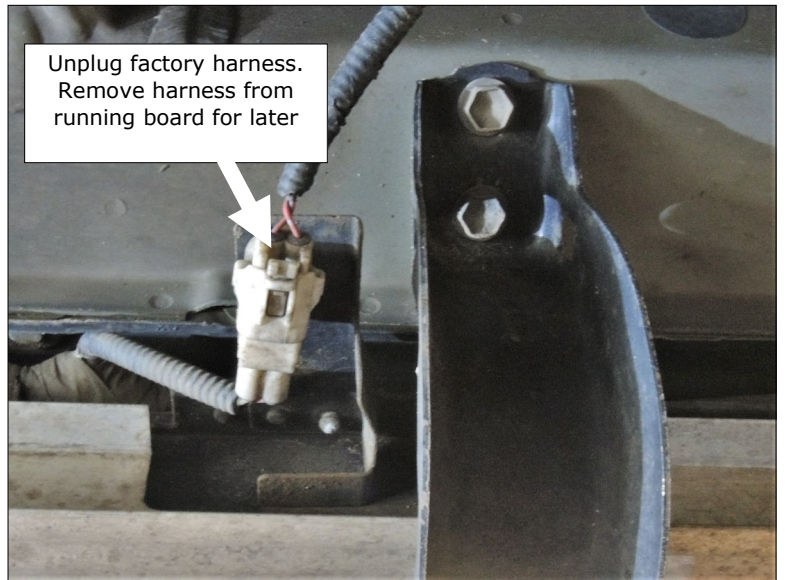
Remove the entire wire harness from the running board it will be used later.

After removing the running board, reinstall the factory bolts into their holes.

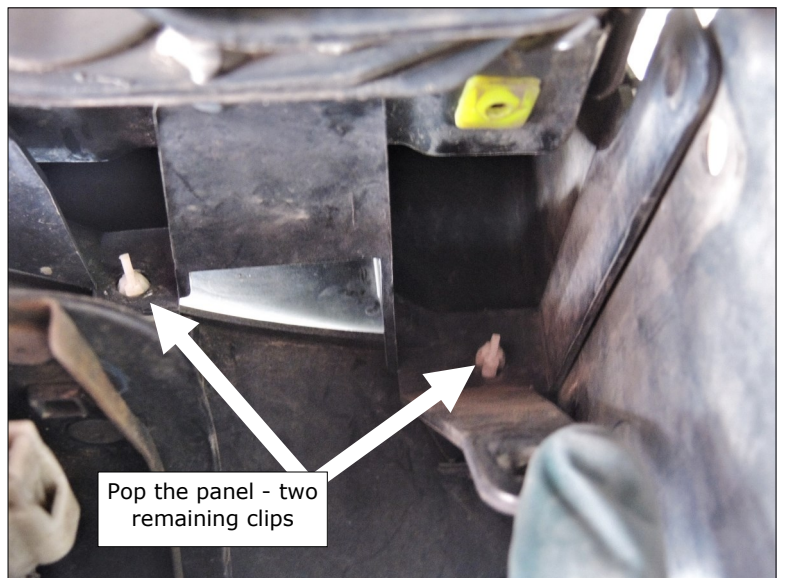
Hint: using a screw driver to partially depress the last two clips will make removal easier.



Step 3: Remove Screw and Clip



Step 3: Remove Plug and Mounting Bolts



Step 3: Pop Running Board Panel

4 Remove the 3 bolts from the factory fuel tank skid plate and bend the tabs flat.

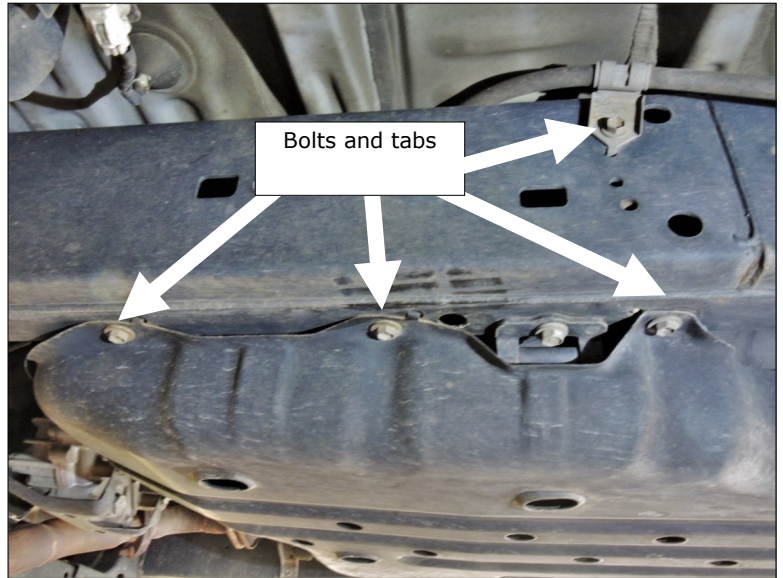
Remove the e-brake bolt. Rotate bracket up and out of the way.

Partially install new gas tank hardware to aid in holding the slider up.

Hardware:

3 - M8 flange head bolts

3 - M8 ID thick fender washers



Step 4: Remove and Replace Skid Bolts

5 Install the **driver** side slider.

Place the slider on the truck by first sandwiching the slider between the fuel tank skid plate and frame. Check to make sure the e-brake bracket is not under the slider body.

Loosely install all hardware where the frame has threaded provisions.



Step 5: Install Drivers side hardware

Continued on next page

Continued....

Install Z-nut in frame hole shown

Z-nuts do not require bending. Note Z-Nuts are side-specific (passenger/driver).

All remaining hardware requires using a stick nut to install.

Loosely install all hardware requiring stick nuts

Bend the stick nuts and feed them through holes in the frame.

When all hardware is in place, tighten all hardware.

Hint: Do not trim the sticks after installation.

Hardware:

- 5 - M8 x 25MM flange head bolts
- 4 - M8 ID thick fender washers
- 4 - 3/8 X 1" GR5 bolt
- 4 - 3/8 ID thick washers
- 1 - 1/2 Z-Nut
- 1 - 1/2 x 1-1/2" GR8 bolt
- 1 - 1/2 ID GR8 lock washer
- 1 - 1/2 ID GR8 washer

6 Install **Passenger** side slider following a similar procedure.

(((Don't forget to remove the e-brake cable bolt from the previous steps.)))

Loosely install the slider by using a few holes on the frame that have factory threads. This side requires more stick nuts than the drivers side. Install the Z-Nut in the same position as the drivers side.

Hint: Some stick nuts are easier to install from holes on the slider side of the frame.

Hardware:

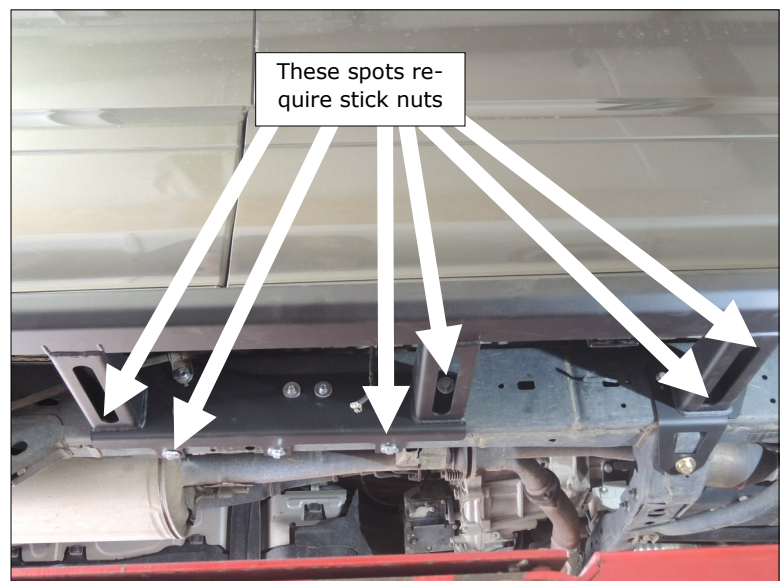
- 6 - M8 x 25mm flange head bolt
- 5 - M8 ID thick fender washers
- 6 - 3/8 x 1" GR5 bolts
- 6 - 3/8 ID thick washers
- 1 - 1/2 Z-Nut
- 1 - 1/2 x 1-1/2" GR8 bolt
- 1 - 1/2 ID GR8 lock washer
- 1 - 1/2 ID GR8 washer



Step 5: Loosely Install Z-Nut and Bolt



Step 5: Install Stick nuts and Hardware : Tighten



Step 6 Install Passenger Side Slider

7GX470 specific** Trim and install the factory cladding

Measure the distance from fender cladding down to the new slider. Subtract 1/4" from this measurement.

Transfer this measurement to the factory cladding and prepare for cutting.

Cut along the marked line

Install the cut piece back onto the truck using the 3 clips removed earlier and one clip from the door jam.

This procedure is identical on the driver and passenger side.

Hint: Measure twice cut once



Step 7: Measure for Cutting



Step 7: Cut and Install Trim

8GX470 Specific** Wire the **Optional** Slee LED lights to the factory illumination harness.

This procedure is identical for both driver and passenger sides.

Layout the factory light harness on the slider.

Note: This harness is removed from the factory running board.

Decide where to trim the Slee light wires and the factory harness and add 2 inches.



Step 8: Measure and Cut Factory Harness

9 ****GX470 Specific** Splice the Slee lights with the factory harness and install.

*There is a factory splice in the factory harness that is wrapped in electrical tape. Depending on where the harness was cut, you may need to resplice the factory red and white stripped wires when connecting the Slee lights.

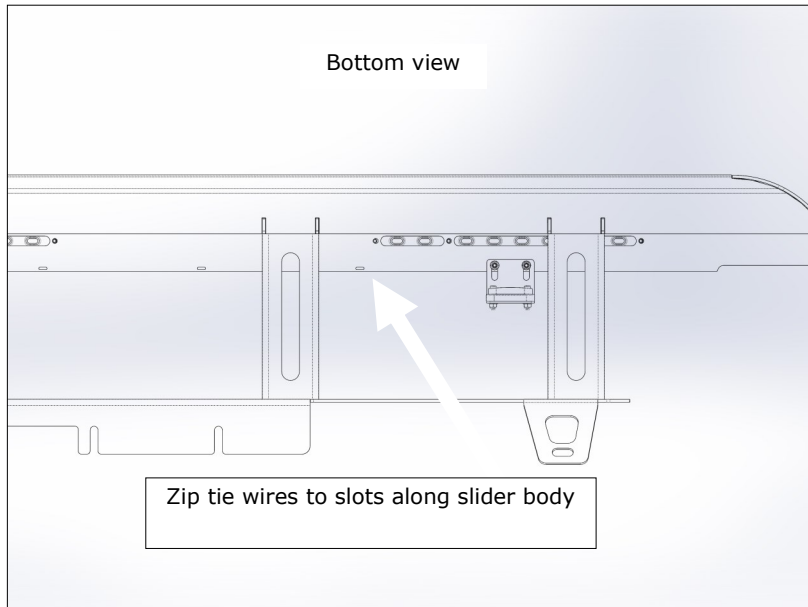
Splice the following wires:

Slee Light	Factory Harness
White	White/Red stripe
Brown	Red

There is no hardware provided for splicing. Slee recommends using solder and heat-shrink.

Reconnect the factory plug and check functionality by opening the car doors.

Zip tie the spliced harness to the light tabs and slots in the slider body.



Step 9: Splice and Zip-Tie up Wiring

Finished