



700 Pine Ridge Road Golden CO 80403 Tel (303) 278 8287 1(888) 4X4 SLEE Fax (303) 278 7182

Slee Off-Road –[SliderSteps for 5th Gen 4Runner & GX460] (SOK1320)–Installation instruction 1



For 5th Gen 4Runner and GX460

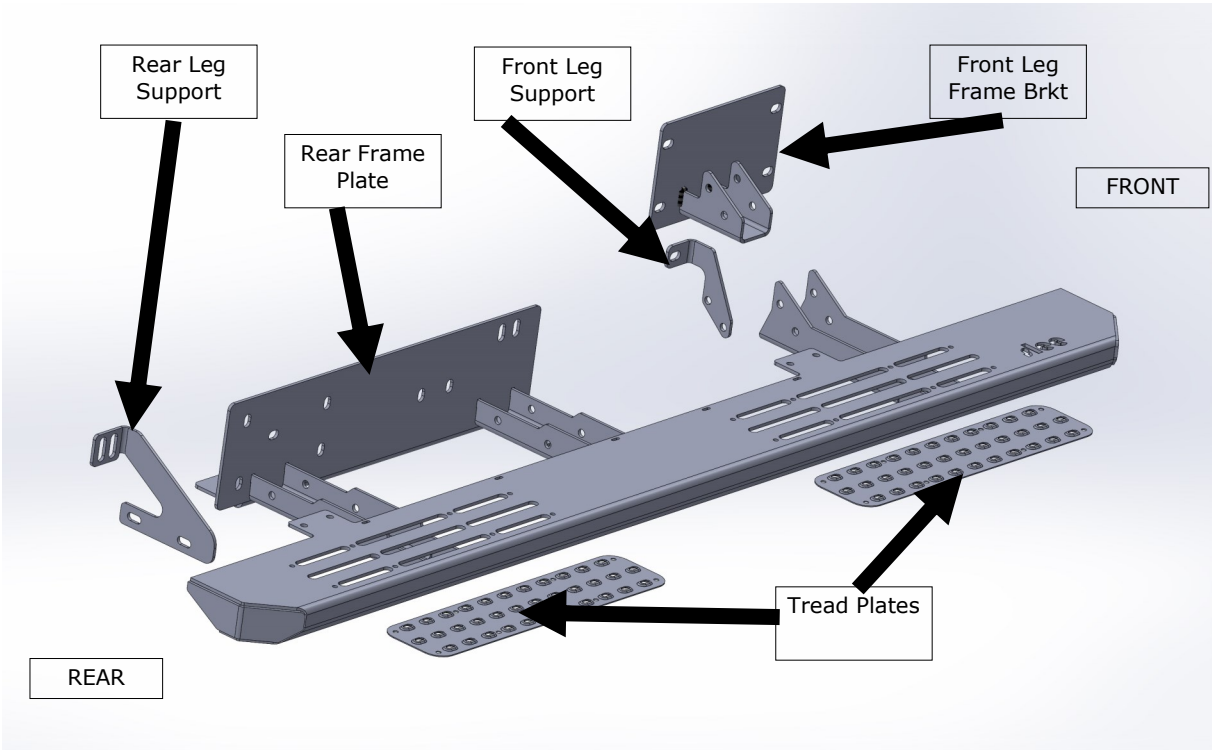
Thank you for your purchase from Slee Off-Road! If you should you have any questions or concerns, please do not hesitate to contact us immediately at 1 888 4X4 SLEE or at sales@sleeoffroad.com.

Slee Off-Road strives to provide comprehensive installation instructions. However, in some circumstances minor inconsistencies may be encountered with instructions and or provided parts. If you encounter such an inconsistency, please notify us, as your input is important.

Slee Off-Road guarantees all parts free from defects for one year from the original purchase date. Slee Off-Road and Slee & Co under no circumstances will be held liable for any damages or injuries to the users of this product(s) and or their equipment as a result of the use of this information or parts obtained from Slee Off Road.

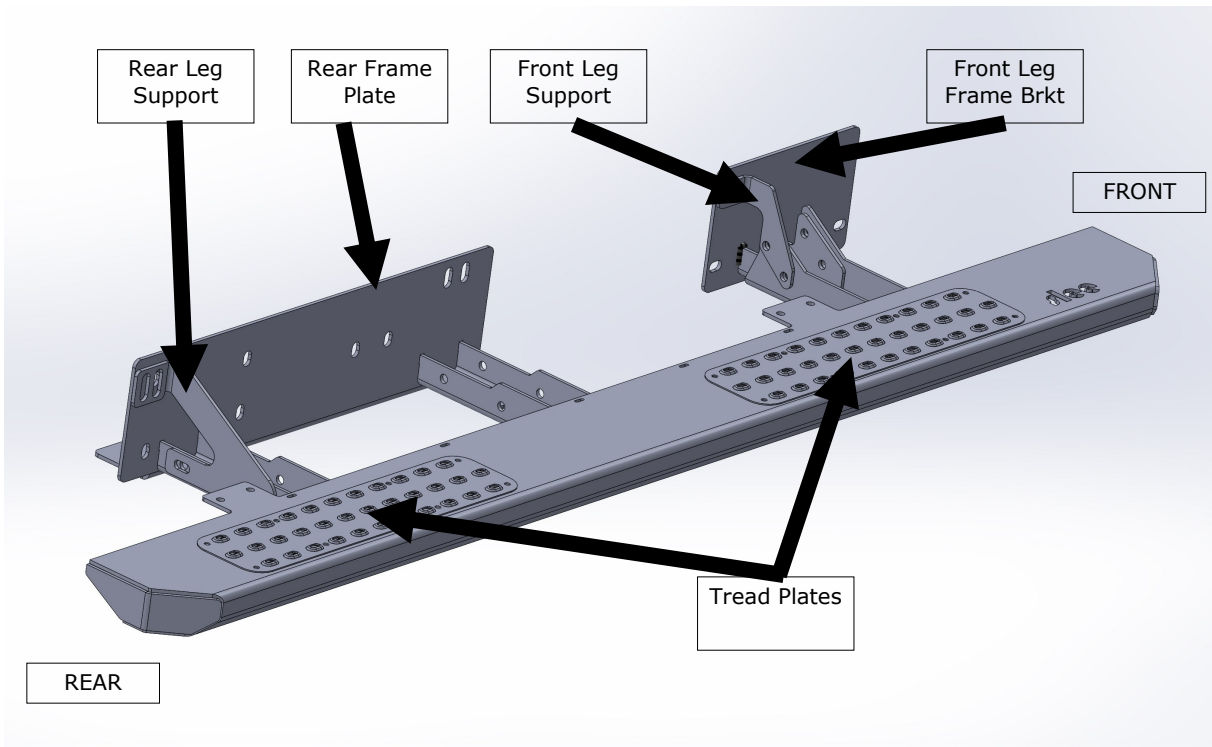
SOK1320 SliderSteps Components: Exploded View

Passenger Side Shown—Driver Side Symmetrical



SOK1320 SliderSteps Components: Assembled View

Passenger Side Shown—Driver Side Symmetrical



Slee Off-Road – [SliderSteps for 5th Gen 4Runner & GX460] (SOK1320) – Install instruction 3

QTY	Parts Included
1	Driver SliderStep
1	Driver Front Leg Frame Bracket
1	Driver Rear Leg Support
1	Driver Front Leg Support
1	Passenger SliderStep
1	Passenger Front Leg Frame Bracket
1	Passenger Rear Leg Support
1	Passenger Front Leg Support
4	Tread Plate
28	M8-1.25 x 25mm Flange Head Bolt
26	M8 Fender Washer, Thick
12	3/8"-16 x 1-1/4" Hex Bolt
2	3/8"-16 x 1-1/2" Hex Bolt
2	3/8"-16 "Stick Nut"
2	3/8" Fender Washer, Thick
24	3/8" Washer, USS
2	3/8" Lock Washer
12	3/8" Nylon-Insert Locknut
32	1/4"-20 x 5/8" Button Head Bolt
32	1/4"-20 Flange Nylon-Insert Lock Nut

Tools Required
Metric Tools
SAE Tools
Optional: M8-1.25 Tap
Grinder or Cutoff Wheel (for GX460)

NOTE: The Slee SOK1320 is designed to fit both the 5th Gen 4Runner and the GX460, with or without KDSS. Because of this, there may be some extra hardware in the kit and not every hole on the frame mounts will require hardware.

1 Organize the work area. Make sure all parts for the kit are present.

Hint: It may be necessary to chase threads in the frame. Use an M8—1.25 tap to clean and chase threads prior to installation.



GX460: Separate the running board components. (Step 2)

2 If installing on a GX460 equipped with factory running boards, remove the running boards. Unplug the running board lights and unbolt the running boards from the body. Separate the rocker cover (body color) from the running board tread and frame. Retain the rocker cover for fitment later. Retain the wiring as it will be used for the optional SOK0082 LED Slider Light Kit.

Hint: Slee recommends protecting the paint with painters or masking tape. Cutting the rocker cover helps with separating the assembly. Cut well below the tread plate to avoid marring the finish.



GX460: Separate the running board components. (Step 2)

3 If installing on a 5th Generation 4Runner, remove the rear mini mud guard between the rear tire and the back passenger doors.

Hint: These may either be retained for installation later or discarded. If retaining, also keep the factory hardware.



5g4R: Remove the mud guard. (Step 3)

4a If equipped with rocker covers or factory running boards, Slee recommends trimming the rocker cover and re-installing prior to slider installation.

Clean and prep the area. Cover the area with masking tape as this helps prevent damage to the paint while cutting.

This is a short cut: approx. 2-3" in the front and 3-4" at the rear. After removing the black plastic tread, the middle does not need to be cut.

Hint: Masking tape is easy to remove, protects the paint at the cut area, and helps prevent scratches elsewhere on the cover. Arguably, you can't overdo it with the tape here.



Mask the rocker cover with tape. (Step 4)

4b With a permanent marker, sketch the intended cut line on the masking tape. We found it best to attempt to follow the creases and body lines, following to the inside of the cover, and ending the cut into the opening for the plastic tread plates removed earlier.

The rear of the cover can be cut near horizontally while the front of the rocker cover can kick downward, following the creases in the design.



Rear Rocker Cover cut detail. (Step 4)

4c Using a cutoff wheel or reciprocating saw, cut the rocker cover. You can clean the cut by sanding, either by hand or with a power sander, to help straighten and smooth the lines. If sanding the edge, try to sand perpendicular to the rocker cover as to not damage the paint or masking tape.

After cutting, reinstall both rocker covers. It is possible to install the covers after installing the slider, but it's difficult and may scratch the surface.



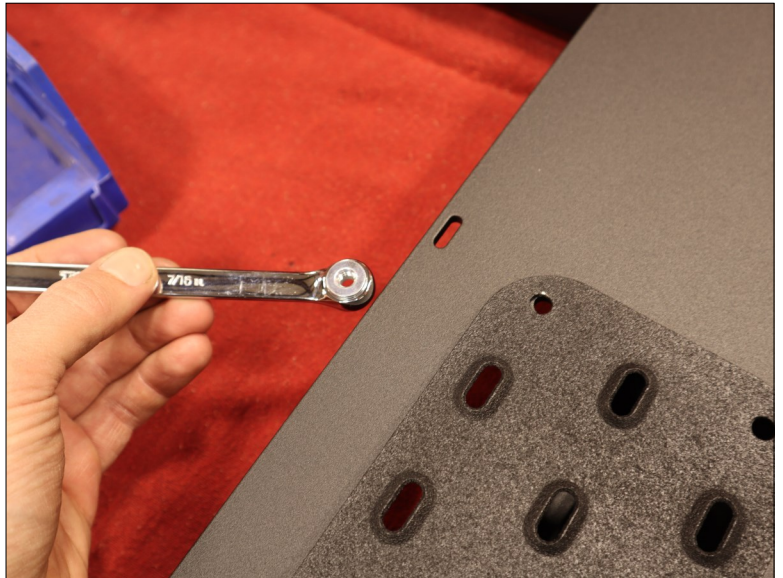
Front Rocker Cover cut detail. (Step 4)

5 Attach the tread plates to both sliders.

Hint: Tighten hardware from the middle of the plate outward.

Hardware:

- (32) 1/4" x 5/8" Button Head Bolt
- (32) 1/4" Nylon Flange Locknut



Attach the tread plates. (Step 5)

6 For vehicles without KDSS, loosely assemble the front legs (Left and right side) of the slider. Attach the front leg support on the inward face of the front leg.

For vehicles with KDSS, assemble only the passenger side front leg.

Hint: Do not fully tighten hardware yet. Don't forget to install the front leg support.

Hardware: front leg and leg support. Total: Left and Right sliders

- (8) 3/8" x 1-1/4" Hex Bolt
- (16) 3/8" USS Washer
- (8) 3/8" Nylon-insert Locknut



Loosely assemble the front leg and support. (Step 6)

7 If installing on a vehicle with KDSS (some 5th gen 4Runner models and GX460), Remove any plastic frame plugs.

Remove the KDSS skid plate found on the crossmember of the GX460. Tuck the slider front leg frame bracket under the KDSS lines and loosely secure in place.

Hint: 4Runners with KDSS do not have a skid plate at this location because the lines route over the frame. The front leg frame bracket must still fit between the lines and the frame. Do not crush or kink the lines.

Hardware:

- (4) M8 x 25mm Flange Bolt
- (4) M8 Fender Washer, Thick

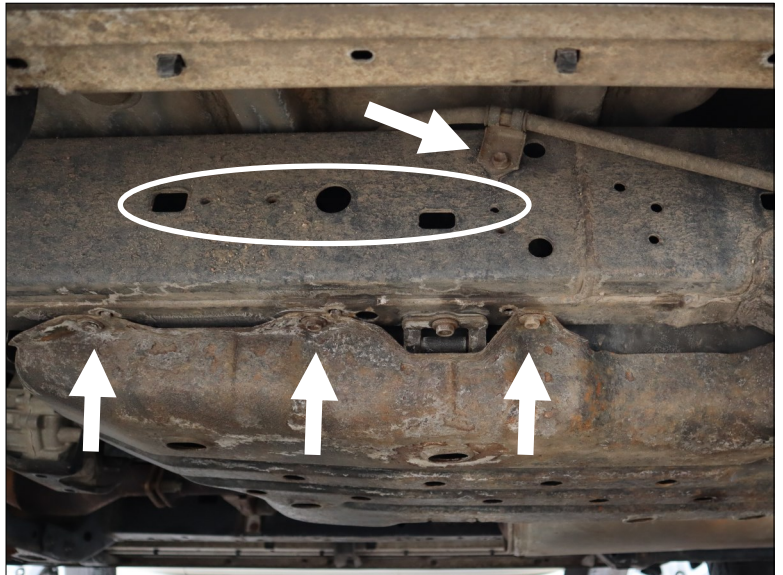


Vehicles w/KDSS: Install the driver frame bracket. (Step 7)

8 Prepare the rear of the frame for slider fitment by removing the hardware for the parking brake retainer clip and the hardware for the fuel tank skid plate. Allow the fuel tank skid plate to hang. Remove the rearmost plastic frame plugs if present.

Repeat for the passenger side frame plugs and brake line routing.

Hint: New hardware for the skid plate and brake line support is included with the SOK1320 kit.



Remove frame plugs, loosen skid plate, and unbolt brake clamp. (#8)

9 If fitting the optional LED slider light (SOK0082,) install them now. Consult the instructions included with the SOK0082 kit.



Fit the optional SOK0082 kit at this time if desired. (Step 9)

10 Attach the rear driver slider mount to the frame, slide it under the KDSS lines if present. Loosely secure it with the hardware while making sure to align the front leg. Do not pinch or crush the KDSS lines.

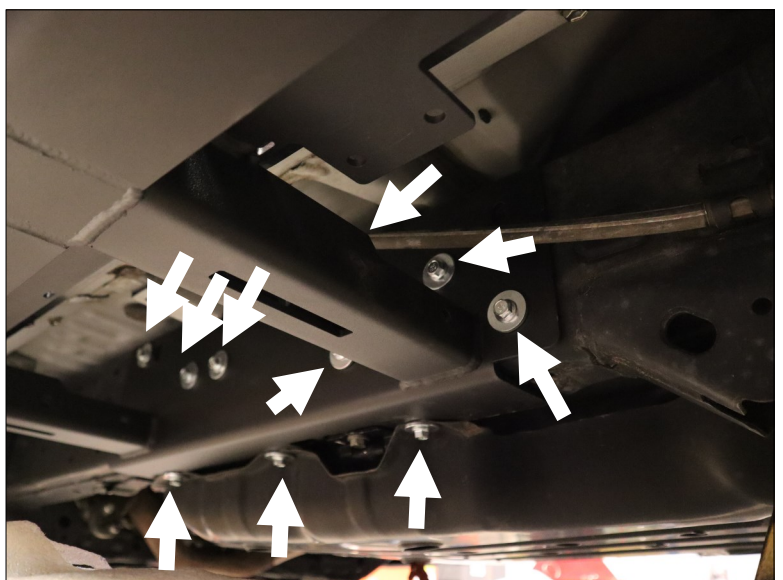
Tighten the bottom hardware first, using new hardware for the fuel tank skid plate. Use a new bolt for the brake line clamp (does not get thick washer).

Hint: Do not yet install the rearmost upper bolt. Do not fully tighten hardware yet.

Hardware:

(10) M8 x 25mm flange bolt

(9) M8 Fender Washer, Thick

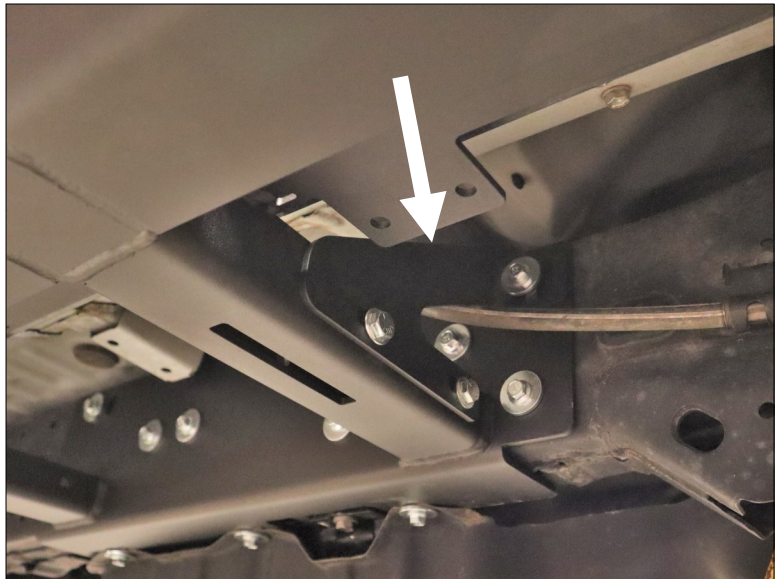


Attach rear of slider. (Step 10)

11 Attach the rear leg support. Route the parking brake cable through the opening as shown.

Hardware:

- (2) 3/8" x 1-1/4" Hex Bolt
- (4) 3/8" USS Washer
- (2) 3/8" Nylon-Insert Locknut
- (1) M8 x 25mm flange bolt
- (1) M8 Fender Washer, Thick



Attach the rear leg support. (Step 11)

12 Note the routing of KDSS lines for the rear frame bracket. Reattach the retainer clips for the KDSS lines after installing the slider.

Take care not to pinch, crush, or kink the KDSS lines during installation.

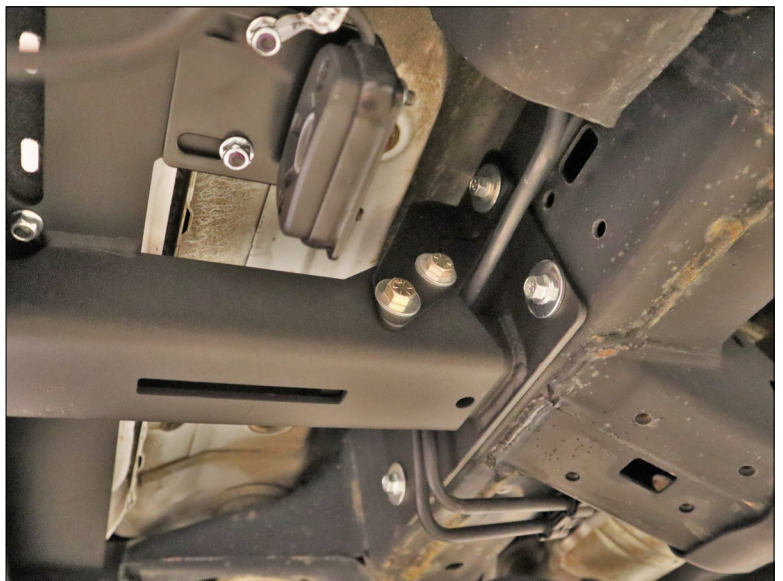


KDSS line routing, if equipped. (Step 12)

13 Attach the front leg to the front leg frame bracket. Install the front leg support. Loosely secure with hardware. If the vehicle is equipped with KDSS, note the routing of the KDSS lines.

Hardware:

See step 6



Attach the front leg and support. (Step 13)

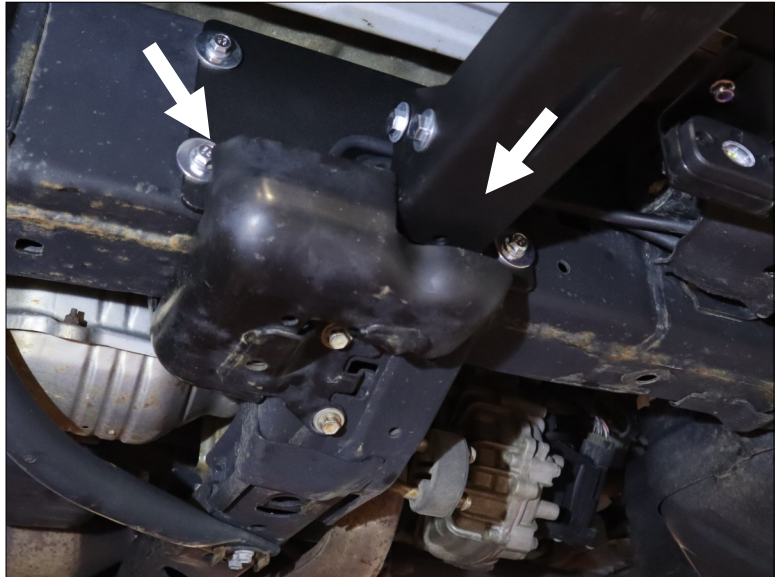
14 Check for level and make any adjustments as needed. Fully tighten all hardware on the driver side.



Level, then secure all hardware. (Step 14)

15 On the GX460, cut the KDSS skid plate to clear the front leg frame bracket where indicated. After cutting, re-install the KDSS skid.

Hint: Use a grinder or cutoff wheel. Break the edges and finish with paint or a rust preventer.



GX460: Cut for clearance and reinstall KDSS skid. (Step 15)

16 Align the passenger side slider and loosely secure it with hardware. Note the single bolt in the underside of the frame rail, as shown with arrows. Use a new bolt for the brake line clamp (does not get thick washer).

Hint: On some newer models (1) M8 bolt, directly above the rearmost leg, is omitted due to lack of threads.

Hardware, including front leg brkt to frame:

(12) M8 x 25 flange bolt

(8) M8 Fender Washer, Thick



Loosely attach passenger side slider. (Step 16)

17 Remove the (2) plastic plugs on the inside of the passenger side frame rail.

Hint: Use a small pry tool or a flat bladed screwdriver.



Remove the two plastic plugs. (Step 18)

18 Shape the two sticknuts to fit to each hole in the bottom of the frame. Use the round hole to access the rear hardware location. Use the rectangular hole to access the front hardware location.

Hint: Sticknuts can be easily bent and shaped to help locate a nut inside the frame. You can verify alignment visually or by directing the nut with a pick tool.

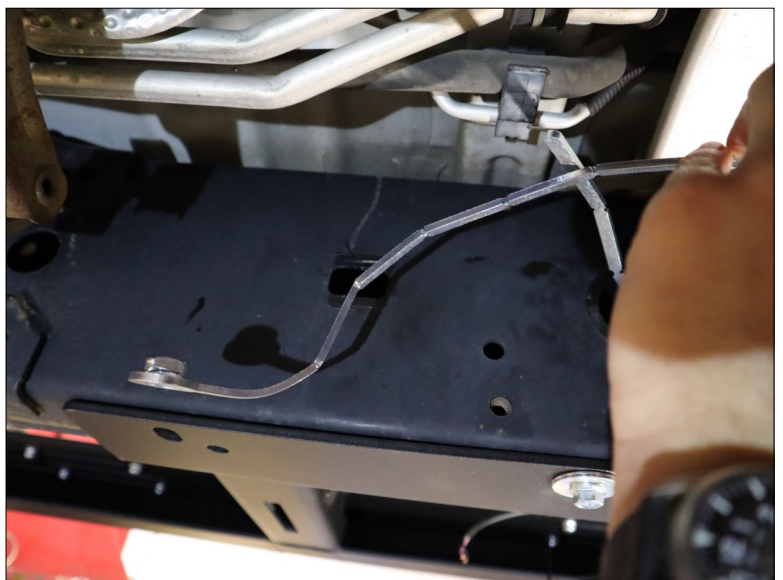
If you chose to cut the tails of the sticknuts, be sure to leave enough length to handle the nut, should it need to be removed or reinstalled in the future.

Hardware:

- (2) 3/8" Sticknut
- (2) 3/8" x 1-1/2" Hex Bolt
- (2) 3/8" Fender Washer. Thick
- (2) 3/8" Lock Washer



Shape a sticknut to fit the hole location. Secure with a bolt. (Step 18)

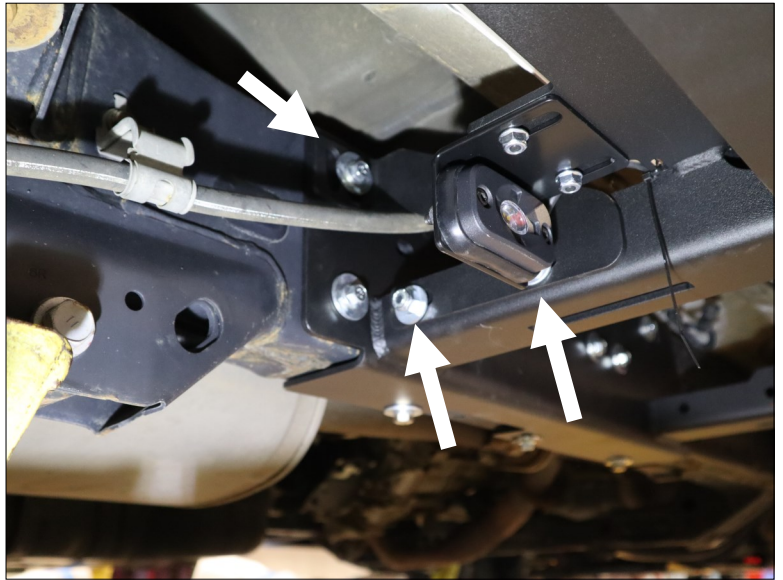


Shape a sticknut to fit the hole location. Secure with a bolt. (Step 18)

19 Install the rear passenger side leg support. Route the brake cable through the opening.

Hardware:

- (2) 3/8" x 1-1/4" Hex Bolt
- (4) 3/8" USS Washer
- (2) 3/8" Nylon-Insert locknut
- (1) M8 x 25mm Flange Bolt
- (1) M8 Fender Washer, Thick



Install rear passenger leg support. (Step 19)

20 Tighten the hardware in the bottom of the frame rail first. Check for level and make any adjustments if needed, then tighten the remaining hardware in the frame rail. Tighten the hardware in the legs.

Double check that all hardware is installed and tight.



Tighten all hardware. (Step 20)

This completes the installation of SliderSteps on your 5th Gen 4Runner or GX460.



Installation complete.