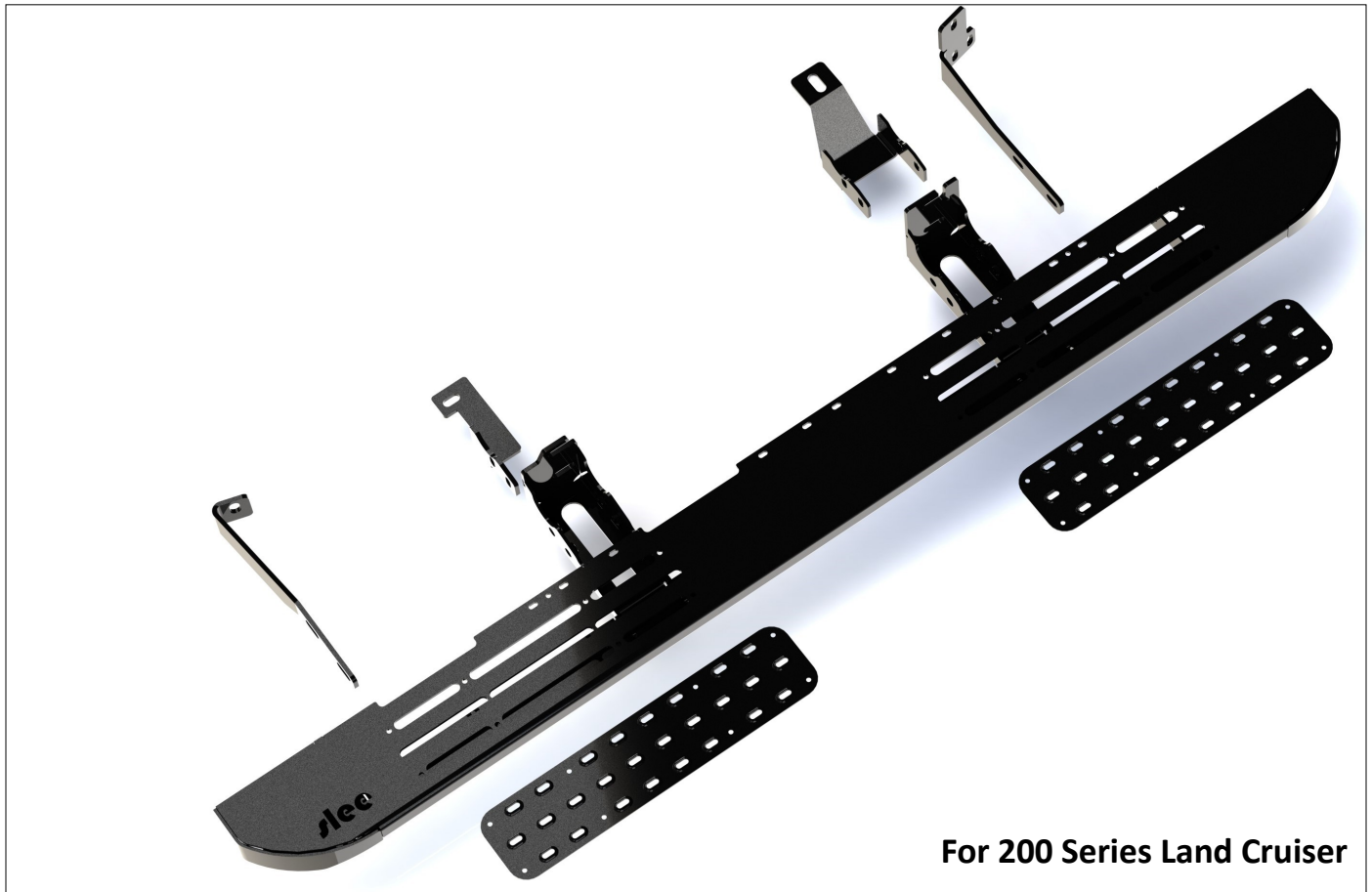




700 Pine Ridge Road Golden CO 80403 Tel (303) 278 8287 1(888) 4X4 SLEE Fax (303) 278 7182

Slee Off-Road – [Fit Kit: SOK1329 to 200 Land Cruiser] (SOK2005) – Installation instruction 1



Thank you for your purchase from Slee Off-Road! If you should you have any questions or concerns, please do not hesitate to contact us immediately at 1 888 4X4 SLEE or at sales@sleeoffroad.com.

Slee Off-Road strives to provide comprehensive installation instructions. However, in some circumstances minor inconsistencies may be encountered with instructions and or provided parts. If you encounter such an inconsistency, please notify us, as your input is important.

Slee Off-Road guarantees all parts free from defects for one year from the original purchase date. Slee Off-Road and Slee & Co under no circumstances will be held liable for any damages or injuries to the users of this product(s) and or their equipment as a result of the use of this information or parts obtained from Slee Off Road.

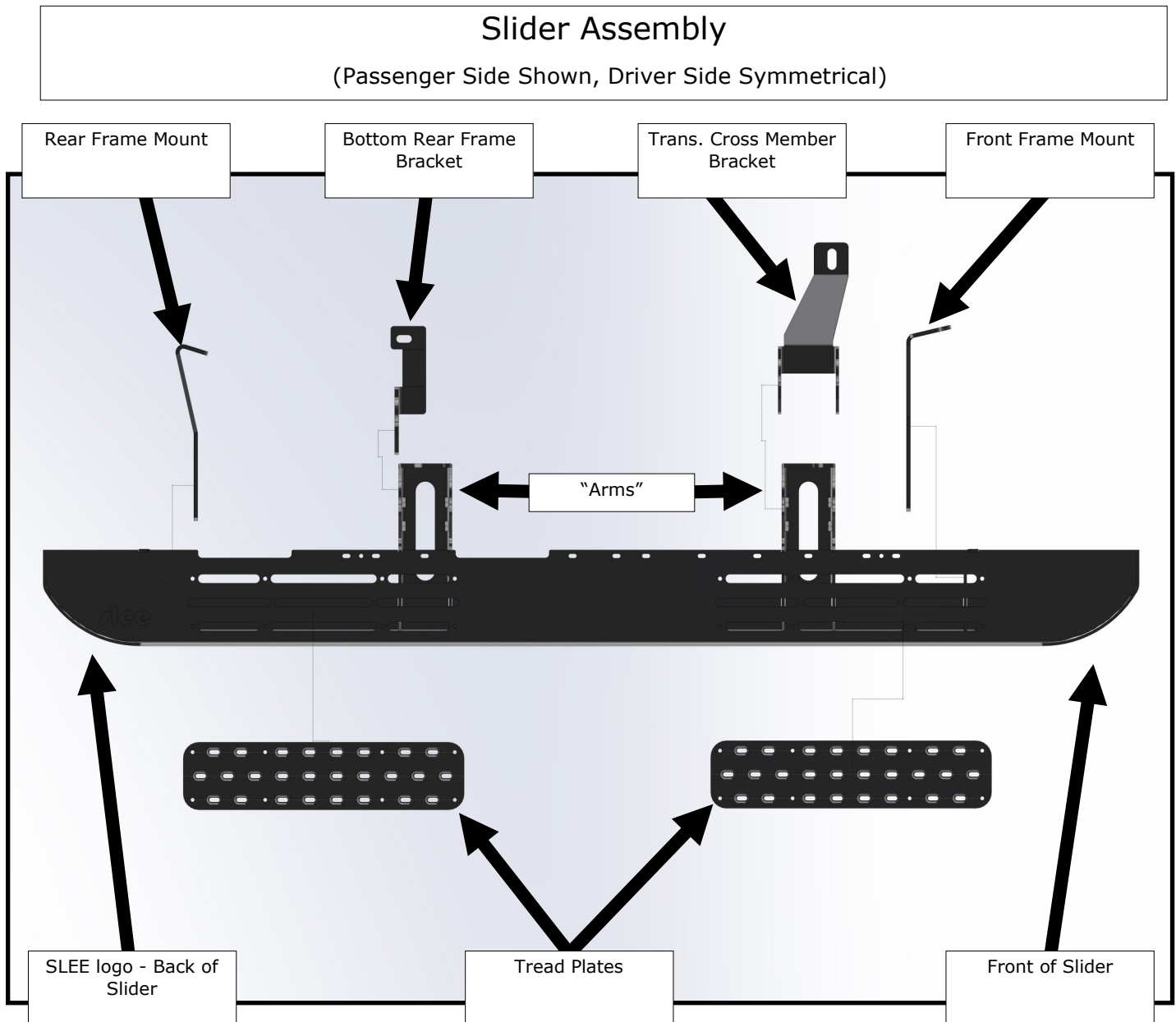
Slee Off-Road – [Fit Kit: SOK1329 to 200 Land Cruiser] (SOK2005) – Installation instruction 2

QTY	Parts Included
7	3/8" Stick Nut Plate, 12"
10	M8 x 1.25 Rivet Nut (2 spare)
7	3/8"-16 x 1-1/4" Hex Bolt
7	3/8" Fender Washer, Thick
7	3/8" Lock Washer
4	3/8" Push Nut
QTY	Parts Not Included with SOK2005 But Required for Installation
1	SOK1329—LX570 Formed SliderSteps and Hardware Kit

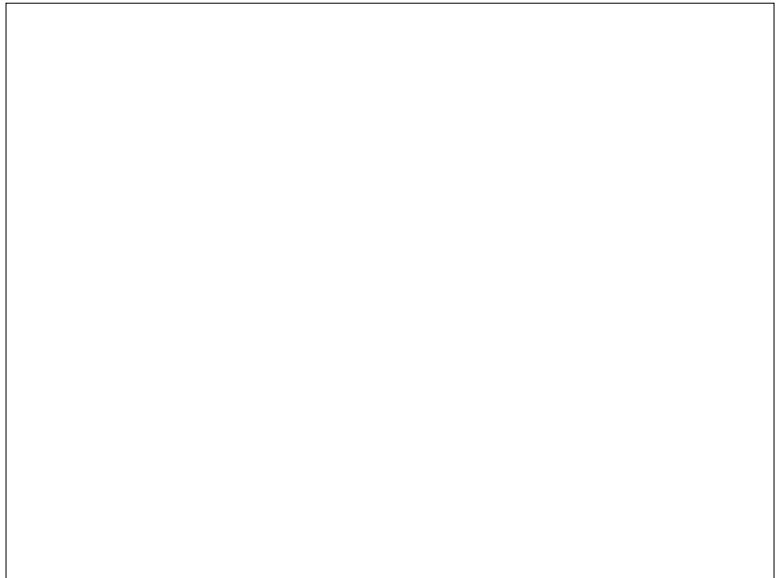
Tools Required
Metric Tools
12mm Swivel or U-Joint Socket
SAE Tools
9/16" Swivel or U-Joint Socket
17/32" Drill Bit (STF1112)
Drill
M8 Rivet Nut Tool (STF1112)
Pry bar or flathead screw driver

NOTE: These instructions are intended to fit the SOK1329 Formed SliderSteps to the 2008-2021 200 Series Land Cruiser. These instructions use hardware from both the SOK1329 (slider) and SOK2005 (hardware) kits. If installing the SOK1329 (slider) to your Land Cruiser, discard the instructions included with the SOK1329 (slider.)

These instructions do not apply to the 2008-2021 LX570. For LX570 installations, consult the instructions included with the SOK1329 Formed SliderSteps.



1 Organize the work area. Make sure all parts for the kit are present.



Organize the work area. (Step 1)

2 Using the driver side front frame mount as a template, mark the location to drill a hole for a rivet nut.

Hint: Use a center punch to help center the drill bit.



Mark driver side frame for hole. (Step 2)

3 Using the images on the next page as a guide and using the sliders as a template if needed, mark selected holes to be drilled for rivet nuts. Mark selected plastic frame plugs for removal.

Drill out the marked locations with the 17/32" bit. Remove the indicated frame plugs and discard them.

Hint: Plastic frame plugs can be removed with a flathead screw driver or a pry bar.

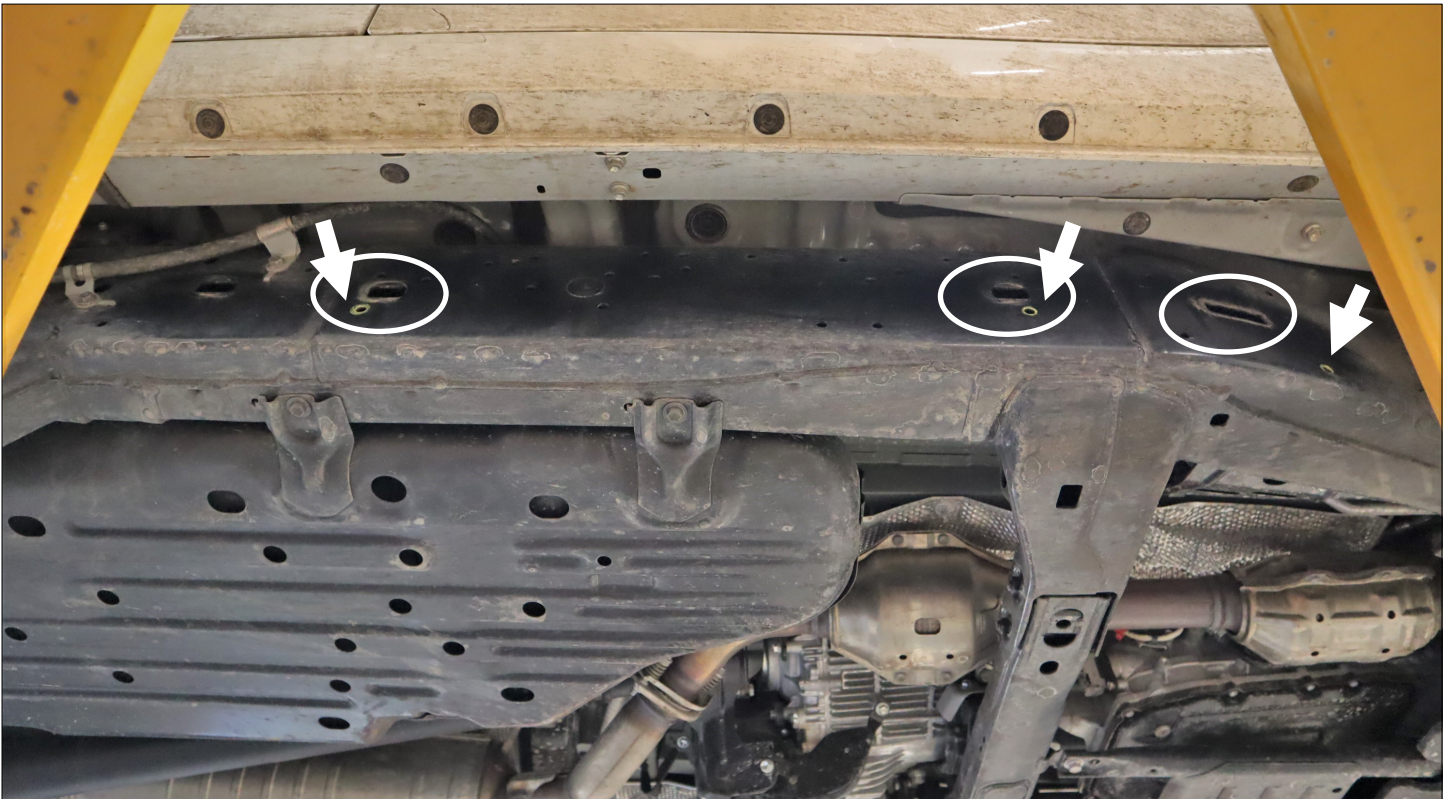
Optionally paint the drilled areas to reduce corrosion.



Mark and drill select holes. (Step 3)



Install (5) rivet nuts into the driver side frame rail as indicated by arrows. Remove the (3) plastic frame plugs circled.



Install (3) rivet nuts into the passenger side frame rail as indicated by arrows. Remove the (3) plastic frame plugs circled.

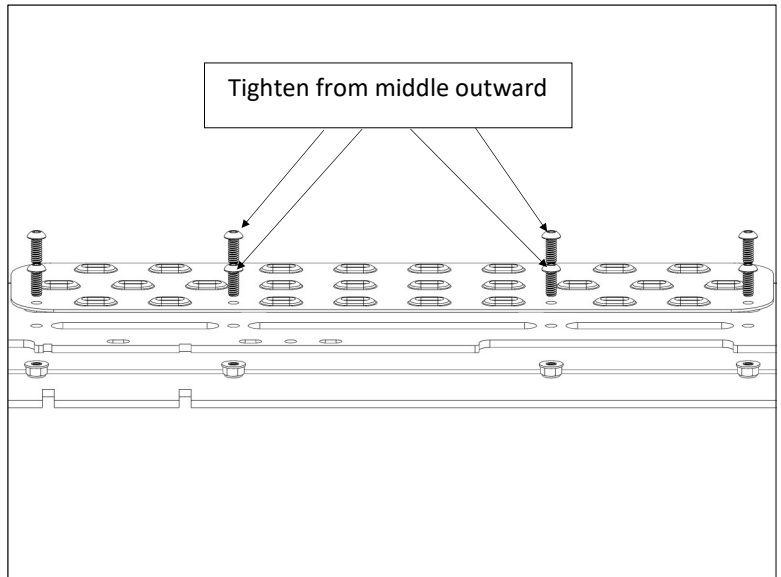
4 Assemble the sliders for installation by attaching the tread plates.

Hint: Start with the middle bolts and work outwards.

Hardware:

(32) 1/4-20 Button Head Screws

(32) 1/4-20 Nylock nuts



Attach the tread plates. (Step 4)

5 Loosely install the front and rear mounting brackets onto the sliders. These parts bolt into the inside faces of the slider.

Hint: Loosely attach to allow adjustment later.

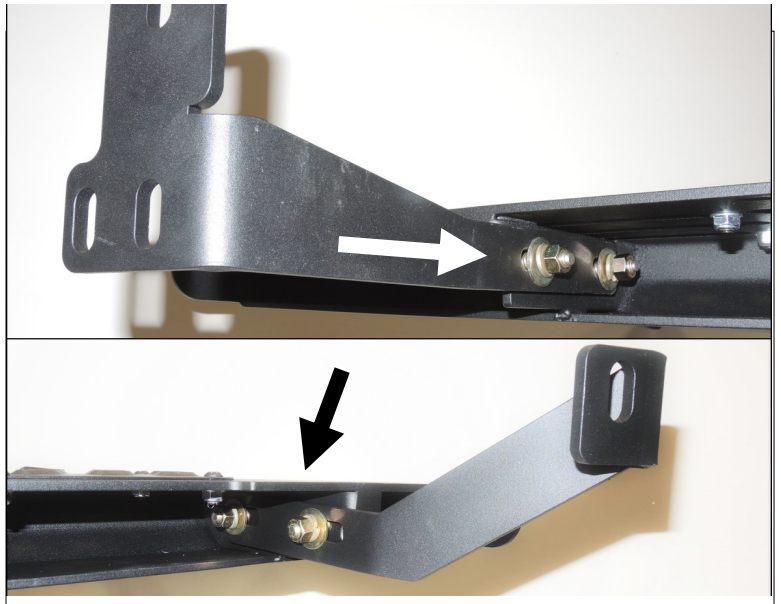
Hardware:

(8) 3/8" x 1-1/4" Bolt

(16) 3/8" Washer

(8) 3/8" Lock Washer

(8) 3/8" Nut



Attach the front and rear mounting brackets. (Step 5)

6 Loosely install the bottom rear frame bracket and the transmission cross member bracket. These parts also bolt to the "arms" of the slider.

Hint: Loosely attach to allow adjustment later.

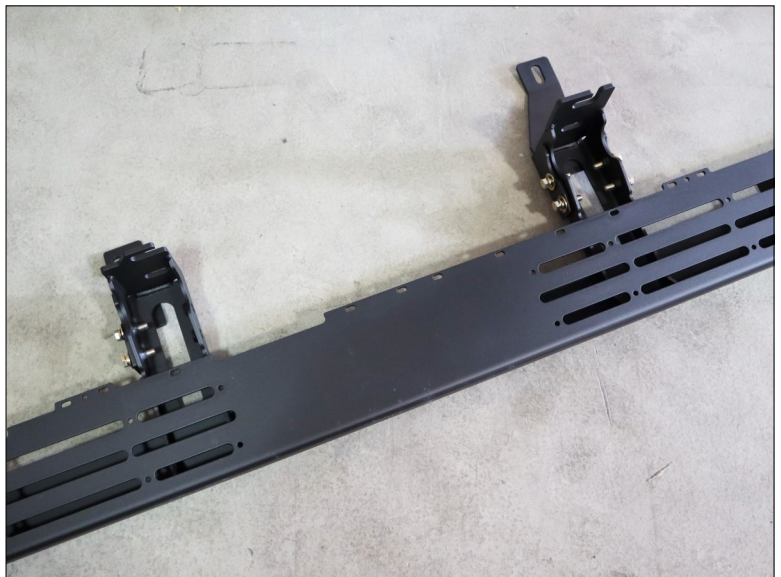
Hardware:

(6) 3/8" x 1-1/4" Bolt

(12) 3/8" Washer

(6) 3/8" Lock Washer

(6) 3/8" Nut



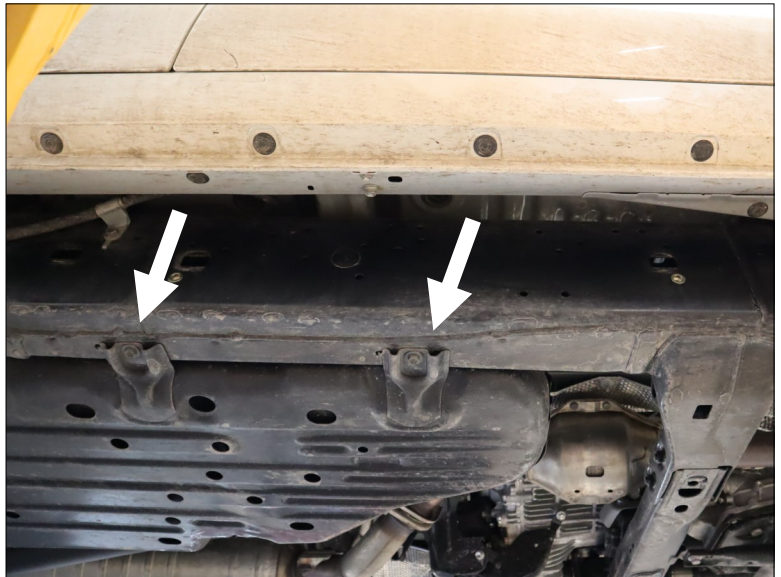
Attach the bottom frame and trans. crossmember brackets. Passenger side shown with larger, (4) bolt bracket towards front crossmember. Driver side symmetrical. (Step 6)

7 If fitting the optional LED slider light (SOK0082,) install them now. Consult the instructions included with the SOK0082 kit.



Fit the optional SOK0082 kit at this time if desired. (Step 7)

8 Remove the (2) bolts holding the factory fuel tank skid. Allow the skid to self-support (hang) until the sliders are installed.



Remove the frame hardware for the fuel skid. (Step 8)

9 Assemble (4) of the 3/8" bolts as shown in preparation for the next step.

Hint: The push nut is not required but makes future steps much easier.

Hardware:

- (4) 3/8" x 1-1/4" Bolt
- (4) 3/8" Lock Washer
- (4) 3/8" Thick Washer
- (4) 3/8" Push Nut



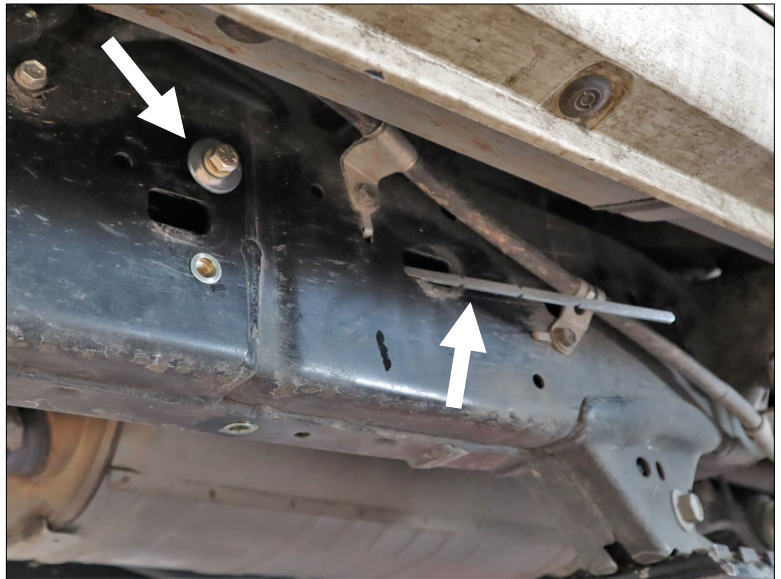
Install the rear driver side stick nut. (Step 9)

10 Loosely install a stick nut and the matching hardware from Step 9 into the rear of the driver side frame rail. Fish the stick nut through the access hole and shape it as needed.

Hint: Bend and shape the stick nut as needed to fit the location. Leave the tail attached for now.

Hardware:

(1) 3/8" Stick Nut



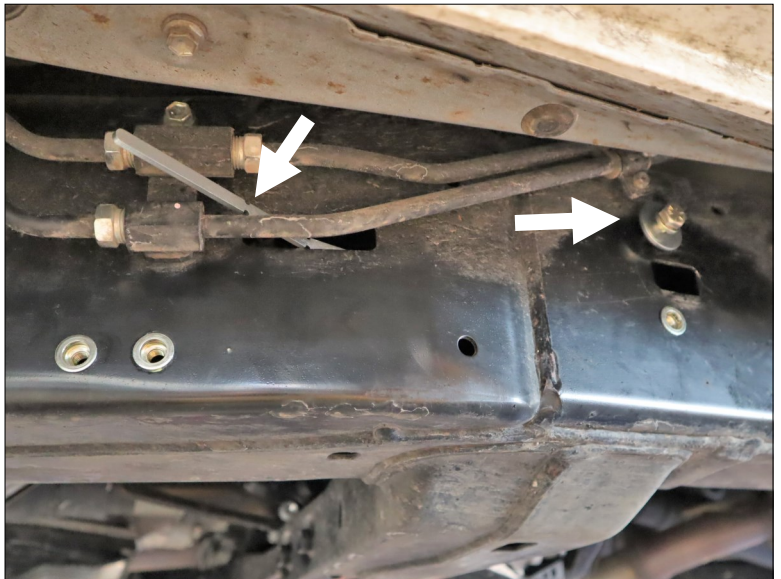
Install the rear driver side stick nut. (Step 10)

11 Loosely install a stick nut and the matching hardware with large flat washer into the front of the driver side frame rail. Fish the stick nut through the access hole and shape it as needed.

Hint: Bend and shape the stick nut as needed to fit the location. Leave the tail attached for now.

Hardware:

(1) 3/8" Stick Nut



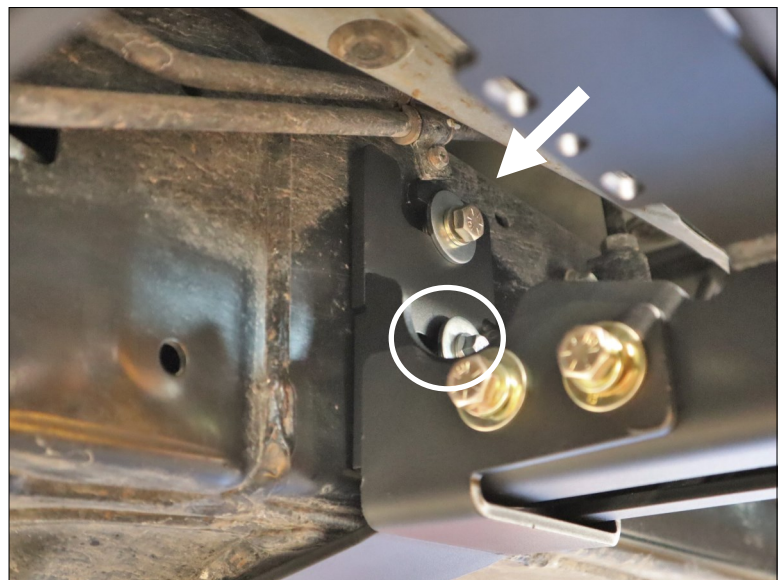
Install the front driver stick nut. (Step 11)

12 Take the assembled driver side slider and hang it onto the hardware installed in steps 9 and 10 (shown by arrow.) Use the slotted tabs to hold the slider to the frame rail. Secure in place with hardware threaded into the rivet nuts (shown with circle.)

Hardware:

(2) M8 x 30mm Flange Bolt

(2) M8 Fender Washer, Thick



Use slotted tabs to hold the slider. Secure with add'l hardware. (12)

13 Install the hardware for the front frame mount.

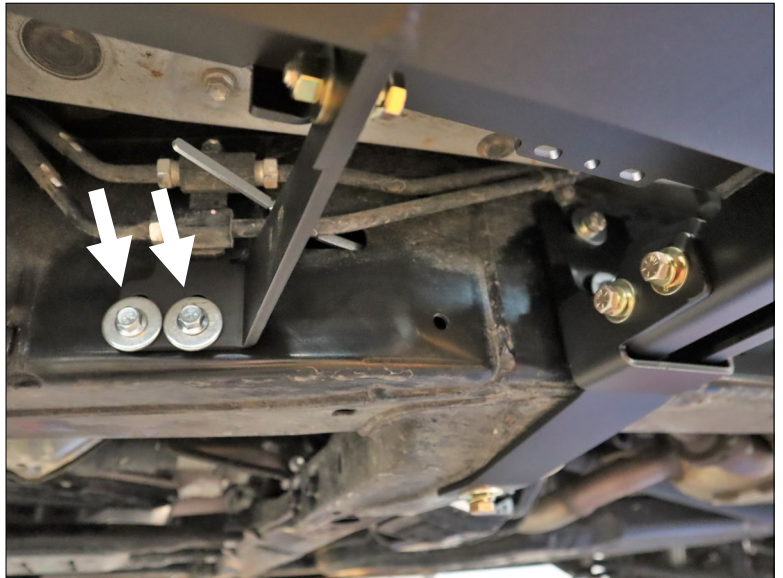
Hint: Use only the bottom two holes on the driver side. Use one bottom and one top hole for the passenger side.

Hardware, Driver Side:

- (2) M8 x 30mm Flange Bolt
- (2) M8 Fender Washer, Thick

Hardware, Passenger Side:

- (1) 3/8" Stick Nut
- (1) 3/8 x 1-1/4" Hex Head Bolt
- (1) 3/8" Fender Washer, Thick
- (1) 3/8" Lock Washer
- (1) M8 x 30mm Flange Bolt
- (1) M8 Fender Washer, Thick

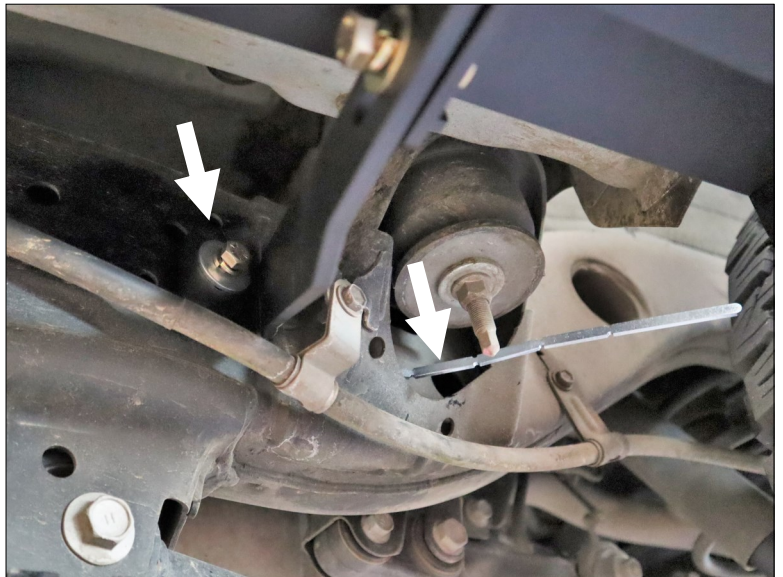


Install the front mount hardware. (Step 13)

14 Install the rear frame mount hardware.

Hardware:

- (1) 3/8" Stick Nut
- (1) 3/8 x 1-1/4" Hex Bolt
- (1) 3/8" Lock Washer
- (1) 3/8" Fender Washer, Thick



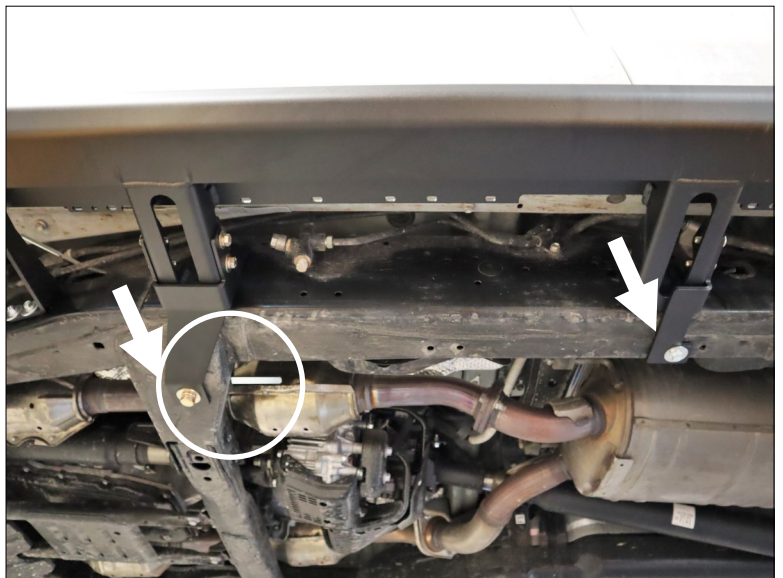
Install the rear mount hardware. (Step 14)

15 Install the hardware for the under-side of the rear and crossmember frame brackets. Fit the Z-Nut into the opening of the crossmember (shown with circle) and secure with hardware.

Hint: Z-Nuts are side-specific. The passenger side rear bracket fits between the fuel tank skid and frame rail as shown on the next page.

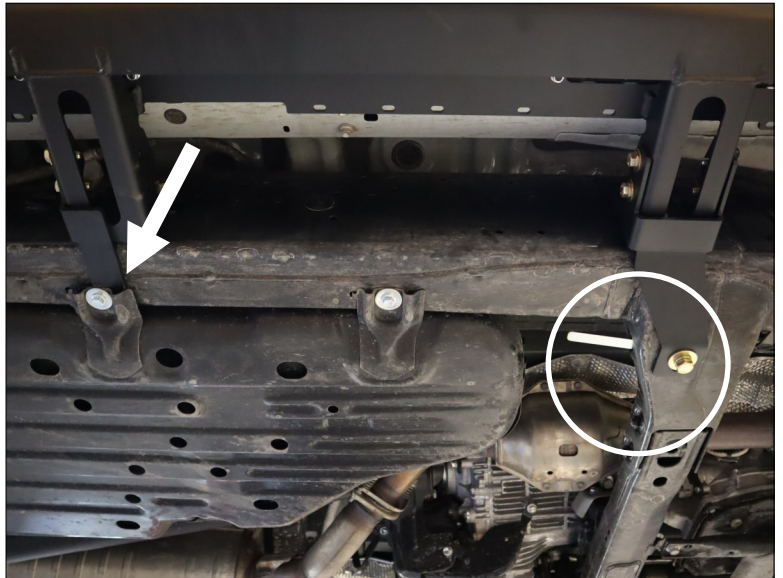
Hardware:

- (1) 1/2" Z-Nut
- (1) 1/2" x 1-1/2" Hex Bolt
- (1) 1/2" Lock Washer
- (1) 1/2" Washer
- (1) M8 x 30mm Flange Head Bolt
- (1) M8 Fender Washer, Thick



Fit the Z-Nut and center bracket hardware. (Step 15)

16 Repeat Steps 10-14 for the passenger side of the vehicle. The primary exceptions on the passenger side are that the bottom rear frame bracket must go under the fuel tank skid plate tab as shown and that the front bracket mounting is different, as detailed in step 13.



Slider bracket mounts under the skid plate tab. (Step 15/16)

17 After fitting the sliders, check for level and even (front/rear) placement. Firmly secure and tighten all hardware.

Wobble sockets with extensions are highly recommended to reach the upper frame bolts.

Hint: Clip the tails of the sticknuts after tightening all hardware. Leave enough length to service the hardware should you need to tighten or loosen them in the future.

The Z-nut plates can be left intact.



Front passenger bracket with sticknut and bolt. (Step 13/16)

This completes the installation of the SOK1329 Formed SliderSteps onto the 200 Series Land Cruiser.



Installation Complete.